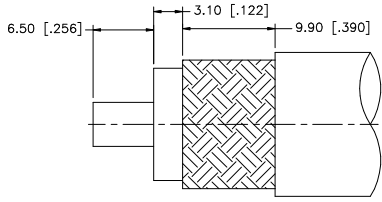
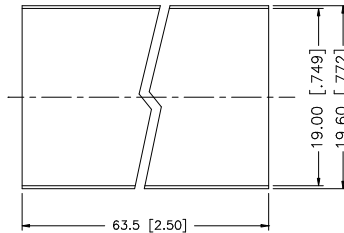
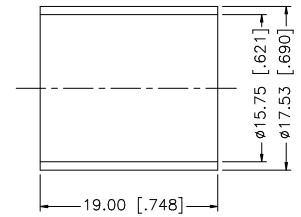
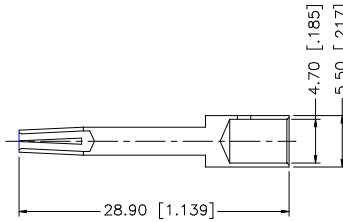
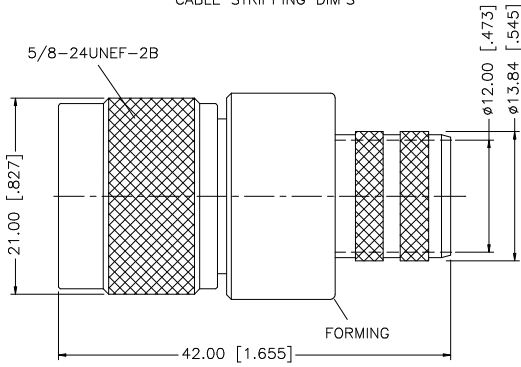


REV.	DATE	DESCRIPTION
NC	11/23/98	INITIAL RELEASE
A	02/19/07	UPDATE DRAWING FORMAT



RECOMMENDED
CABLE STRIPPING DIM'S



NOTE:
1. CONSULT AMPHENOL CONNEX FOR CRIMP TOOL INFORMATION.

DESCRIPTION	MATERIAL	FINISH	QTY	DO NOT SCALE DRAWING	APPROVALS	DATE	Amphenol Connex					
8					DRAWN	G.R.S.	02/19/07	N CRIMP PLUG – REVERSE POLARIZED (LMR 600 CABLE)				
7					CHECKED		PART DESCRIPTION					
6					ISSUED		PART NO.					
5	HEAT SHRINK		1		SHEET	1 OF 1	172206RP					
4	FERRULE	COPPER	NEXCOTE	1	CAD FILE	C:/172/172206RP.DWG	DWG. NO. 172206RP.DWG					
3	CONTACT PIN	BRASS	GOLD	1			REV.	A	SIZE	A	SCALE	NA
2	INSULATOR	TEFLON	NATURAL	1								
1	BODY	BRASS	NEXCOTE	1								

UNLESS OTHERWISE SPECIFIED DIMENSIONS ARE IN MILLIMETERS. DIMENSIONS IN [] ARE IN INCHES AND FOR CUSTOMER REFERENCE ONLY.

UNLESS OTHERWISE SPECIFIED TOLERANCES FOR MILLIMETERS ARE:
0.5 – 8mm ± 0.20mm
8 – 30mm ± 0.40mm
30 – 120mm ± 0.50mm

UNLESS OTHERWISE SPECIFIED TOLERANCES FOR INCHES ARE:
.020 – .315 = ± 0.007"
.315 – 1.180 = ± 0.015"
1.180 – 4.724 = ± 0.020"