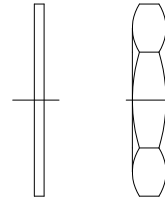
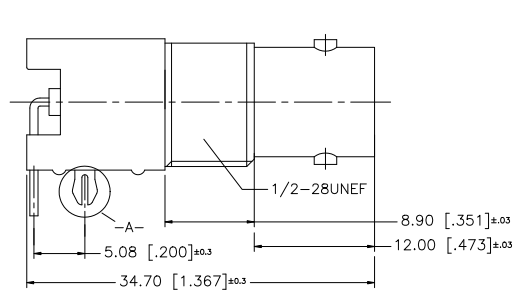
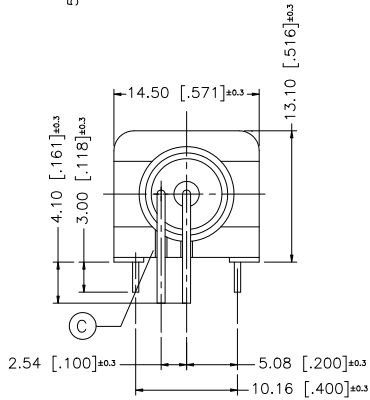
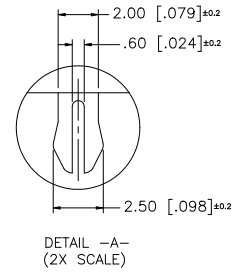
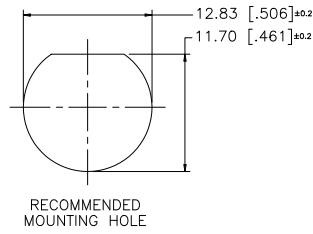
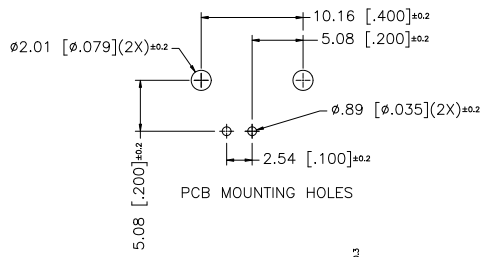


REV.	DATE	DESCRIPTION
A	02/12/04	UPDATE DRAWING FORMAT/ MODIFY BODY
B	07/28/06	REVISE BODY HIEGHT TO 13.10
C	06/28/07	REVISE BACK HOUSING SHOWING BACK CONTACT PINS CAPTIVATED.



NOTE:
1. MAX. PANEL THICKNESS = 5mm

DESCRIPTION	MATERIAL	FINISH	QTY	UNLESS OTHERWISE SPECIFIED DIMENSIONS ARE IN MILLIMETERS; DIMENSIONS IN [] ARE IN INCHES AND FOR CUSTOMER REFERENCE ONLY.	APPROVALS	DATE	<h1 style="color: blue;">Amphenol Connex</h1>
8							
7	HEX NUT	BRASS	NICKEL	1			BNC R/A PC MOUNT RECEPT. JACK
6	LOCK WASHER	S50C	NICKEL	1	UNLESS OTHERWISE SPECIFIED TOLERANCES FOR MILLIMETERS ARE: 0.5 - 8mm ± 0.20mm 8 - 30mm ± 0.40mm 30 - 120mm ± 0.50mm	DRAWN G.R.S. 06/28/07	
5	MOUNTING POST	BRASS	TIN PLATE	1	UNLESS OTHERWISE SPECIFIED TOLERANCES FOR INCHES ARE: .020 - .315 = ± 0.007" .315 - 1.180 = ± 0.015" 1.180 - 4.724 = ± 0.020"	CHECKED	112419
4	CONTACT PIN	PHOS. BRONZE	GOLD	1	DO NOT SCALE DRAWING	ISSUED	
3	INSULATOR	P.P.	NATURAL	1		SHEET 1 OF 1	REV. C
2	BODY	ZINC DIE CAST	NICKEL	1		CAD FILE C:/112/112419.DWG	SIZE A
1	HOUSING	P.B.T.	WHITE	1			SCALE NA