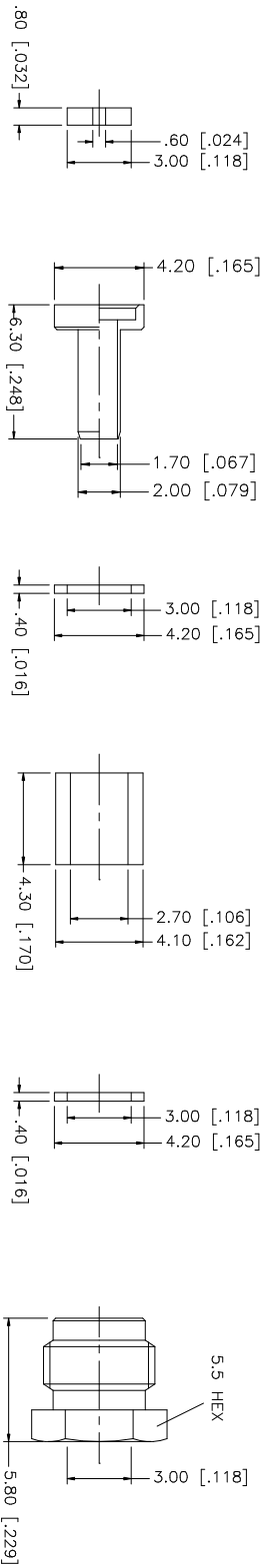
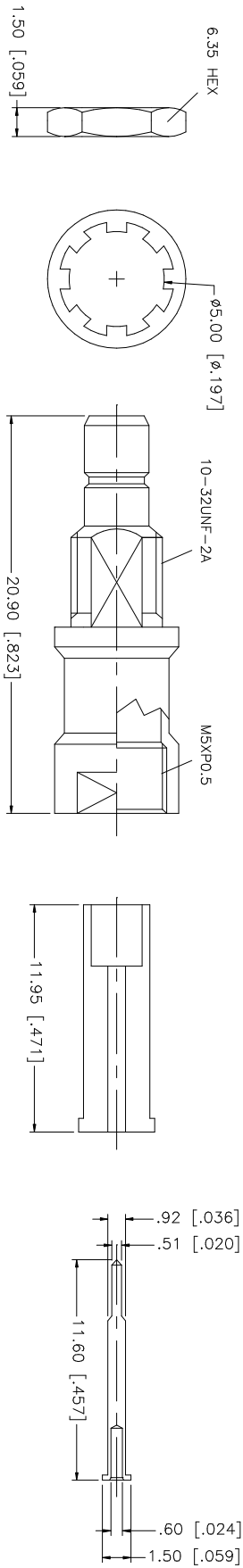
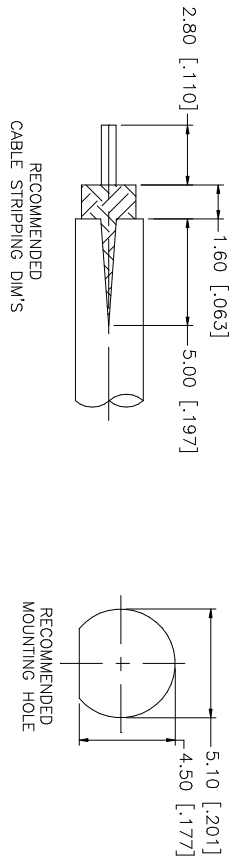


REV.	DATE	DESCRIPTION
NC	08/07/06	INITIAL RELEASE



QTY	FINISH	MATERIAL	DESCRIPTION
1	GOLD	BRASS	HEX NUT
1	GOLD	BRASS	LOOK WASHER
1	GOLD	BRASS	HEX NUT
1	RED	SILICONE	GASKET
2	GOLD	BRASS	WASHER
1	GOLD	COPPER	TOP HAT
1	GOLD	BRASS	CONTACT PIN
2	NATURAL	TEFLON	INSULATOR
1	GOLD	BRASS	BODY
			DESCRIPTION

UNLESS OTHERWISE SPECIFIED DIMENSIONS ARE IN MILLIMETERS DIMENSIONS IN PARENTHESES ARE IN INCHES AND FOR SUBSTITUTED MATERIALS ONLY.	UNLESS OTHERWISE SPECIFIED TOLERANCES FOR MILLIMETERS ARE:	UNLESS OTHERWISE SPECIFIED TOLERANCES FOR INCHES ARE:
0.5 - 8mm ± 0.20mm	0.5 - 8mm ± 0.20mm	.020 - .315 = ± 0.007"
8 - 30mm ± 0.40mm	8 - 30mm ± 0.40mm	.315 - 1.180 = ± 0.015"
30 - 120mm ± 0.50mm	30 - 120mm ± 0.50mm	1.180 - 4.724 = ± 0.020"

APPROVALS	DATE
DRAWN G.R.S.	08/07/06
CHECKED	
ISSUED	
SHEET 1 OF 1	

CAO FILE	DWG. NO.	REV.	NC	SIZE	SCALE
C:/142/142126.DWG	142126.DWG	NC		A	NA

PART DESCRIPTION	PART NO.
<b>Amphenol Connex</b> SMB BULKHEAD CLAMP JACK (FOR RG-174/U, 316/U CABLE)	142126