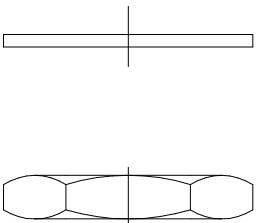
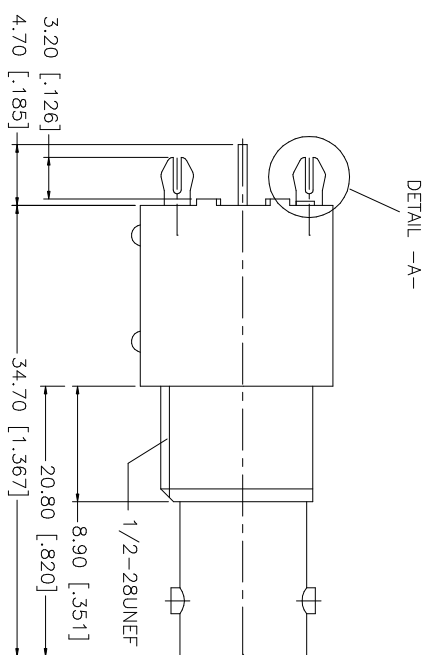
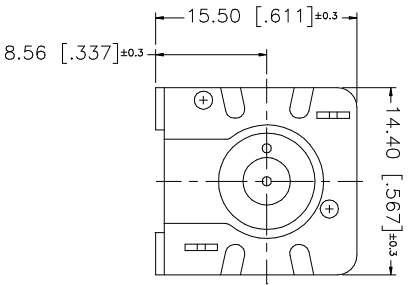
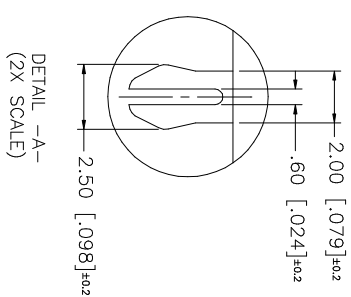
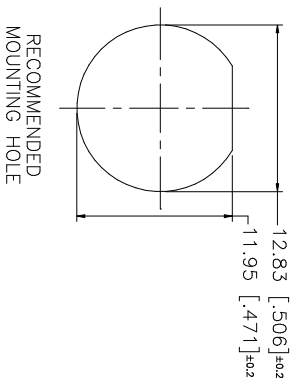
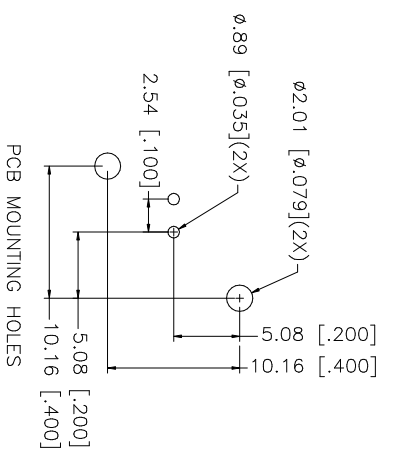


REV.	DATE	DESCRIPTION
A	02/24/04	UPDATE DRAWING FORMAT/MODIFY MOUNT POSTS



NOTE:
1. MAX. PANEL THICKNESS = 5mm

QTY	FINISH	MATERIAL	DESCRIPTION
1	NICKEL	BRASS	HEX NUT
1	NICKEL	S50C	LOCK WASHER
1	NICKEL	BRASS	MOUNTING POST
1	GOLD	PHOS. BRONZE	CONTACT PIN
1	NATURAL	P.P.	INSULATOR
1	NICKEL	ZINC DIECAST	BODY
1	BLACK	P.P.	HOUSING
			DESCRIPTION

APPROVALS	DATE
G.R.S.	02/24/04

UNLESS OTHERWISE SPECIFIED DIMENSIONS ARE IN INCHES AND FOR CUSTOMER REFERENCE ONLY.
UNLESS OTHERWISE SPECIFIED TOLERANCES FOR MILLIMETERS ARE: 0.5 - 8mm ± 0.20mm 8 - 30mm ± 0.40mm 30 - 120mm ± 0.50mm
UNLESS OTHERWISE SPECIFIED TOLERANCES FOR INCHES ARE: .020 - .315 = ± 0.007" .315 - 1.180 = ± 0.015" 1.180 - 4.724 = ± 0.020"

CAD FILE	DWG. NO.	REV.	SIZE	SCALE
C:/112/112411.DWG	112411.DWG	A	A	NA

PART NO.	PART DESCRIPTION
112411	BNC STRAIGHT PC MOUNT RECEIPT JACK

APPROVALS	DATE
G.R.S.	02/24/04

Amphenol Connex

BNC STRAIGHT PC MOUNT RECEIPT JACK