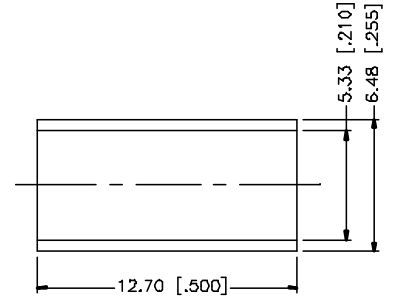
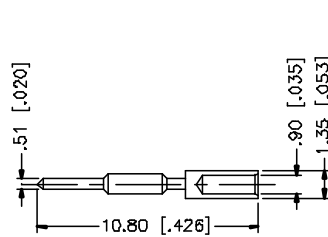
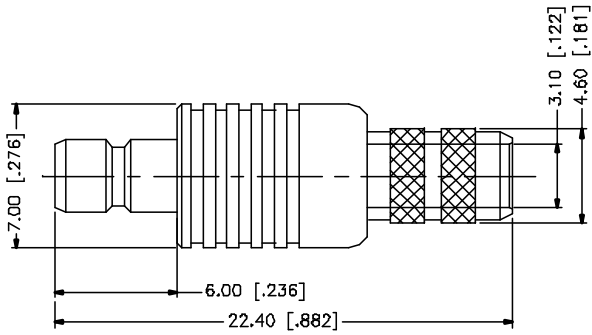
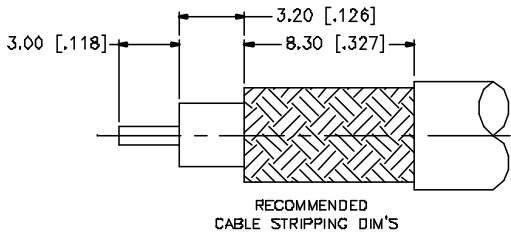


REV.	DATE	DESCRIPTION
NC	04/03/05	INITIAL RELEASE



REV.	DATE	DESCRIPTION
NC	04/03/05	INITIAL RELEASE
8		
7		
6		
5		
4	FERRULE	COPPER GOLD 1
3	CONTACT PIN	BRASS GOLD 1
2	INSULATOR	TEFLON NATURAL 1
1	BODY	BRASS GOLD 1
	DESCRIPTION	MATERIAL FINISH QTY

UNLESS OTHERWISE SPECIFIED DIMENSIONS ARE IN MILLIMETERS DIMENSIONS IN [] ARE IN INCHES AND FOR CUSTOMER REFERENCE ONLY.		APPROVALS	DATE
UNLESS OTHERWISE SPECIFIED TOLERANCES FOR MILLIMETERS ARE: 0.5 - 30mm ± 0.20mm 30 - 120mm ± 0.40mm UNLESS OTHERWISE SPECIFIED TOLERANCES FOR INCHES ARE: .020 - .315 = ± 0.007" .315 - 1.180 = ± 0.015" 1.180 - 4.724 = ± 0.020"			
DO NOT SCALE DRAWING		DRAWN G.R.S. CHECKED ISSUED SHEET 1 OF 1	04/03/05
		Amphenol Connex PART DESCRIPTION SMB CRIMP JACK (RG-58/U, 58B/U CABLE)	
		PART NO. 142330	
		CAD FILE C:/142/142330.DWG	DWF. NO. 142330.DWG
		REV. NC	SIZE A
		SCALE NA	