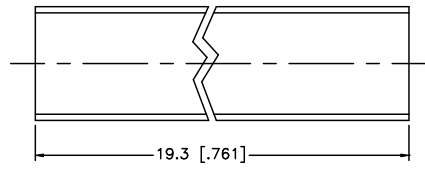
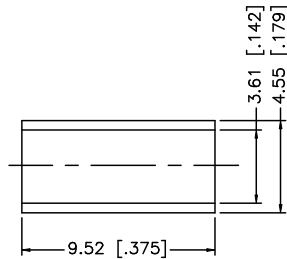
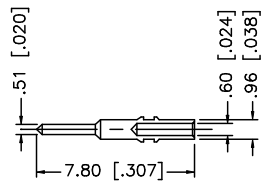
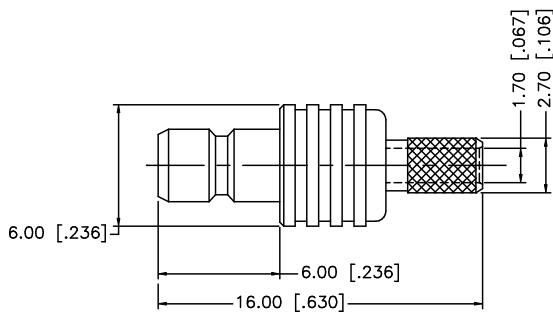
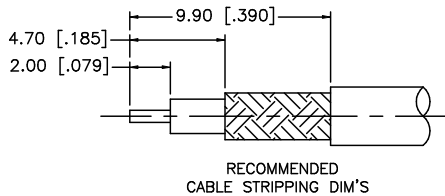


REV.	DATE	DESCRIPTION
A	01/07/99	ADD CRIMP NOTES/ CHANGE FERRULE DIMS
B	05/08/07	REVISE BARREL, FERRULE DIMENSIONS, ADD CRIMP NOTES



NOTE:
 1. CRIMPED FERRULE HEX CRIMP SIZE .151"
 2. CRIMPED CONTACT PIN SQ. CRIMP SIZE 0.7mm

DESCRIPTION	MATERIAL	FINISH	QTY	UNLESS OTHERWISE SPECIFIED DIMENSIONS ARE IN MILLIMETERS. DIMENSIONS IN [] ARE IN INCHES AND FOR CUSTOMER REFERENCE ONLY.	APPROVALS	DATE	Amphenol Connex							
8				UNLESS OTHERWISE SPECIFIED TOLERANCES FOR MILLIMETERS ARE: 0.5 - 8mm ± 0.20mm 8 - 30mm ± 0.40mm 30 - 120mm ± 0.50mm UNLESS OTHERWISE SPECIFIED TOLERANCES FOR INCHES ARE: .020 - .315 = ± 0.007" .315 - 1.180 = ± 0.015" 1.180 - 4.724 = ± 0.020"	DRAWN	G.R.S.	05/08/07	SMB CRIMP JACK (FOR RG-316U/D CABLE)						
7					CHECKED									
6					ISSUED									
5	HEAT SHRINK TUBE		1		SHEET	1 OF 1		PART NO. 142182						
4	FERRULE	COPPER	NICKEL		1	CAD FILE	C:/142/142182.DWG	DWG. NO.	142182.DWG	REV	B	SIZE	A	SCALE
3	CONTACT PIN	BRASS	GOLD	1										
2	INSULATOR	TEFLON	NATURAL	1										
1	BODY	BRASS	NICKEL	1										
				DO NOT SCALE DRAWING										