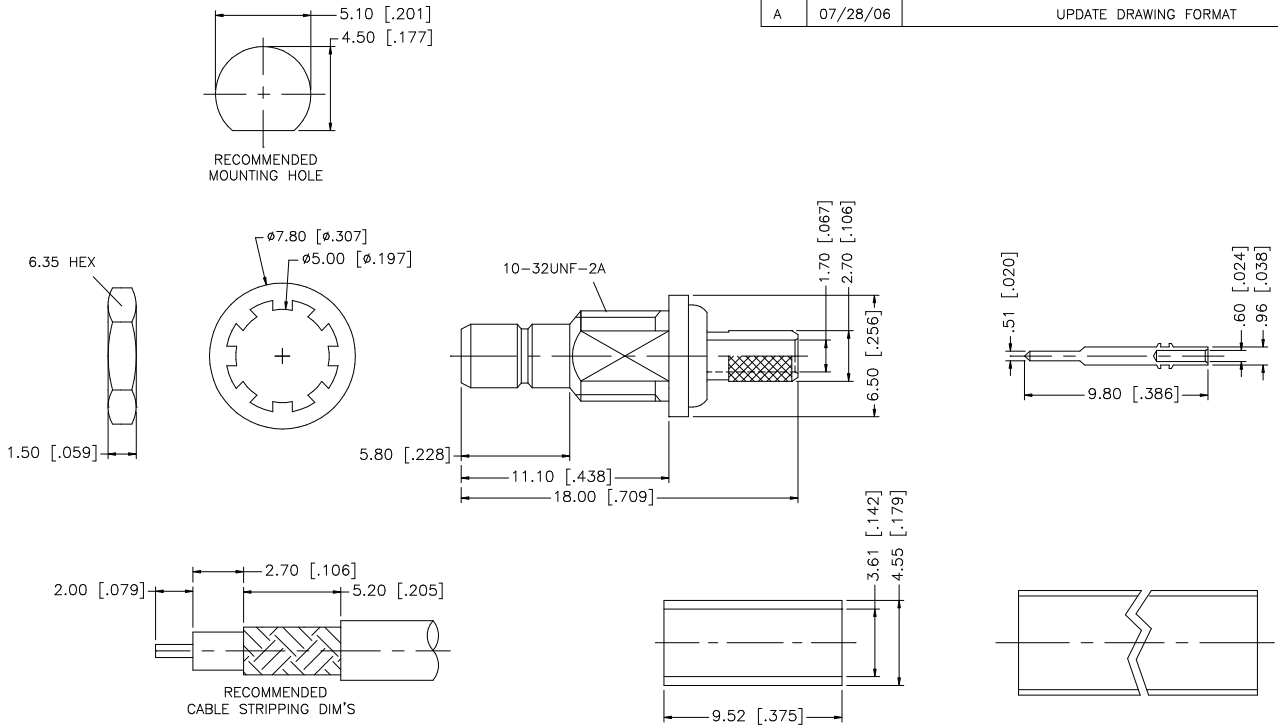


REV.	DATE	DESCRIPTION
NC	01/25/99	INITIAL RELEASE
A	07/28/06	UPDATE DRAWING FORMAT



DESCRIPTION	MATERIAL	FINISH	QTY	UNLESS OTHERWISE SPECIFIED DIMENSIONS ARE IN MILLIMETERS; DIMENSIONS IN ( ) ARE IN INCHES AND FOR CUSTOMER REFERENCE ONLY.	APPROVALS	DATE	PART DESCRIPTION
8							
7	HEAT SHRINK TUBE		1		DRAWN G.R.S.	07/28/06	
6	FERRULE	COPPER	NICKEL	1	UNLESS OTHERWISE SPECIFIED TOLERANCES FOR MILLIMETERS ARE: 0.5 - 8mm ± 0.20mm 8 - 30mm ± 0.40mm 30 - 120mm ± 0.50mm		SMB BULKHEAD CRIMP JACK (FOR RG-316U/D CABLE)
5	HEX NUT	BRASS	NICKEL	1	UNLESS OTHERWISE SPECIFIED TOLERANCES FOR INCHES ARE: .020 - .315 = ± 0.007" .315 - 1.180 = ± 0.015" 1.180 - 4.724 = ± 0.020"		
4	LOCK WASHER	BRASS	NICKEL	1			PART NO. <b>142180</b>
3	CONTACT PIN	BRASS	GOLD	1			
2	INSULATOR	TEFLON	NATURAL	1			DWG. NO. 142180.DWG
1	BODY	BRASS	NICKEL	1			
				DO NOT SCALE DRAWING	CAD FILE C:/142/142180.DWG		REV. A
							SIZE A
							SCALE NA