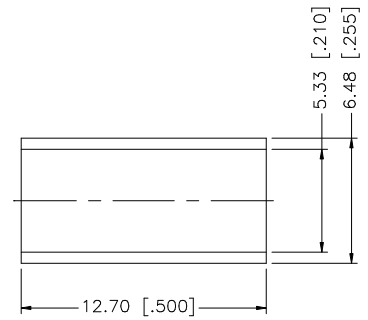
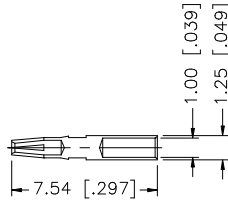
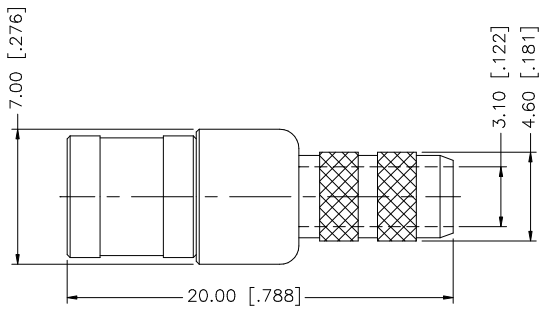
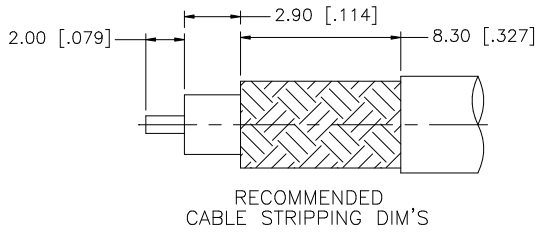


REV.	DATE	DESCRIPTION
NC	11/08/99	INITIAL RELEASE
A	10/01/06	UPDATE DRAWING FORMAT



NOTE:
1. CRIMPED FERRULE HEX CRIMP SIZE .213"

				UNLESS OTHERWISE SPECIFIED DIMENSIONS ARE IN MILLIMETERS. DIMENSIONS IN [] ARE IN INCHES AND FOR CUSTOMER REFERENCE ONLY.	APPROVALS	DATE	Amphenol Connex						
8					DRAWN	G.R.S.	10/01/06	PART DESCRIPTION SMB CRIMP PLUG (FOR RG-58/U CABLE)					
7					CHECKED								
6					ISSUED								
5					SHEET	1 OF 1							
4	FERRULE	COPPER	NICKEL	1				PART NO. 142254					
3	CONTACT PIN	BER. COPPER	GOLD	1				DWG. NO. 142254.DWG					
2	INSULATOR	TEFLON	NATURAL	1				REV.	A	SIZE	A	SCALE	NA
1	BODY	BRASS	NICKEL	1									
DESCRIPTION				MATERIAL	FINISH	QTY							
				UNLESS OTHERWISE SPECIFIED TOLERANCES FOR MILLIMETERS ARE: 0.5 - 8mm ± 0.20mm 8 - 30mm ± 0.40mm 30 - 120mm ± 0.50mm			DO NOT SCALE DRAWING						
				UNLESS OTHERWISE SPECIFIED TOLERANCES FOR INCHES ARE: .020 - .315 = ± 0.007" .315 - 1.180 = ± 0.015" 1.180 - 4.724 = ± 0.020"			CAD FILE C:/142/142254.DWG						