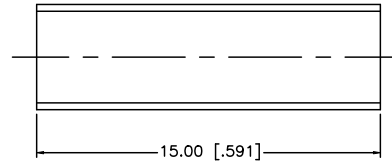
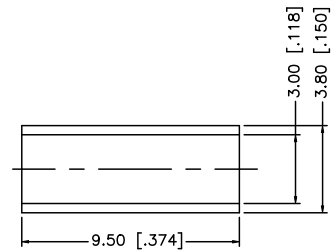
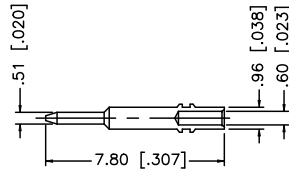
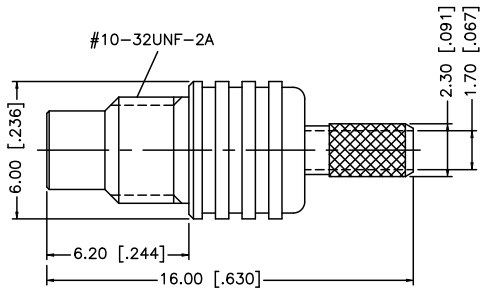
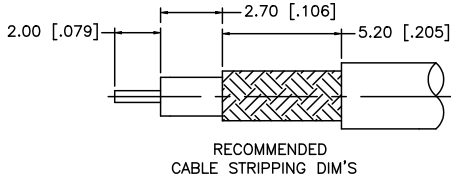


REV.	DATE	ECR NO.	DESCRIPTION
NC	03/22/06	-	INITIAL RELEASE
A	09/17/08	-	REVISE PART TO 152102 SPECS.



NOTE:

1. CRIMPED FERRULE HEX CRIMP SIZE .128" [3.25]
2. CRIMPED CONTACT PIN SQ. CRIMP SIZE .027" [0.70]

				UNLESS OTHERWISE SPECIFIED DIMENSIONS ARE IN MILLIMETERS. DIMENSIONS IN [] ARE IN INCHES AND FOR CUSTOMER REFERENCE ONLY.	APPROVALS	DATE	Amphenol Connex		
8					DRAWN	GRS		09/17/08	
7					CHECKED				
6					ISSUED				
5	HEAT SHRINK TUBING				SHEET	1 OF 1			
4	FERRULE	COPPER	BLACK	A/R	PART DESCRIPTION				
3	CONTACT PIN	BRASS	GOLD	1	SMC CRIMP JACK (FOR RG-174/U, 188A/U, 316/U CABLE)				
2	INSULATOR	PTFE	NATURAL	1	PART NO.				
1	BODY	BRASS	GOLD	1	152103				
DESCRIPTION				MATERIAL	FINISH	QTY	DWG. NO.	152103.DWG	
							REV. NC	SIZE A	SCALE NA

UNLESS OTHERWISE SPECIFIED DIMENSIONS ARE IN MILLIMETERS. DIMENSIONS IN [] ARE IN INCHES AND FOR CUSTOMER REFERENCE ONLY.

UNLESS OTHERWISE SPECIFIED TOLERANCES FOR MILLIMETERS ARE:
0.5 - 8mm ± 0.20mm
8 - 30mm ± 0.40mm
30 - 120mm ± 0.50mm

UNLESS OTHERWISE SPECIFIED TOLERANCES FOR INCHES ARE:
.020 - .315 = ± 0.007"
.315 - 1.180 = ± 0.015"
1.180 - 4.724 = ± 0.020"

DO NOT SCALE DRAWING

CAD FILE
C:/152/152103.DWG

Amphenol Connex

SMC CRIMP JACK
(FOR RG-174/U, 188A/U, 316/U CABLE)

152103

152103.DWG REV. NC SIZE A SCALE NA