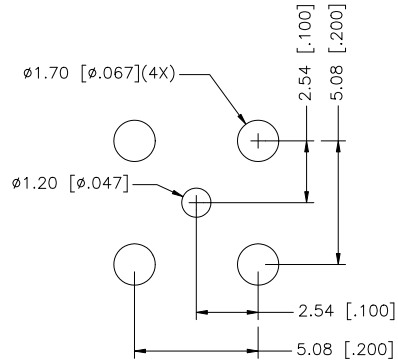
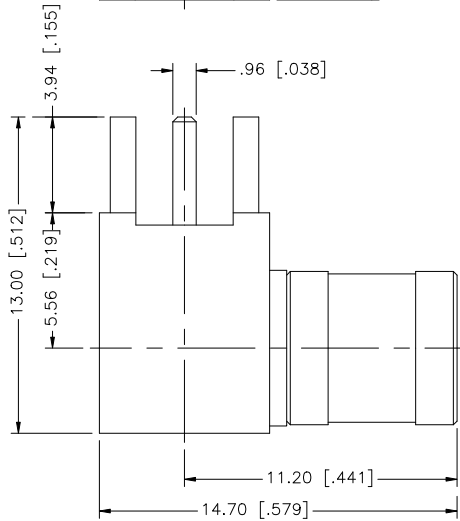
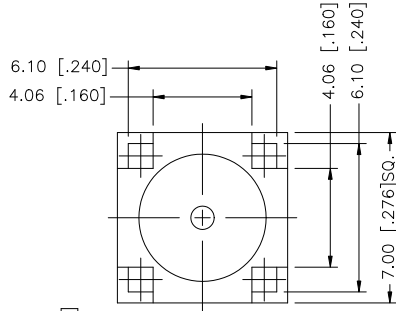


REV.	DATE	DESCRIPTION
NC	09/19/07	INITIAL RELEASE



8						UNLESS OTHERWISE SPECIFIED DIMENSIONS ARE IN MILLIMETERS; DIMENSIONS IN [] ARE IN INCHES AND FOR CUSTOMER REFERENCE ONLY. UNLESS OTHERWISE SPECIFIED TOLERANCES FOR MILLIMETERS ARE: 0.5 - 8mm ± 0.20mm 8 - 30mm ± 0.40mm 30 - 120mm ± 0.50mm UNLESS OTHERWISE SPECIFIED TOLERANCES FOR INCHES ARE: .020 - .315 = ± 0.007" .315 - 1.180 = ± 0.015" 1.180 - 4.724 = ± 0.020"	APPROVALS	DATE	<h1 style="color: blue; margin: 0;">Amphenol Connex</h1>	
7							DRAWN	G.R.S.		09/19/07
6							CHECKED			MINI 75 OHM SMB R/A P.C. MOUNT PLUG
5							ISSUED			
4							SHEET	1 OF 1		
3	CONTACT PIN	BER. COPPER	GOLD	1			CAD FILE	C:/142/142142-75.DWG		PART NO.
2	INSULATOR	TEFLON	NATURAL	1						142142-75
1	BODY	BRASS	GOLD	1						DWG. NO.
	DESCRIPTION	MATERIAL	FINISH	QTY	DO NOT SCALE DRAWING					142142-75.DWG
									REV.	NC
									SIZE	A
									SCALE	NA