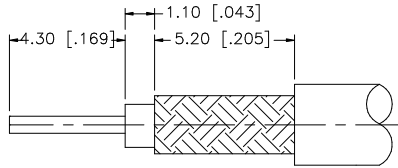
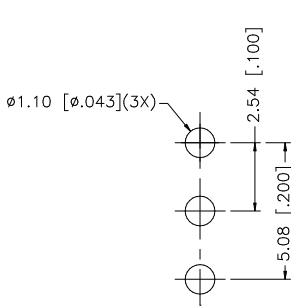


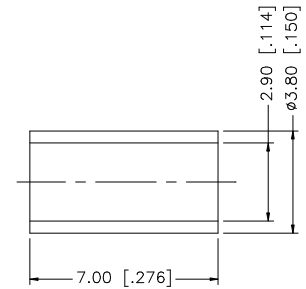
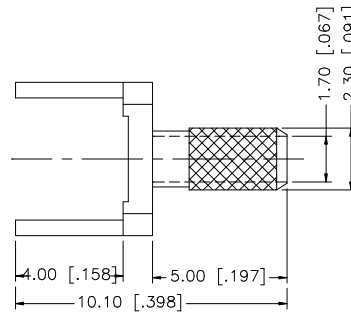
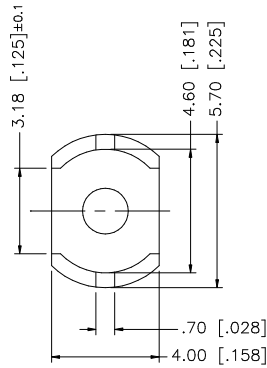
REV.	DATE	DESCRIPTION
A	03/08/05	UPDATE DRAWING FORMAT/ ADD 3.18 DIMENSION
B	12/16/06	REVISE DRAWING DESCRIPTION



RECOMMENDED
CABLE STRIPPING DIMS



RECOMMENDED
MOUNTING HOLE



NOTE:

1. CRIMPED FERRULE
HEX CRIMP SIZE 3.25 [.128"]

					UNLESS OTHERWISE SPECIFIED DIMENSIONS ARE IN MILLIMETERS. DIMENSIONS IN [] ARE IN INCHES AND FOR CUSTOMER REFERENCE ONLY. UNLESS OTHERWISE SPECIFIED TOLERANCES FOR MILLIMETERS ARE: 0.5 – 8mm ± 0.20mm 8 – 30mm ± 0.40mm 30 – 120mm ± 0.50mm UNLESS OTHERWISE SPECIFIED TOLERANCES FOR INCHES ARE: .020 – .315 = ± 0.007” .315 – 1.180 = ± 0.015” 1.180 – 4.724 = ± 0.020” DO NOT SCALE DRAWING	APPROVALS		DATE		Amphenol Connex												
8						DRAWN	G.R.S.	12/16/06														
7						CHECKED																
6										PART DESCRIPTION		SMB TERMINATOR (FOR 316/U, 179/U CABLE)										
5										ISSUED												
4																						
3										SHEET 1 OF 1		PART NO.		142256								
2	FERRULE	COPPER	GOLD	1							CAD FILE		DWG. NO.		142256.DWG		REV.	B	SIZE	A	SCALE	NA
1	BODY	BRASS	GOLD	1							C:/142/142256.DWG											

Amphenol Connex

SMB TERMINATOR
(FOR 316/U, 179/U CABLE)

142256

142256.DWG

REV. B

SIZE A

SCALE NA