

NOTES:

1. MATERIALS OF CONSTRUCTION:

- BODY = BRASS, NICKEL PLATED (.000200 MIN THICK)
- CONTACT PIN = PHOSPHOR BRONZE, BRIGHT TIN PLATE (.000250 MIN THICK)
- BRACKET = PHOSPHOR BRONZE OR C.R.S., BRIGHT TIN PLATE (.000180 MIN THICK)
- INSULATORS (2) = POLYPROPYLENE HOMOPOLYMER (BASELL INC., PRO-FAX 6331 or EQUIVALENT), COLOR: BLUE (PANTONE 801C, Delta E: ±3%)

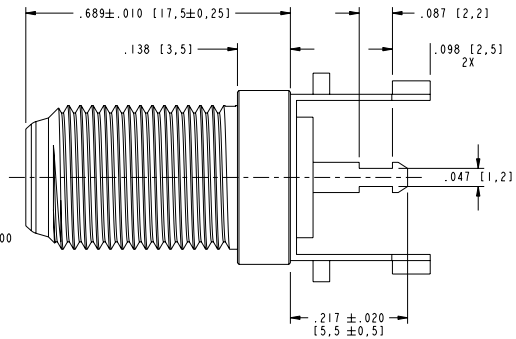
2. ELECTRICAL:

- A. IMPEDANCE MATCH: REAL (R) = 75 ± 10 OHMS
IMAGINARY (X) = ± 45 OHMS
(WHEN TESTED ON ETC TEST BOARD #107303)
- B. FREQUENCY RANGE: 900 TO 2150 MHz
- C. RETURN LOSS (VSWR): -10 dB (1.92) MAX.
- D. D.W.V.: 1200 VRMS FOR 60 SECONDS, MIN.
- E. INSULATION RESISTANCE: 500 MEG OHMS
- F. CONTACT RESISTANCE: 20 mOHMS MAXIMUM

3. PHYSICAL & MECHANICAL:

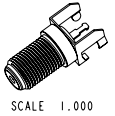
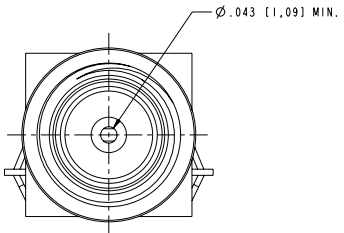
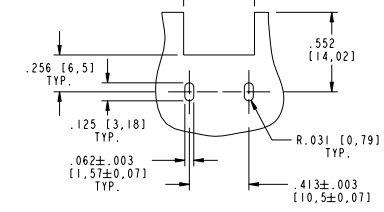
- A. DURABILITY: 100 CYCLES MINIMUM
- B. PIN RANGE: Ø .022 TO .042 TO A DEPTH OF .380" MINIMUM PER IPS-SP-400
- C. INSERTION FORCE: 100 gm - 500 gm
- D. WITHDRAWAL FORCE: 30 gm - 130 gm
- E. MATING TORQUE: 15 IN-LBS. MAXIMUM
- F. BODY TO BRACKET RETENTION: AXIAL = 60 LBS MINIMUM
RADIAL = 15 IN-LBS MINIMUM
40° TO +60° C.
- G. CONTINUOUS OPERATING TEMPERATURE: +170°C FOR 30 SECONDS
+200°C FOR 5 SECONDS
- H. SHORT DURATION TEMPERATURE:
- I. FLAMMABILITY RATING: UL94-HB

531-40144		REVISIONS			
DRAWING NO.	REV	DESCRIPTION	DATE	ECO	APPR
THIRD ANGLE PROJ.	A	RELEASE TO MFG.	6/11/03	44481	BCG
	B	A) ADDED: "TO A DEPTH OF .380" MINIMUM" TO NOTE 3B	11/9/04	45234	BCG

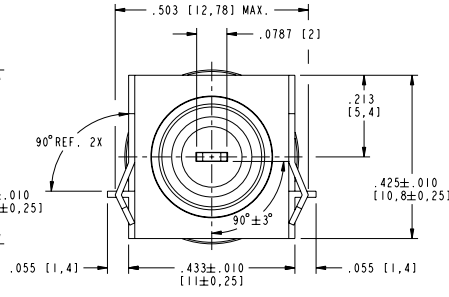
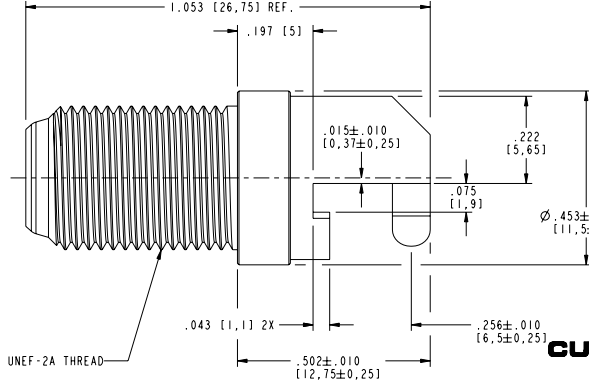


PCB MOUNTING PATTERN

SCALE 1.500



SCALE 1.000



CUSTOMER OUTLINE DRAWING
ALL OTHER SHEETS ARE FOR INTERNAL USE ONLY

UNLESS OTHERWISE SPECIFIED, DIMENSIONS ARE IN INCHES AND TOLERANCES ARE: 2 PLACE DECIMAL ±.015 (0,381 mm) 3 PLACE DECIMAL ±.005 (0,127 mm) ANGLES ± 1°	MATERIAL	DRAWN	DATE	TITLE	Amphenol RF Danbury, CT, USA Tainan, Taiwan Shenzhen, China www.amphenolrf.com SCALE: 4.0:1 SHEET 2 OF 2
	REFERENCE 119479 SIMILAR TO: 531-40101 EARR 809 GEN# KJ-F625100-005-N.TPPT	B. C. GLEISSNER	05-Mar-03	F RECEPTACLE, PCB, EDGE MOUNT (BLUE INSULATOR)	
NOTICE - These drawings, specifications, or other data (1) are, and remain the property of Amphenol Corp. (2) must be returned upon request; and (3) are confidential and not to be disclosed to any person other than those to whom they are given by Amphenol Corp. The furnishing of these drawings, specifications, or other data by Amphenol Corp., or to any other person for any purpose is not to be regarded by implication or otherwise in any manner licensing, granting rights or permitting such holder or any other person to manufacture, use or sell any product, process or design, patented or otherwise, that may in any way be related to or disclosed by said drawings, specifications, or other data.		ENGINEER	DATE		
		B. C. GLEISSNER	05-Mar-03		
		APPROVED	DATE		
		O. BARTHELMES	6/11/03		
		CAD FILE	CODE ID	DWG SIZE	DRAWING NO.
		I:\CATV\F&G\531-40144	74868	B	531-40144
					REV B