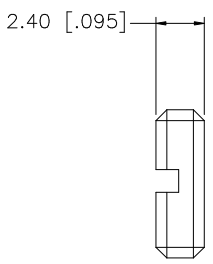
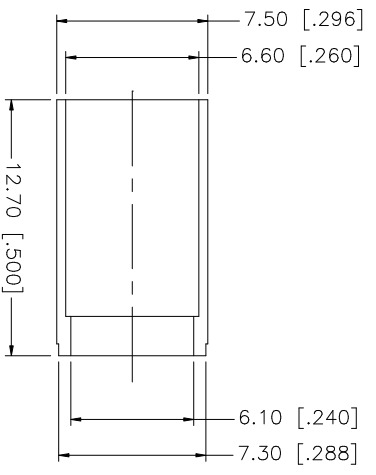
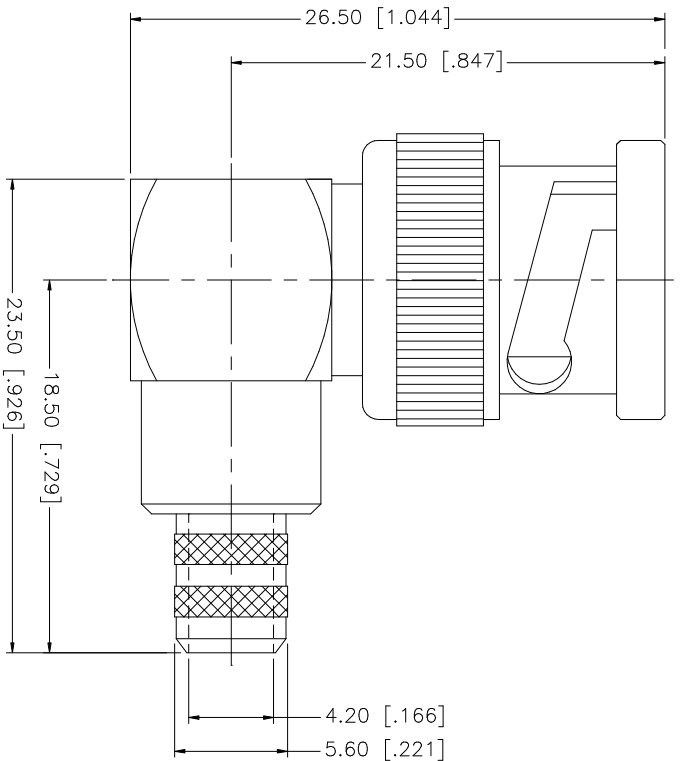
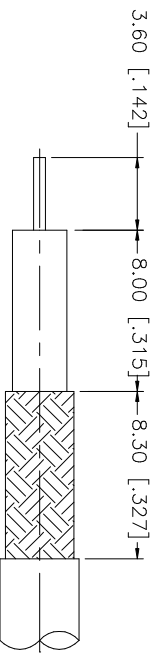


REV.	DATE	DESCRIPTION
NC	06/11/00	INITIAL RELEASE
A	08/17/06	UPDATE DRAWING FORMAT



CRIMP NOTES:

1. CRIMPED FERRULE HEX CRIMP SIZE .255"
2. CENTER CONTACT TO SOLDER.



8	DESCRIPTION	MATERIAL	FINISH	QTY	UNLESS OTHERWISE SPECIFIED DIMENSIONS ARE IN INCHES AND FOR CUSTOMER REFERENCE ONLY. TOLERANCES FOR MILLIMETERS ARE: UNLESS OTHERWISE SPECIFIED 0.5 - 8mm ± 0.20mm 8 - 30mm ± 0.40mm 30 - 120mm ± 0.50mm TOLERANCES FOR INCHES ARE: UNLESS OTHERWISE SPECIFIED 0.020 - .315 = ± 0.007" .315 - 1.180 = ± 0.015" 1.180 - 4.724 = ± 0.020"
7					
6	FERRULE	COPPER	NICKEL	1	
5	COVER	BRASS	NICKEL	1	
4	CONTACT PIN	BRASS	GOLD	1	
3	INSULATOR	TEFLON	NATURAL	1	
2	BODY	BRASS	NICKEL	1	
1	DESCRIPTION	MATERIAL	FINISH	QTY	

APPROVALS	DATE
DRAWN G.R.S.	08/17/06
CHECKED	
ISSUED	
SHEET 1 OF 1	

PART DESCRIPTION	PART NO.
BNC R/A CRIMP PLUG (AT&T 734A CABLE)	112961

CAD FILE	DWG. NO.	REV.	SIZE	SCALE
C:/112/112961.DWG	112961.DWG	A	A	NA

Amphenol Connex