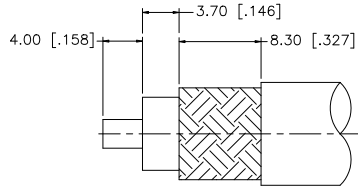
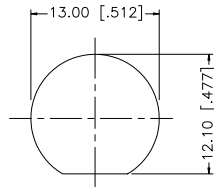
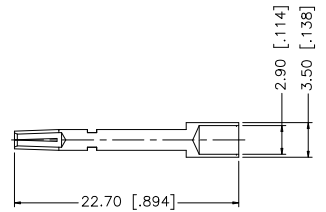
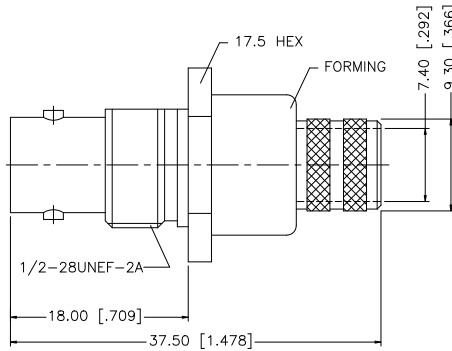
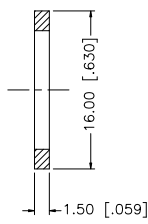
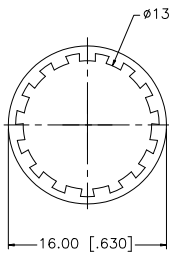
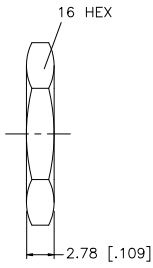


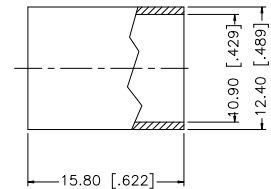
REV.	DATE	ECR NO.	DESCRIPTION
NC	08/18/98	-	INITIAL RELEASE
A	12/03/08	100050	UPDATE DRAWING FORMAT



RECOMMENDED  
CABLE STRIPPING DIM'S



RECOMMENDED  
MOUNTING HOLE



DESCRIPTION	MATERIAL	FINISH	QTY	DO NOT SCALE DRAWING	APPROVALS	DATE	Amphenol Connex			
8							<b>BNC BULKHEAD CRIMP JACK (FOR BELDEN 8214, 9913, 9914 CABLE)</b>			
7	FERRULE	COPPER	NICKEL	1	DRAWN	GRS				12/03/08
6	HEX NUT	BRASS	NICKEL	1	CHECKED					
5	LOCK WASHER	BRASS	NICKEL	1	ISSUED					
4	GASKET	RUBBER	RED	1	SHEET	1 OF 1				
3	CONTACT PIN	PHOS. BRONZE	GOLD	1	CAD FILE					
2	INSULATOR	PTFE	NATURAL	1						
1	BODY/HOUSING	BRASS	NICKEL	1						
					C:/112/112604.DWG		PART NO. 112604			
					DWG. NO. 112604.DWG		REV. A	SIZE A	SCALE NA	

UNLESS OTHERWISE SPECIFIED DIMENSIONS ARE IN MILLIMETERS. DIMENSIONS IN ( ) ARE IN INCHES AND FOR CUSTOMER REFERENCE ONLY.

UNLESS OTHERWISE SPECIFIED TOLERANCES FOR MILLIMETERS ARE:  
0.5 - 8mm ± 0.20mm  
8 - 30mm ± 0.40mm  
30 - 120mm ± 0.50mm

UNLESS OTHERWISE SPECIFIED TOLERANCES FOR INCHES ARE:  
.020 - .315 = ± 0.007"  
.315 - 1.180 = ± 0.015"  
1.180 - 4.724 = ± 0.020"

**Amphenol Connex**

**BNC BULKHEAD CRIMP JACK  
(FOR BELDEN 8214, 9913, 9914 CABLE)**

112604

112604.DWG

REV. A SIZE A SCALE NA