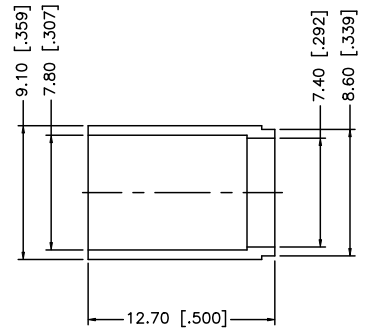
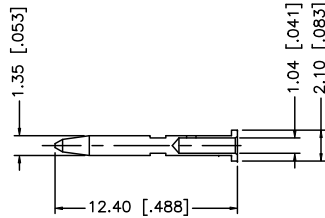
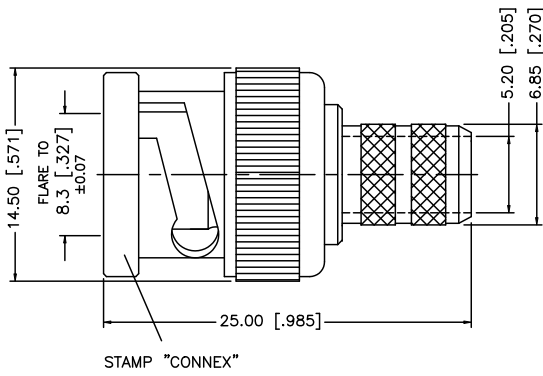
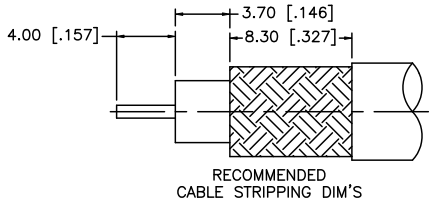


REV.	DATE	ECR NO.	DESCRIPTION
NC	04/03/97	-	INITIAL RELEASE
A	05/01/04	-	UPDATE DRAWING FORMAT
B	10/27/08	-	ADD NOTES 1 AND 2



NOTES:

1. CRIMP FERRULE HEX CRIMP SIZE .320" [8.13]
2. CRIMPED CONTACT PIN SQ. CRIMP .043" [1.09]
OR 12 INDENT CRIMP.

DESCRIPTION	MATERIAL	FINISH	QTY	APPROVALS	DATE	<h1 style="color: blue; margin: 0;">Amphenol Connex</h1>
				DRAWN GRS	10/27/08	
				CHECKED		PART DESCRIPTION
				ISSUED		PART NO.
				SHEET 1 OF 1		
				CAD FILE C:/112/112957.DWG		DWG. NO. 112957.DWG
						REV. B
						SIZE A
						SCALE NA

UNLESS OTHERWISE SPECIFIED DIMENSIONS ARE IN MILLIMETERS. DIMENSIONS IN [] ARE IN INCHES AND FOR CUSTOMER REFERENCE ONLY.

UNLESS OTHERWISE SPECIFIED TOLERANCES FOR MILLIMETERS ARE:
0.5 - 8mm ± 0.20mm
8 - 30mm ± 0.40mm
30 - 120mm ± 0.50mm

UNLESS OTHERWISE SPECIFIED TOLERANCES FOR INCHES ARE:
.020 - .315 = ± 0.007"
.315 - 1.180 = ± 0.015"
1.180 - 4.724 = ± 0.020"

DO NOT SCALE DRAWING