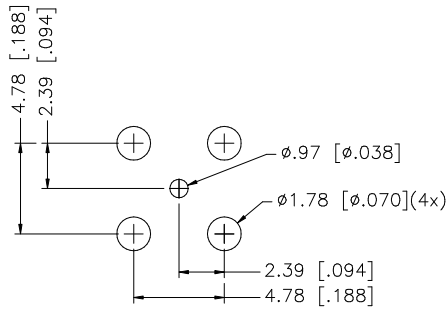
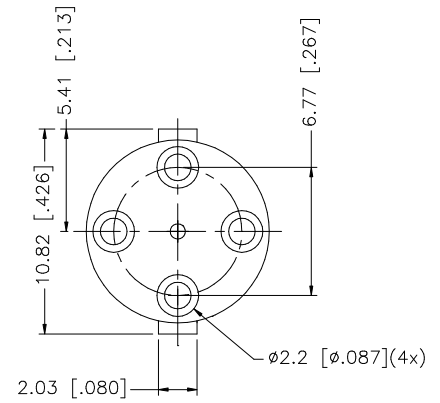
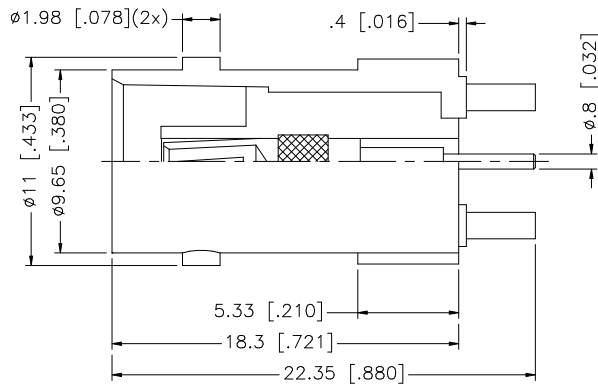


REV.	DATE	DESCRIPTION
NC	03/05/98	INITIAL RELEASE
A	03/11/07	UPDATE DRAWING FORMAT



PCB MOUNTING HOLES



				UNLESS OTHERWISE SPECIFIED DIMENSIONS ARE IN MILLIMETERS. DIMENSIONS IN [ ] ARE IN INCHES AND FOR CUSTOMER REFERENCE ONLY.	APPROVALS	DATE	<b>Amphenol Connex</b>			
8				UNLESS OTHERWISE SPECIFIED TOLERANCES FOR MILLIMETERS ARE: 0.5 - 8mm ± 0.20mm 8 - 30mm ± 0.40mm 30 - 120mm ± 0.50mm  UNLESS OTHERWISE SPECIFIED TOLERANCES FOR INCHES ARE: .020 - .315 = ± 0.007" .315 - 1.180 = ± 0.015" 1.180 - 4.724 = ± 0.020"	DRAWN	G.R.S.				03/11/07
7					CHECKED			PART NO. <b>112586</b>		
6						ISSUED				
5						SHEET	1 OF 1	REV. A	SIZE A	SCALE NA
4					CAD FILE C:/112/112586.DWG					
3	CONTACT PIN	BER. COPPER	GOLD	1						
2	INSULATOR	TEFLON	NATURAL	1						
1	BODY	DIECAST	NICKEL	1						
DESCRIPTION				MATERIAL	FINISH	QTY	DO NOT SCALE DRAWING			