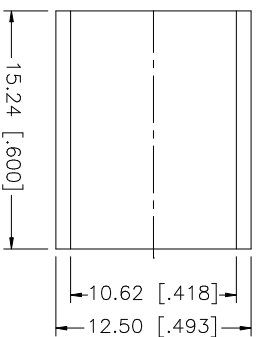
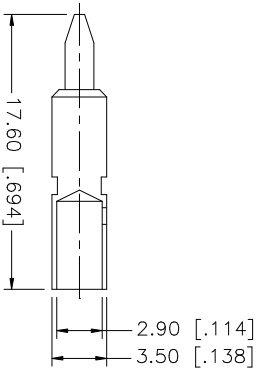
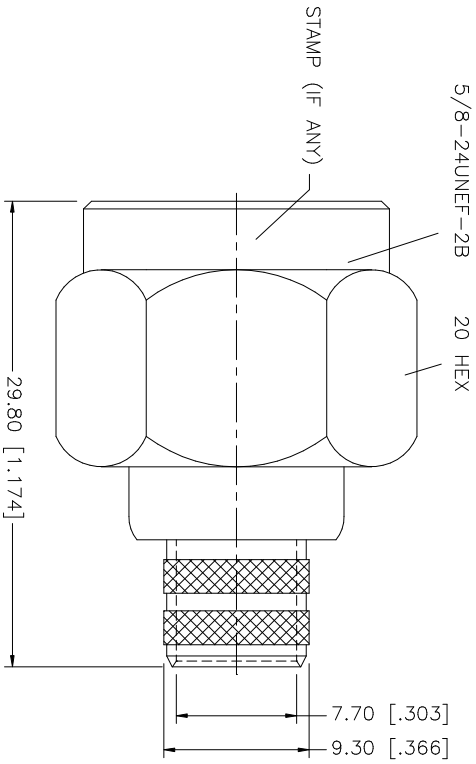
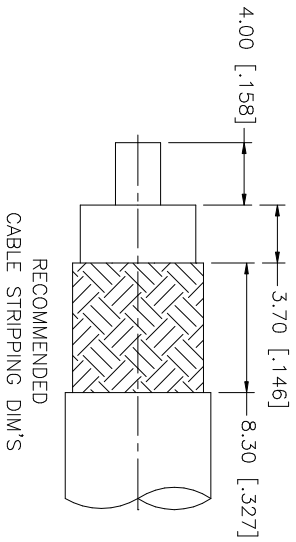


| REV. | DATE | DESCRIPTION |
|------|----------|--------------------------|
| A | 04/13/03 | UPDATE DRAWING FORMAT |
| B | 02/23/06 | MODIFY FERRULE DIAMETERS |



CRIMP NOTES:

1. CRIMPED FERRULE
HEX CRIMP SIZE .429"
2. CRIMPED CONTACT PIN
HEX CRIMP SIZE .118"

Amphenol Connex

N CRIMP PLUG, HEX NUT
(FOR B9913, 9914 LMR400 CABLE)

| QTY | DESCRIPTION | MATERIAL | FINISH |
|-----|----------------|----------|----------|
| 1 | INSULATOR BODY | BRASS | NEKOCOTE |
| 1 | INSULATOR | TEFLON | NATURAL |
| 1 | CONTACT PIN | BRASS | GOLD |
| 1 | FERRULE | COPPER | NEKOCOTE |
| 1 | HEX NUT | 20 HEX | |

| UNLESS OTHERWISE SPECIFIED DIMENSIONS ARE IN MILLIMETERS DIMENSIONS IN [] ARE IN INCHES AND FOR CUSTOMER REFERENCE ONLY. | UNLESS OTHERWISE SPECIFIED TOLERANCES FOR MILLIMETERS ARE: | UNLESS OTHERWISE SPECIFIED TOLERANCES FOR INCHES ARE: |
|---|--|---|
| 0.5 - 8mm ± 0.20mm | 8 - 30mm ± 0.40mm | 30 - 120mm ± 0.50mm |
| .020 - .315 = ± 0.007" | .315 - 1.180 = ± 0.015" | 1.180 - 4.724 = ± 0.020" |

| APPROVALS | DATE |
|--------------|----------|
| DRAWN G.R.S. | 02/23/06 |
| CHECKED | |
| ISSUED | |
| SHEET 1 OF 1 | |

| PART NO. | PART DESCRIPTION |
|-----------------|---|
| 172102H243NX-10 | N CRIMP PLUG, HEX NUT (FOR B9913, 9914 LMR400 CABLE) |

| CAD FILE | DWG. NO. | REV. | SIZE | SCALE |
|----------------------------|---------------------|------|------|-------|
| C:/172/172102H243NX-10.DWG | 172102H243NX-10.DWG | B | A | NA |