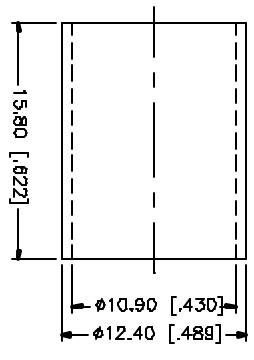
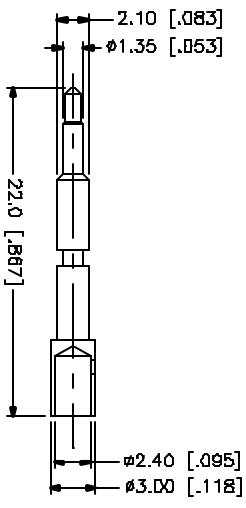
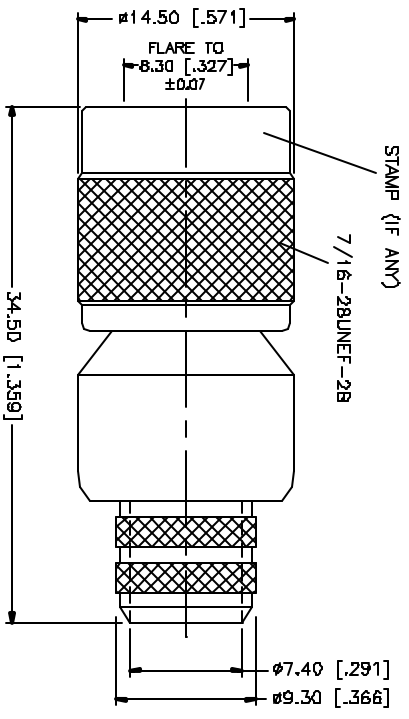
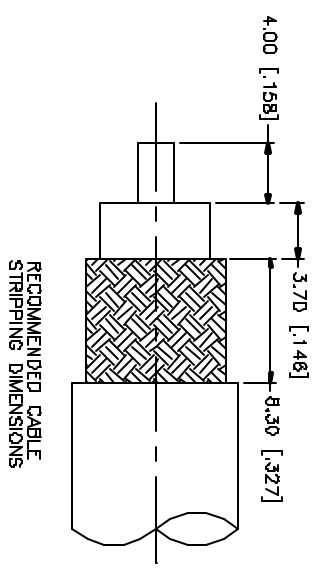


REV.	DATE	DESCRIPTION
NC	05/27/97	INITIAL RELEASE
A	05/01/04	UPDATE DRAWING FORMAT



NOTE:
 1. CRIMPED FERRULE
 HEX CRIMP SIZE .429"
 2. CRIMPED CONTACT PIN
 HEX CRIMP SIZE .100"

QTY	FINISH	MATERIAL	DESCRIPTION
1	NICKEL	COPPER	FERRULE
1	NATURAL	BRASS	CONTACT PIN
1	NICKEL	BRASS	BODY

APPROVALS	DATE
DRAWN G.R.S.	05/01/04
CHECKED	
ISSUED	
BHEET	1 OF 1

Amphenol Connex

TNC CRIMP PLUG
 (FOR BELDEN 8/U, 213U)

1222394

DWG NO. 1222394.DWG

REV. A

SIZE A

SCALE NA