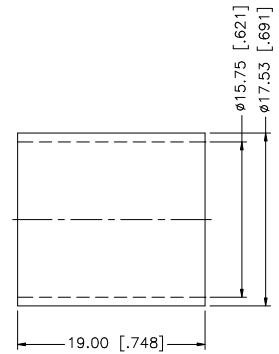
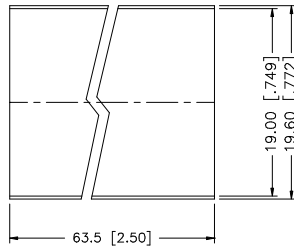
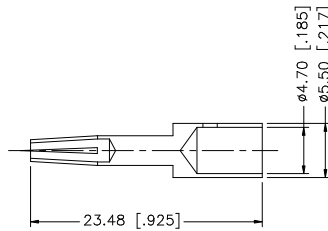
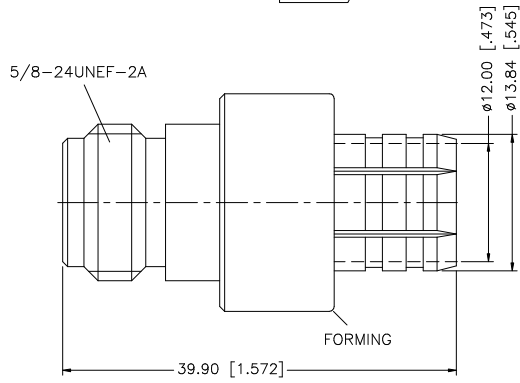
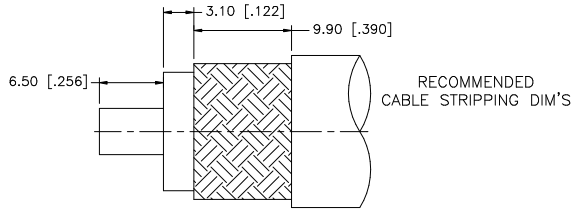


REV.	DATE	DESCRIPTION
NC	03/18/98	INITIAL RELEASE
A	02/19/07	UPDATE DRAWING FORMAT



DESCRIPTION	MATERIAL	FINISH	QTY	UNLESS OTHERWISE SPECIFIED DIMENSIONS ARE IN MILLIMETERS; DIMENSIONS IN [] ARE IN INCHES AND FOR CUSTOMER REFERENCE ONLY.	APPROVALS	DATE	Amphenol Connex				
8					DRAWN	G.R.S.	03/11/07	PART DESCRIPTION			
7					CHECKED			N CRIMP JACK - LMR 600 CABLE			
6					ISSUED			-			
5	HEAT SHRINK		1		SHEET	1 OF 1		PART NO.			
4	FERRULE	COPPER	NICKEL	1				172207			
3	CONTACT PIN	PHOS. BRONZE	GOLD	1				DWG. NO. 172207.DWG			
2	INSULATOR	TEFLON	NATURAL	1				REV.	A	SCALE	NA
1	BODY	BRASS	NICKEL	1				SIZE	A		
					CAD FILE	C:/172/172207.DWG					
					DO NOT SCALE DRAWING						

UNLESS OTHERWISE SPECIFIED DIMENSIONS ARE IN MILLIMETERS; DIMENSIONS IN [] ARE IN INCHES AND FOR CUSTOMER REFERENCE ONLY.

UNLESS OTHERWISE SPECIFIED TOLERANCES FOR MILLIMETERS ARE:
0.5 - 8mm ± 0.20mm
8 - 30mm ± 0.40mm
30 - 120mm ± 0.50mm

UNLESS OTHERWISE SPECIFIED TOLERANCES FOR INCHES ARE:
.020 - .315 = ± 0.007"
.315 - 1.180 = ± 0.015"
1.180 - 4.724 = ± 0.020"

Amphenol Connex

N CRIMP JACK - LMR 600 CABLE

172207

172207.DWG

REV. A SIZE A SCALE NA