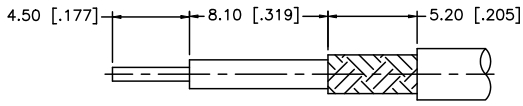
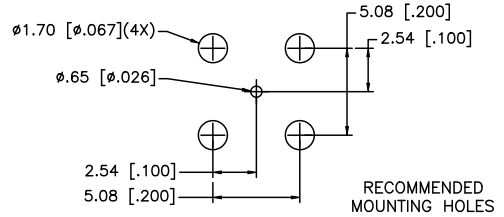
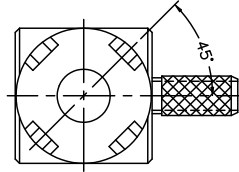
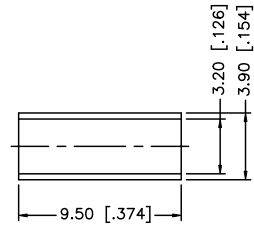
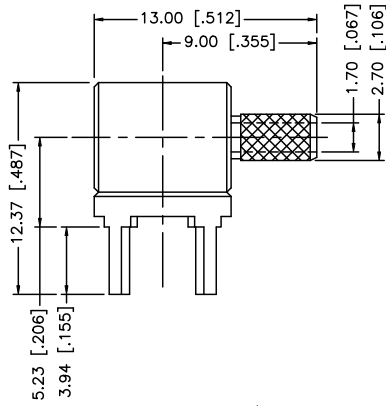
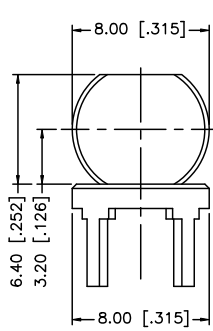


REV.	DATE	DESCRIPTION
NC	12/05/99	INITIAL RELEASE
A	11/13/05	MODIFY FERRULE LENGTH, STRIPPING DIMENSIONS, DRAWING FORMAT
B	09/03/07	REVISE BARREL, FERRULE DIMENSIONS
C	04/02/08	ADD CRIMP NOTE



RECOMMENDED
CABLE STRIPPING DIM'S



RECOMMENDED
MOUNTING HOLES

NOTE:
1. CRIMPED FERRULE HEX CRIMP SIZE .128"

				UNLESS OTHERWISE SPECIFIED DIMENSIONS ARE IN MILLIMETERS. DIMENSIONS IN [] ARE IN INCHES AND FOR CUSTOMER REFERENCE ONLY.	APPROVALS	DATE	Amphenol Connex				
8					DRAWN	G.R.S.					04/02/08
7					CHECKED			PART NO. 142268			
6					ISSUED						
5					SHEET	1 OF 1		REV. C SIZE A SCALE NA			
4					CAD FILE	C:/142/142268.DWG					
3	FERRULE	COPPER	GOLD	1	UNLESS OTHERWISE SPECIFIED TOLERANCES FOR MILLIMETERS ARE: 0.5 - 8mm ± 0.20mm 8 - 30mm ± 0.40mm 30 - 120mm ± 0.50mm UNLESS OTHERWISE SPECIFIED TOLERANCES FOR INCHES ARE: .020 - .315 = ± 0.007" .315 - 1.180 = ± 0.015" 1.180 - 4.724 = ± 0.020"						
2	BARREL	BRASS	GOLD	1							
1	BODY	BRASS	GOLD	1							
	DESCRIPTION	MATERIAL	FINISH	QTY							