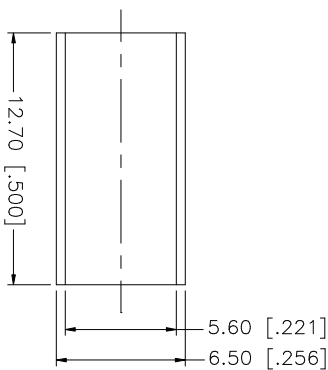
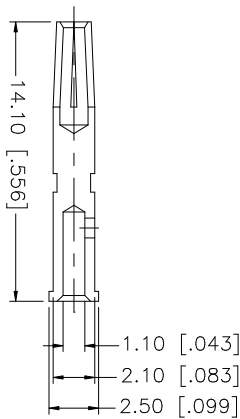
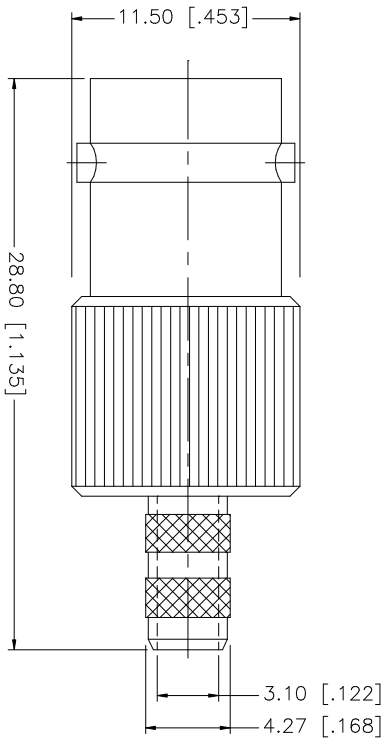
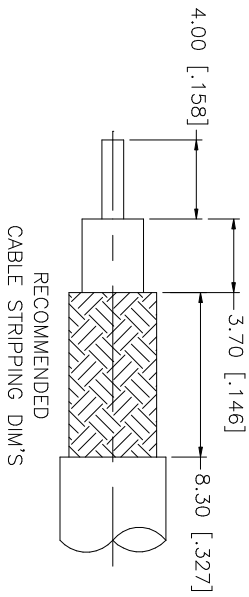


REV.	DATE	DESCRIPTION
NC	07/31/05	INITIAL RELEASE
A	10/30/05	MODIFY FERRULE DIMENSIONS, ADD CABLE DESCRIPTION.



NOTE:

1. CRIMPED FERRULE
HEX CRIMP SIZE .213"
2. CRIMPED CONTACT PIN
HEX CRIMP SIZE .068"

Amphenol **Comnex**

PART DESCRIPTION
BNC CRIMP JACK
(FOR RG-223/U, 142/U, 402/U CABLE)

PART NO. 112513

UNLESS OTHERWISE SPECIFIED DIMENSIONS ARE IN MILLIMETERS. DIMENSIONS IN [] ARE IN INCHES AND FOR CUSTOMER REFERENCE ONLY.	UNLESS OTHERWISE SPECIFIED TOLERANCES FOR MILLIMETERS ARE:	UNLESS OTHERWISE SPECIFIED TOLERANCES FOR INCHES ARE:	APPROVALS	DATE	DWG. NO.	REV.	SIZE	SCALE
	0.5 - 8mm ± 0.20mm	.020 - .315 = ± 0.007"	DRAWN	G.R.S.	10/30/05	112513.DWG	A	NA
	B - 30mm ± 0.40mm	.315 - 1.180 = ± 0.015"	CHECKED					
	30 - 120mm ± 0.30mm	1.180 - 4.724 = ± 0.020"	ISSUED					
			SHEET	1 OF 1				
8			CAD FILE C:/112/112513.DWG					
7								
6								
5								
4	FERRULE	COPPER						
3	CONTACT PIN	PHOS. BRONZE						
2	INSULATOR	DELRIN						
1	HOUSING/BODY	BRASS						
	DESCRIPTION	MATERIAL	FINISH	QTY	DO NOT SCALE DRAWING			