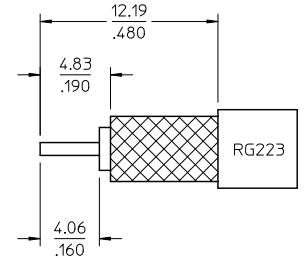
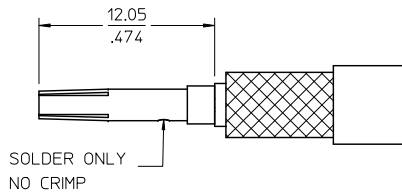
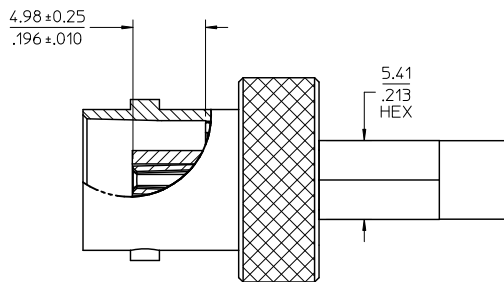
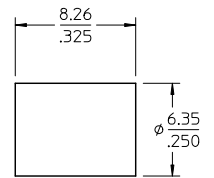
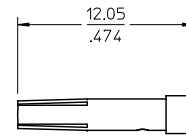
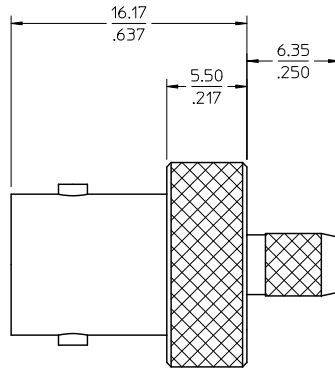
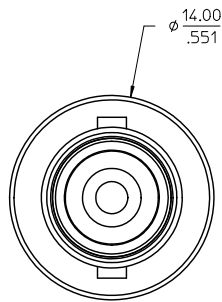


MATERIALS AND FINISHES

BODY: BRASS
PLATED NICKEL

CENTER CONTACT: BERYLLIUM COPPER
PLATED GOLD

INSULATOR: TEFLON



PART # 73101-0590

PS-89675-1030	PRODUCT SPECIFICATION
MIL-STD-348A, FIG. 301.2	INTERFACE
SPECIFICATION	DESCRIPTION

CHG: RECREATED
MODELS AND ADDED
CABLE ASSY INSTRS.

EC NO: URF2011-0566
DRAWN: ROBERTSON 2011/03/28
CHKD: SSS 2011/03/28
APPR: JMWENER 2011/03/28

QUALITY SYMBOLS
 = 0
 = 0

GENERAL TOLERANCES (UNLESS SPECIFIED)		
	mm	INCH
4 PLACES	± .10	± .004
3 PLACES	± .13	± .005
2 PLACES	± .15	± .006
1 PLACE	± .25	± .010
ANGULAR ± 2 °		

DIMENSION STYLE	
MM/IN	SCALE
DRAWN BY CLLI	DATE 2004/09/21
CHECKED BY PENNY	DATE 2004/09/21
APPROVED BY MISEN	DATE 2004/09/21
MATERIAL NO. 731010590	DOCUMENT NO. SD-73101-059

DESIGN UNITS	THIRD ANGLE PROJECTION
METRIC	
TITLE BNC 50 OHM JACK FOR RG223/55/142 BNC-PC	
MOLEX INCORPORATED	
SHEET NO. 1 OF 1	

DRAFT WHERE APPLICABLE
MUST REMAIN
WITHIN DIMENSIONS

SIZE
C

THIS DRAWING CONTAINS INFORMATION THAT IS PROPRIETARY TO MOLEX INCORPORATED AND SHOULD NOT BE USED WITHOUT WRITTEN PERMISSION