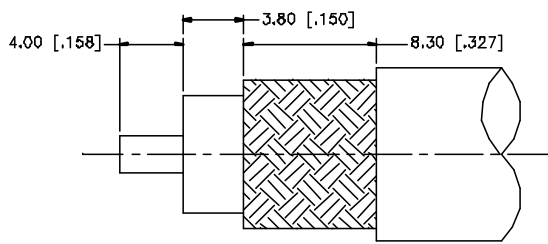
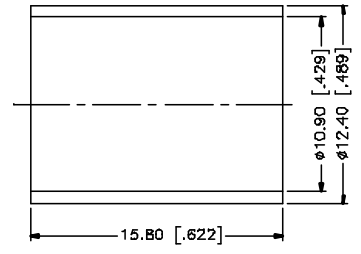
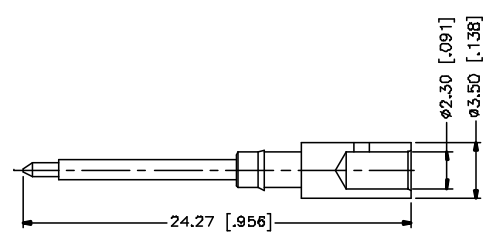
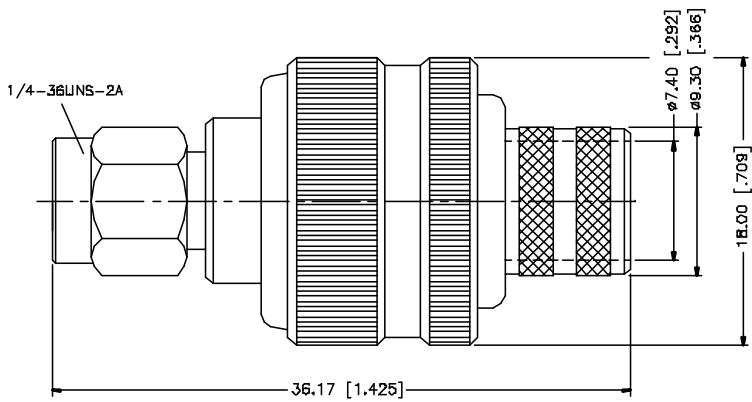


REV.	DATE	DESCRIPTION
NC	03/27/05	INITIAL RELEASE



RECOMMENDED
CABLE STRIPPING DIM'S



- NOTE:
1. CRIMPED FERRULE
HEX CRIMP SIZE .429"
 2. CRIMPED CONTACT PIN
HEX CRIMP SIZE .118"

DESCRIPTION	MATERIAL	FINISH	QTY	APPROVALS	DATE	<h1 style="color: blue; margin: 0;">Amphenol Connex</h1>
8				DRAWN G.R.S.	03/27/05	
7				CHECKED		
6				ISSUED		
5				SHEET 1 OF 1		
4	FERRULE	COPPER	GOLD	1		PART NO. 132368
3	CONTACT PIN	BRASS	GOLD	1		DWG. NO. 132368.DWG
2	INSULATOR	TEFLON	NATURAL	1		REV. A
1	BDDY	BRASS	GOLD	1		SIZE A
						SCALE NA

UNLESS OTHERWISE SPECIFIED DIMENSIONS ARE IN MILLIMETERS DIMENSIONS IN [] ARE IN INCHES AND FOR CUSTOMER REFERENCE ONLY.

UNLESS OTHERWISE SPECIFIED TOLERANCES FOR MILLIMETERS ARE:
0.5 - 8mm ± 0.20mm
8 - 30mm ± 0.40mm
30 - 120mm ± 0.60mm

UNLESS OTHERWISE SPECIFIED TOLERANCES FOR INCHES ARE:
.020 - .315 ± 0.007"
.315 - 1.180 ± 0.015"
1.180 - 4.724 ± 0.020"

DO NOT SCALE DRAWING

CAD FILE C:/132/132368.DWG