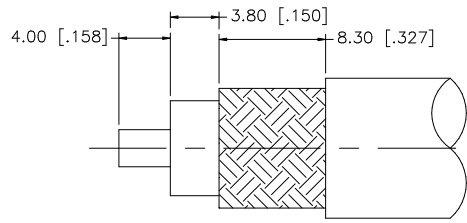
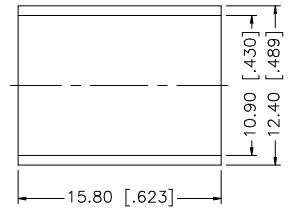
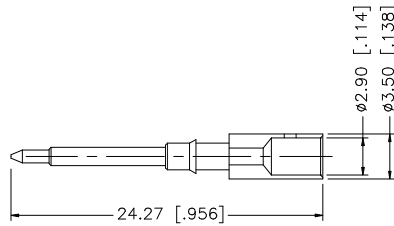
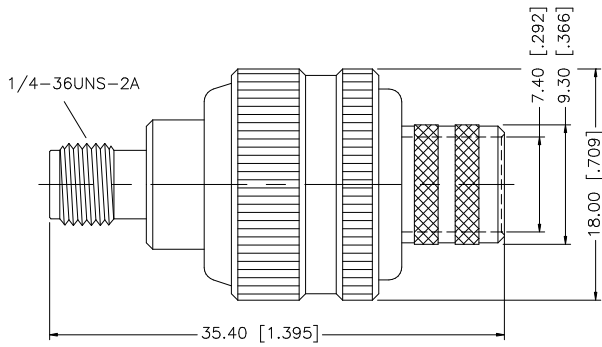


REV.	DATE	DESCRIPTION
NC	01/11/07	INITIAL RELEASE



RECOMMENDED
CABLE STRIPPING DIM'S



CRIMP NOTES:

1. CRIMPED FERRULE HEX CRIMP SIZE .429"
2. CRIMPED CONTACT PIN HEX CRIMP SIZE .118"

DESCRIPTION	MATERIAL	FINISH	QTY	UNLESS OTHERWISE SPECIFIED DIMENSIONS ARE IN MILLIMETERS. DIMENSIONS IN [] ARE IN INCHES AND FOR CUSTOMER REFERENCE ONLY.	APPROVALS	DATE	Amphenol Connex						
8					DRAWN	G.R.S.	01/11/07	PART DESCRIPTION SMA REVERSE POLARITY CRIMP JACK (FOR BELDEN 9913, 9914, LMR400)					
7					CHECKED								
6					ISSUED								
5					SHEET	1 OF 1							
4	FERRULE	COPPER	GOLD	1				PART NO. 132332RP					
3	CONTACT PIN	BRASS	GOLD	1				DWG. NO. 132332RP.DWG					
2	INSULATOR	TEFLON	NATURAL	1				REV.	A	SIZE	A	SCALE	NA
1	BODY	BRASS	GOLD	1									
				UNLESS OTHERWISE SPECIFIED TOLERANCES FOR MILLIMETERS ARE: 0.5 - 8mm ± 0.20mm 8 - 30mm ± 0.40mm 30 - 120mm ± 0.50mm									
				UNLESS OTHERWISE SPECIFIED TOLERANCES FOR INCHES ARE: .020 - .315 = ± 0.007" .315 - 1.180 = ± 0.015" 1.180 - 4.724 = ± 0.020"									
				DO NOT SCALE DRAWING	CAD FILE C:/132/132332RP.DWG								