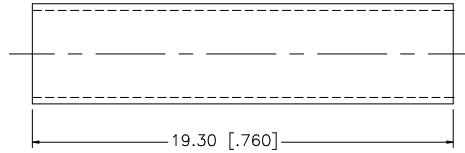
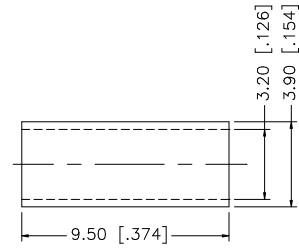
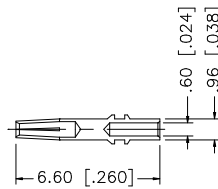
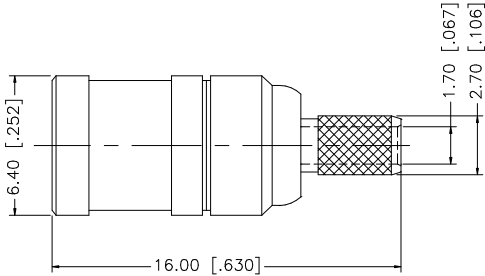
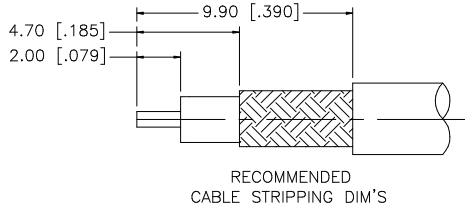


REV.	DATE	DESCRIPTION
A	04/31/03	UPDATE DRAWING FORMAT
B	05/02/07	REVISE BARREL AND FERRULE DIMENSIONS



NOTE:

1. CRIMPED FERRULE HEX CRIMP SIZE .128"
2. CONTACT PIN TO SOLDER.

REV.	DATE	DESCRIPTION	APPROVALS	DATE	Amphenol Connex			
8					PART DESCRIPTION SMB CRIMP PLUG (FOR RG-174/U, 188A/U, 316/U)			
7								
6					PART NO. 142178			
5								
4					DWG. NO. 142178.DWG			
3								
2					REV. B SIZE A SCALE NA			
1								
UNLESS OTHERWISE SPECIFIED DIMENSIONS ARE IN MILLIMETERS DIMENSIONS IN [] ARE IN INCHES AND FOR CUSTOMER REFERENCE ONLY. UNLESS OTHERWISE SPECIFIED TOLERANCES FOR MILLIMETERS ARE: 0.5 - 8mm ± 0.20mm 8 - 30mm ± 0.40mm 30 - 120mm ± 0.50mm UNLESS OTHERWISE SPECIFIED TOLERANCES FOR INCHES ARE: .020 - .315 = ± 0.007" .315 - 1.180 = ± 0.015" 1.180 - 4.724 = ± 0.020" DO NOT SCALE DRAWING					DRAWN G.R.S. 05/02/07 CHECKED ISSUED SHEET 1 OF 1 CAD FILE C:/142/142178.DWG			
DESCRIPTION	MATERIAL	FINISH	QTY					
HEAT SHRINK TUBE		BLACK	1					
FERRULE	COPPER	NICKEL	1					
CONTACT PIN	BER. COPPER	GOLD	1					
INSULATOR	TEFLON	NATURAL	1					
BODY	BRASS	NICKEL	1					