

NOTES

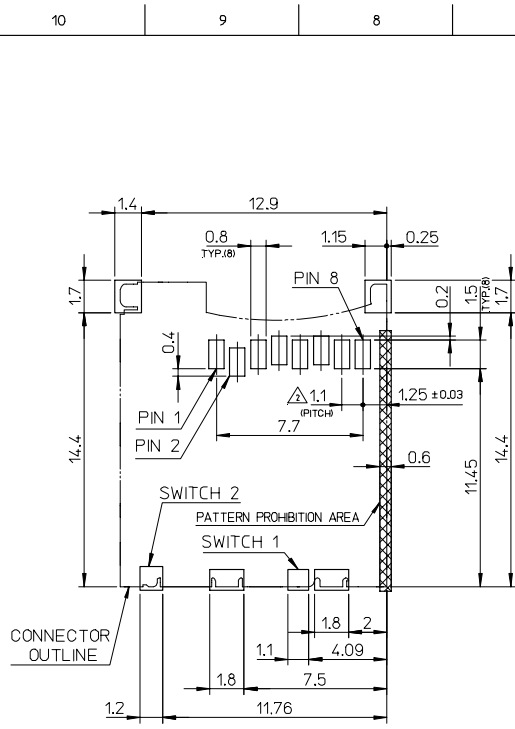
- ターミナル及びネールの平坦度は 0.1 MAX.
TERMINAL AND NAIL COPLANARITY TO BE 0.1 MAX.
公差非累積
TOLERANCE : NON-CUMULATIVE

| | |
|---------------------------------------|-----------------------------|
| カード位置状態 CARD INSERTION STATE | ディテクト スイッチ DETECT SWITCH |
| カード 排出位置 CARD DASHING OUT POSITION | オープン OPEN |
| カードロック位置 CARD LOCK POSITION | クローズ CLOSE |
| カード押し込み位置 CARD PUSH POSITION | クローズ CLOSE |

- ROHS COMPLIANT

| | | |
|----------------|--------------|-------------|
| EMBOSSED TAPE | 501588-0802 | 501588-08** |
| CONNECTOR ONLY | 501588-0808 | |
| PACKAGE | MATERIAL NO. | MODEL NO. |

| | | | | | | |
|---|---------------------------------------|--------------------|-------|---------------|------------------------|---|
| REVISED EC NO: J2006-1906 DRWN: NNHSI CHKD: SMARUYAM APPR: SMARUYAM 2005/12/07 2005/12/07 2005/12/14 | GENERAL TOLERANCES (UNLESS SPECIFIED) | | SCALE | DESIGN UNITS | THIRD ANGLE PROJECTION | REVISE ON CAD ONLY |
| | 10 UNDER | ±0.2 | 5:1 | METRIC | | TFR CARD CONN. WITH DETECT SWITCH ASS'Y -LEAD FREE- |
| | 10 OVER 30 UNDER | ±0.25 | | MM ONLY | | |
| | 30 OVER | ±0.3 | | | | |
| | ANGULAR | ± ° 1 | | | | |
| DRAFT WHERE APPLICABLE MUST REMAIN WITHIN DIMENSIONS | | | | | | |
| DRAWN BY DATE | | CHECKED BY DATE | | MATERIAL NO. | | DOCUMENT NO. |
| S.MARUYAM 2005/10/12 | | M.SASAO 2005/10/12 | | SEE CHART | | SD-501588-003 |
| APPROVED BY DATE | | MATERIAL NO. | | DOCUMENT NO. | | SHEET NO. |
| M.SASAO 2005/10/12 | | SEE CHART | | SD-501588-003 | | 1 OF 2 |
| THIS DRAWING CONTAINS INFORMATION THAT IS PROPRIETARY TO MOLEX INCORPORATED AND SHOULD NOT BE USED WITHOUT WRITTEN PERMISSION | | | | | | |



RECOMMENDED
PCB PATTERN LAYOUT
(GENERAL TOLERANCE : ±0.05)

| PARTS | QTY | MATERIAL | FINISH |
|-------------------------------|-----|---|--|
| ハウジング HOUSING | 1 | ガラス入り耐熱樹脂 (LCP), UL94V-0 色:黒 HEAT RESISTANCE POLYMER (LCP), UL94V-0, BLACK | --- |
| スライダークラム SLIDER CAM | 1 | ガラス入り耐熱樹脂 (LCP), UL94V-0 色:黒 HEAT RESISTANCE POLYMER (LCP), UL94V-0, BLACK | --- |
| ターミナル TERMINAL | 8 | りん青銅 PHOSPHOR BRONZE | 接点部 : 金メッキ 0.5 μm MIN. CONTACT AREA : GOLD 0.5 μm MIN. 下地 : ニッケルメッキ 2.0 μm MIN. UNDER PLATING : NICKEL 2.0 μm MIN. 半田付け部 : 錫メッキ 1.0 μm MIN. SOLDER AREA : TIN 1.0 μm MIN. |
| ディテクトターミナル DETECT TERMINAL | 1 | ベリリウム銅 BERYLLIUM COPPER | 接点部 : 金メッキ 0.5 μm MIN. CONTACT AREA : GOLD 0.5 μm MIN. 下地 : ニッケルメッキ 2.0 μm MIN. UNDER PLATING : NICKEL 2.0 μm MIN. 半田付け部 : 錫メッキ 1.0 μm MIN. SOLDER AREA : TIN 1.0 μm MIN. |
| ディテクトネイル DETECT NAIL | 1 | りん青銅 PHOSPHOR BRONZE | 接点部 : 金メッキ 0.5 μm MIN. CONTACT AREA : GOLD 0.5 μm MIN. 下地 : ニッケルメッキ 2.0 μm MIN. UNDER PLATING : NICKEL 2.0 μm MIN. 半田付け部 : 錫メッキ 1.0 μm MIN. SOLDER AREA : TIN 1.0 μm MIN. |
| メタルカバー METAL COVER | 1 | ステンレス鋼 STAINLESS STEEL | 全面 : ニッケルメッキ 1.0 μm MIN. ALLOVER : NICKEL 1.0 μm MIN. |
| ピン PIN | 1 | ステンレス鋼 STAINLESS STEEL | --- |
| スプリング SPRING | 1 | ピアノ線 SWP | 全面 : ニッケルメッキ ALLOVER : NICKEL |

| | | | | | | | |
|--|--|--|----------------------------|------------------------|---|-------------------------------|----|
| REVISED EC NO: J2006-1906 DRW: NNHS CHKD: 2005/12/07 APPR: SMARUYAM/2005/12/14 | GENERAL TOLERANCES (UNLESS SPECIFIED) | | SCALE 5:1 | DESIGN UNITS METRIC | 501588-08** | MODEL NO. | |
| | 10 UNDER | ±0.2 | DIMENSION STYLE MM ONLY | | THIRD ANGLE PROJECTION | REVISE ON CAD ONLY | |
| | 10 OVER 30 UNDER | ±0.25 | DRAWN BY S.MARUYAM | | TITLE TFR CARD CONN. WITH DETECT SWITCH ASSY -LEAD FREE- | | |
| | 30 OVER | ±0.3 | DATE 2005/10/12 | | MOLEX INCORPORATED | | |
| | ANGULAR ± ° 1 | CHECKED BY M.SASAO | | DATE 2005/10/12 | MATERIAL NO. SEE CHART | DOCUMENT NO. SD-501588-003 | |
| | DRAFT WHERE APPLICABLE MUST REMAIN WITHIN DIMENSIONS | APPROVED BY M.SASAO | | DATE 2005/10/12 | SHEET NO. 2 OF 2 | | |
| | | THIS DRAWING CONTAINS INFORMATION THAT IS PROPRIETARY TO MOLEX INCORPORATED AND SHOULD NOT BE USED WITHOUT WRITTEN PERMISSION | | | | | A3 |

10 9 8 7 6 5 4 3 2 1

F

E

D

C

B

A

F

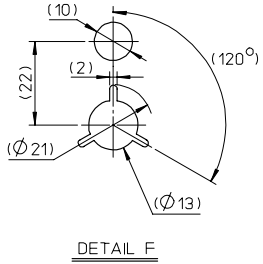
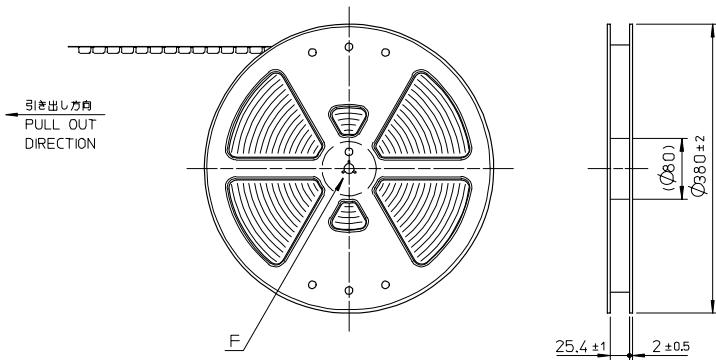
E

D

C

B

A

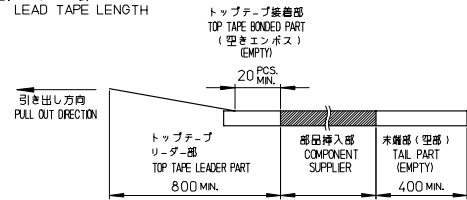


NOTES

1. 製品(501588-0808)の詳細寸法については、
図面番号SD-501588-003をご参照下さい。
IN THE PACKAGE, PART NO. 501588-0808 DETAILED DIMENSIONS,
REFER TO SALES DRAWING NO. SD-501588-003.

2. 梱包数量 : 1400個/リール
NUMBER OF CONNECTORS : 1400 PCS/REEL

3. リードテープ長さ
LEAD TAPE LENGTH



4. トップテープの剥離強度 : 0.1~1.3N (10.2~130gf) (剥離方向は下図参照)
尚、本規格は、出荷時に適用。(但し、輸送時に剥離が発生しない事。)
PEELING OFF FORCE OF TOP TAPE : 0.1~1.3N (10.2~130gf)
(PEELING DIRECTION AS SHOWN IN FOLLOWING FIG.)
THIS REQUIREMENT SHOULD BE APPLIED AT SHIPMENT.
(PEEL OFF SHOULD NOT BE ALLOWED, DURING TRANSPORTATION)



5. 材料

キャリアテープ : ポリスチレン (PS)
トップテープ : PET, PE, PEF
リール : ポリスチレン (PS) <リサイクル材を含む>

MATERIAL
CARRIER TAPE : POLYSTYRENE (PS)
TOP TAPE : PET, PE, PEF
REEL : POLYSTYRENE (PS) <RECYCLE MATERIAL CONTAINED>

| | | | | | | | |
|--|---------------------------------------|--|----------------------------|-----------------------------|---|------------------------|---------------------------|
| RELEASED EC NO: J2006-1158 DRW: SMARUYAMA CHK: CHIKASASAO APPR: HIRATA 2005/10/12 2005/10/12 2005/10/12 | GENERAL TOLERANCES (UNLESS SPECIFIED) | | DIMENSION STYLE MM ONLY | | SCALE --- | DESIGN UNITS METRIC | THIRD ANGLE PROJECTION |
| | 10 UNDER | ±0.2 | DRAWN BY SMARUYAMA | DATE 2005/10/11 | TITLE TFR CARD CONN. EMBOSSED TAPE PACKAGE -LEAD FREE- MOLEX INCORPORATED | | |
| | 10 OVER 30 UNDER | ±0.25 | CHECKED BY M.SASAO | DATE 2005/10/11 | | | |
| | 30 OVER | ±0.3 | APPROVED BY M.SASAO | DATE 2005/10/11 | | | |
| 0 | ANGULAR ±3 ° | DRAFT WHERE APPLICABLE MUST REMAIN WITHIN DIMENSIONS | | MATERIAL NO. 501588-0802 | DOCUMENT NO. SD-501588-004 | SHEET NO. 1 OF 2 | |

9

8

7

6

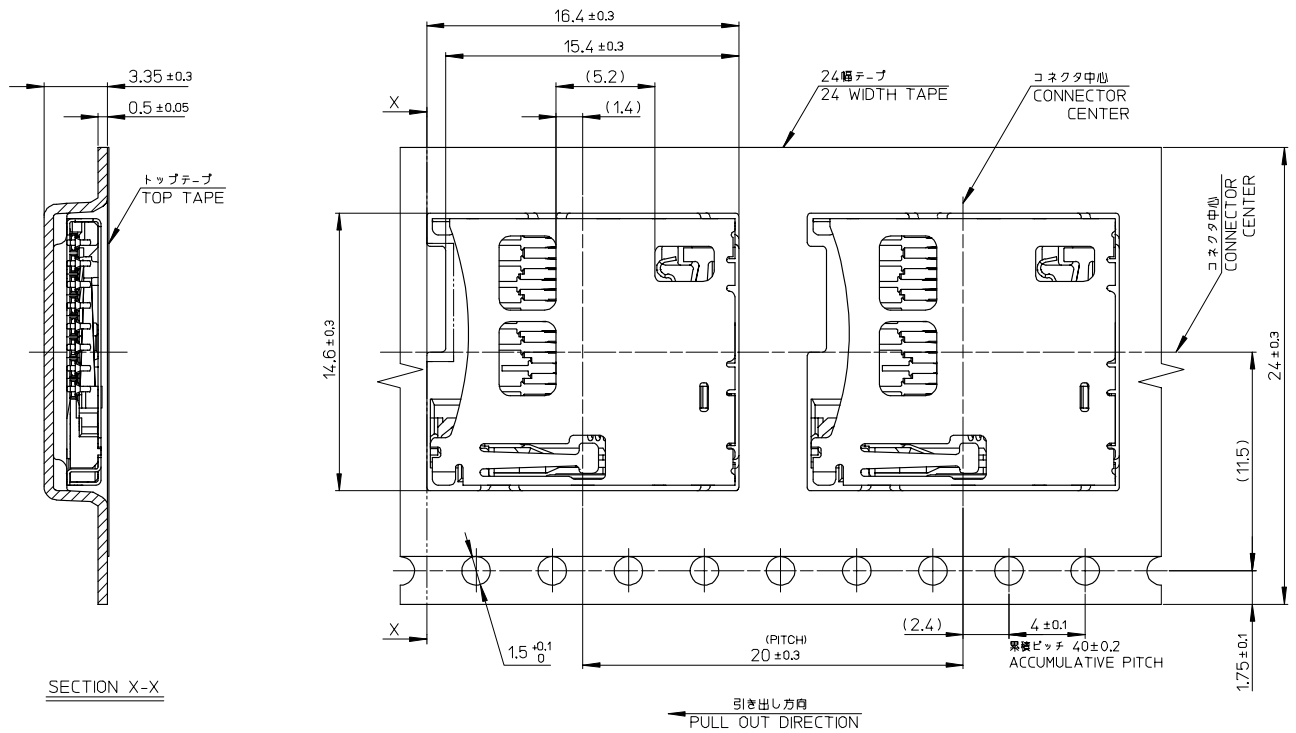
5

4

3

2

EN-02JA(021)



SECTION X-X

| | | | | | | | |
|--|---------------------------------------|------------|--|--------------------|---|------------------------|---------------------------|
| RELEASED EC NO: J2006-1158 DRWN: SMARUYAMA 2005/10/12 CHKD: SASAO 2005/10/12 APPR: HIRATA 2005/10/12 | GENERAL TOLERANCES (UNLESS SPECIFIED) | | DIMENSION STYLE MM ONLY | | SCALE --- | DESIGN UNITS METRIC | THIRD ANGLE PROJECTION |
| | 10 UNDER | ± 0.2 | DRAWN BY SMARUYAMA | DATE 2005/10/11 | TITLE TFR CARD CONN. EMBOSSED TAPE PACKAGE -LEAD FREE- MOLEX INCORPORATED | | |
| | 10 OVER 30 UNDER | ± 0.25 | CHECKED BY M. SASAO | DATE 2005/10/11 | | | |
| | 30 OVER | ± 0.3 | APPROVED BY M. SASAO | DATE 2005/10/11 | | | |
| | ANGULAR | ± 3 ° | MATERIAL NO. 501588-0802 | | DOCUMENT NO. SD-501588-004 | SHEET NO. 2 OF 2 | |
| DRAFT WHERE APPLICABLE MUST REMAIN WITHIN DIMENSIONS | | SIZE A3 | THIS DRAWING CONTAINS INFORMATION THAT IS PROPRIETARY TO MOLEX INCORPORATED AND SHOULD NOT BE USED WITHOUT WRITTEN PERMISSION | | | | |