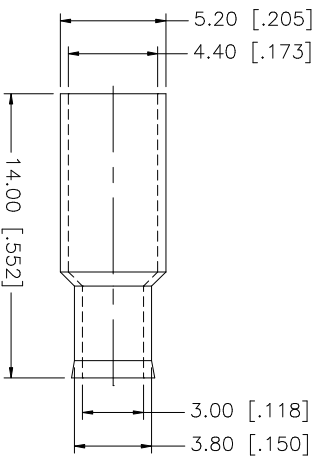
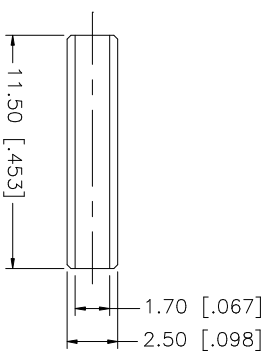
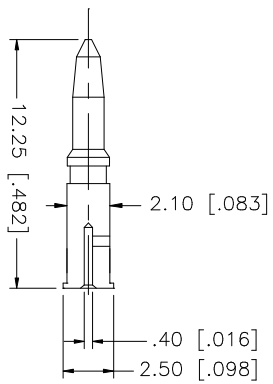
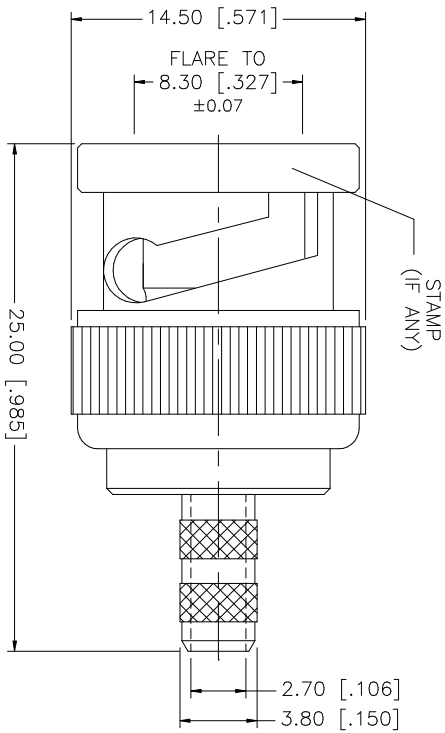
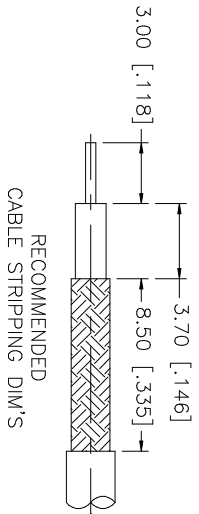


REV.	DATE	DESCRIPTION
A	08/22/98	ADD SLEEVE
B	04/23/02	MODIFY CONTACT PIN AND BODY LENGTH
C	01/06/03	UPDATE DRAWING FORMAT



- CRIMP NOTES:
1. CRIMPED FERRULE
HEX CRIMP SIZE .178"
 2. CRIMPED CONTACT PIN
HEX CRIMP SIZE .068"

10	FERRULE	COPPER	NICKEL	1
9	SLEEVE	DELFIN	NATURAL	1
8	CONTACT PIN	BRASS	GOLD	1
7	WASHER	BRASS	NICKEL	1
6	SPRING	SK5	NICKEL	1
5	RETAINER RING	BRASS	NICKEL	1
4	GASKET	RUBBER	RED	1
3	INSULATOR	DELFIN	NATURAL	1
2	BODY	BRASS	NICKEL	1
1	SHELL	DIE CAST	NICKEL	1
	DESCRIPTION	MATERIAL	FINISH	QTY

UNLESS OTHERWISE SPECIFIED DIMENSIONS ARE IN INCHES AND FOR CUSTOMER REFERENCE ONLY.

UNLESS OTHERWISE SPECIFIED TOLERANCES FOR MILLIMETERS ARE:
0.5 - 8mm ± 0.20mm
8 - 30mm ± 0.40mm
30 - 120mm ± 0.50mm

UNLESS OTHERWISE SPECIFIED TOLERANCES FOR INCHES ARE:
.020 - .315 = ± 0.007"
.315 - 1.180 = ± 0.015"
1.180 - 4.724 = ± 0.020"

DO NOT SCALE DRAWING

APPROVALS	DATE
G.R.S.	01/06/03

CHECKED	
ISSUED	

SHEET	1 OF 1
-------	--------

CAD FILE C:/112/112135.DWG

PART DESCRIPTION
Amphenol Connex
BNC STRAIGHT CRIMP PLUG (RG 179, 187/U CABLE)
PART NO. 112135

DWG. NO. 112135.DWG	REV. C	SIZE A	SCALE NA
---------------------	--------	--------	----------