

4

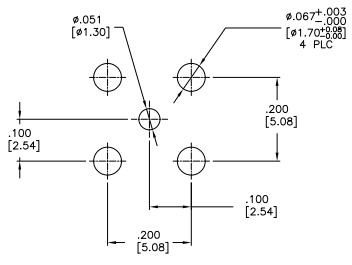
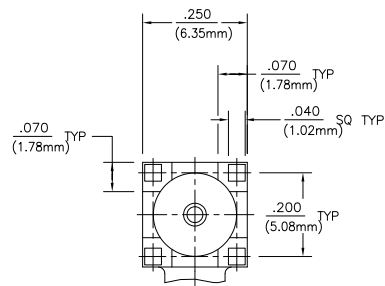
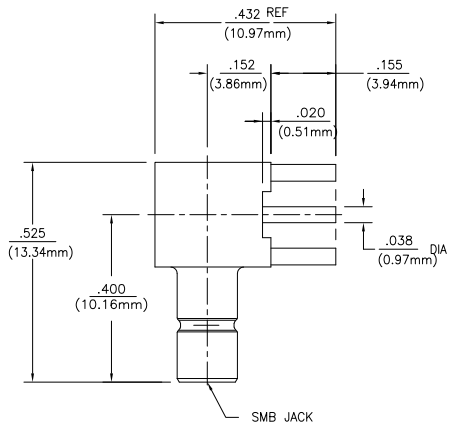
3

2

1

THIS DRAWING IS UNPUBLISHED. RELEASED FOR PUBLICATION
 © COPYRIGHT BY TYCO ELECTRONICS CORPORATION. ALL INTERNATIONAL RIGHTS RESERVED.

LOC	DIST	REVISIONS			
P	LTR	DESCRIPTION	DATE	BY	APPD
AJ	16				
D		REV PER ECO 08-031174	30DEC2008	DW	JL



RECOMMENDED PCB LAYOUT

1060464-1		
PART NUMBER		
HOUSING, CAP & CENTER CONTACT	BRASS PER ASTM-B-16, HALF HARD	GOLD PLATE PER MIL-G-45204
DIELECTRIC	PTFE FLUOROCARBON PER ASTM-D-1457	N/A
COMPONENT	MATERIAL	FINISH

THIS DRAWING IS A CONTROLLED DOCUMENT.		BY J. HAVENER 25JUL2002	Tyco Electronics Corporation Harrisburg, PA 17105-3608	
DIMENSIONS: INCHES (mm)		CHK J. HAVENER 25JUL2002	NAME K. WEIDNER	
TOLERANCES UNLESS OTHERWISE SPECIFIED:		APPD J. HAVENER 25JUL2002	PRODUCT SPEC	
Ø PLC	F	APPLICATION SPEC		
Ø PLC	F	SIZE CASE CODE DRAWING NO		
Ø PLC	F	HEIGHT		
Ø PLC	F	RESTRICTED TO		
Ø PLC	F	CUSTOMER DRAWING		
MATERIAL	SEE TABLE	FINISH	SEE TABLE	SCALE 6:1 SHEET 1 of 1 REV D

1060464-1

A