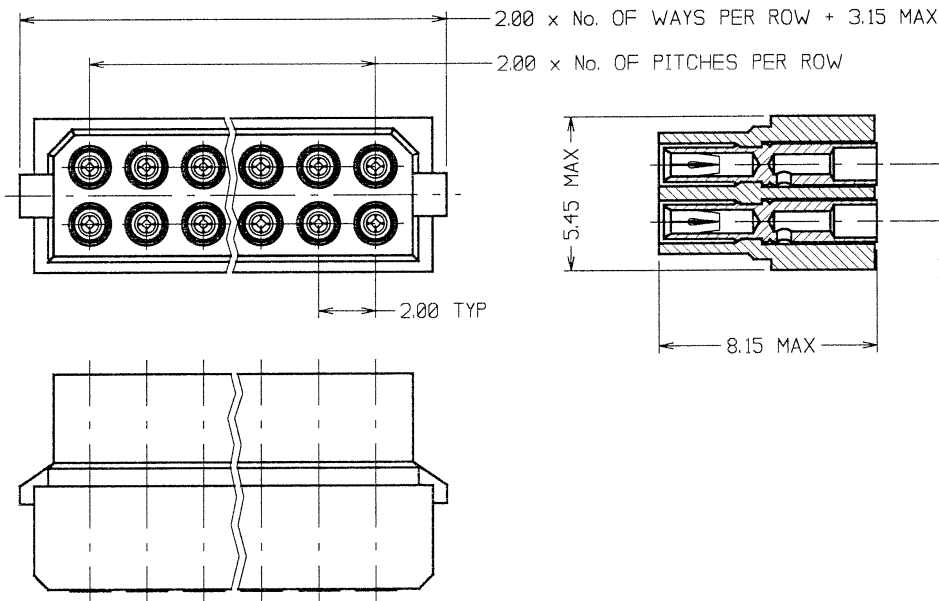


# Customer Information Sheet

DRAWING No.: M80-613XXXX SHEET 2 OF 2 IF IN DOUBT - ASK (C) NOT TO SCALE THIRD ANGLE PROJECTION ALL DIMENSIONS IN mm



**SPECIFICATIONS:**  
**MATERIAL:**  
 MOULDING - HIGH TEMPERATURE POLYAMIDE 46, UL94V-0, BLACK  
 CLIP - BERYLLIUM COPPER  
 SHELL - BRASS  
**FINISH:**  
**CONTACTS:**  
 42 - 0.30µ GOLD CLIP, 4.0µ 100% TIN SHELL  
 45 - 0.30µ GOLD CLIP, 0.28µ GOLD SHELL  
**ELECTRICAL:**  
 CURRENT RATING AT 25°C = 30A MAX  
 CURRENT RATING AT 85°C = 2.2A MAX  
 WORKING VOLTAGE = 120V AC/DC  
 VOLTAGE PROOF = 360V AC/DC  
 CONTACT RESISTANCE (INITIAL) = 20 MILLIOHMS MAX  
 CONTACT RESISTANCE (AFTER CONDITIONING) = 25 MILLIOHMS MAX  
 INSULATION RESISTANCE (INITIAL) = 1000 MEGOHMS MIN  
 INSULATION RESISTANCE (AFTER CONDITIONING) = 100 MEGOHMS MIN  
**ENVIRONMENTAL:**  
 TEMPERATURE RANGE = -55°C TO +125°C  
**MECHANICAL:**  
 DURABILITY = 500 OPERATIONS  
 INSERTION FORCE = 2.8N MAX, 1.0N MIN  
 WITHDRAWAL FORCE = 1.8N MAX, 0.2N MIN  
**PACKING:**  
 BAG (CONTACTS AND MOULDINGS UN-ASSEMBLED)  
 FOR COMPLETE SPECIFICATION, SEE COMPONENT SPECIFICATION C005XX (LATEST ISSUE)

- NOTES:**
1. RECOMMENDED WIRE TYPE = BS3G210 TYPE A, PTFE INSULATED 22 AWG. MAX INSULATION DIA = Ø1.10mm. STRIP WIRE BY 2.0mm
  2. RECOMMENDED HAND CRIMP TOOL = M22520/2-01 WITH POSITIONER T5747 ALSO AVAILABLE; PNEUMATIC AND ELECTRICAL CRIMP MACHINES.
  3. CONTACT INSERTION & EXTRACTION TOOL = Z80-280
  4. REFER TO INSTRUCTION SHEET FOR HAND CRIMP TOOL M22520/2-01 FOR COMPLETE CRIMPING INSTRUCTIONS.

ORDER CODE:  
**M80-613XXXX**

TOTAL No. OF WAYS \_\_\_\_\_  
 04, 06, 08, 10, 12, 14, 16,  
 18, 20, 26, 34

FINISH \_\_\_\_\_  
 42 - GOLD CLIP, 100% TIN SHELL  
 45 - GOLD CLIP, GOLD SHELL

JMB	2	22.11.05	8874
NAME	ISS.	DATE	C/NOTE
APPROVED:	PDC		
CHECKED:	BMK		
DRAWN:	I. SANDY		
CUSTOMER REF.:			
ASSEMBLY DRG:			

<b>HARWIN</b>			THIS DRAWING AND ANY INFORMATION OR DESCRIPTIVE MATTER SET OUT HEREON ARE CONFIDENTIAL AND COPYRIGHT PROPERTY OF THE HARWIN GROUP AND MUST NOT BE DISCLOSED, LOANED, COPIED OR USED FOR MANUFACTURING, TENDERING OR FOR ANY OTHER PURPOSE WITHOUT THEIR WRITTEN PERMISSION.	TOLERANCES X. = ±1mm X.X = ±0.25mm X.XX = ±0.10mm X.XXX = ±0.01mm ANGLES = ±5° UNLESS STATED	MATERIAL: SEE ABOVE	TITLE: DATAMATE 2mm PITCH CRIMP DIL SOCKET ASSEMBLY LARGE BORE (22 AWG)
HARWIN USA TEL: 603 893 5376 FAX: 603 893 5396 mis@harwin.com	HARWIN Europe (UK) TEL: 023 9231 4545 FAX: 023 9231 4590 mis@harwin.co.uk	HARWIN Asia TEL: +65 6 779 4909 FAX: +65 6 779 3868 mis@harwin.com.sg			FINISH: SEE ABOVE	DRAWING NUMBER: <b>M80-613XXXX</b>