

Customer Information Sheet

DRAWING No.: M40-620XXXXR

SHEET 3 OF 4

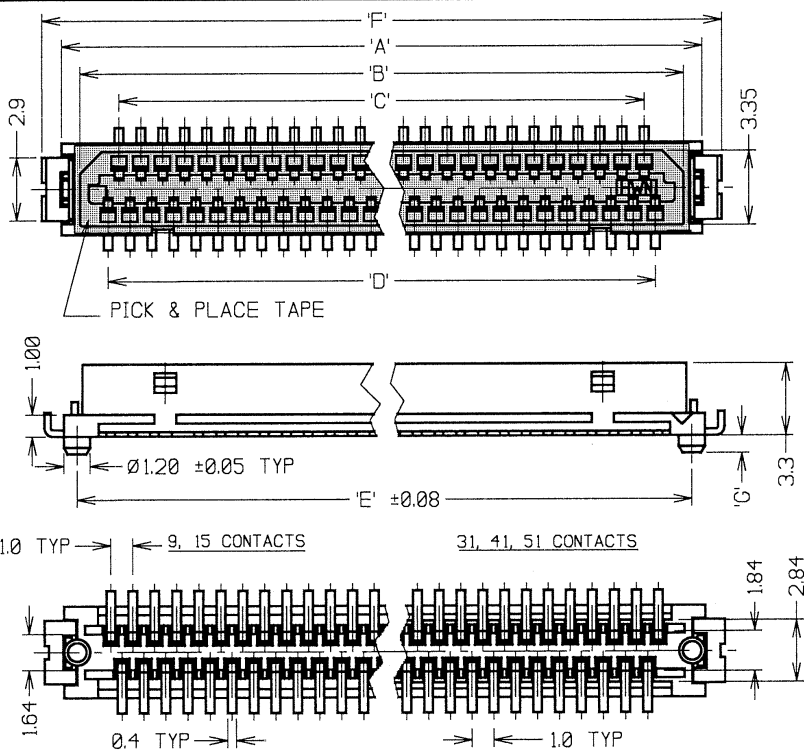
IF IN DOUBT - ASK

(C)

NOT TO SCALE

THIRD ANGLE PROJECTION

ALL DIMENSIONS IN mm



PART No.	No. OF CONTACTS	'A'	'B'	'C'	'D'	'E'	'F'	'G'
M40-62009XXR	9	8.3	6.5	3.0	4.0	7.1	10.1	1.0
M40-62015XXR	15	11.3	9.5	6.0	7.0	10.1	13.1	1.0
M40-62021XXR	21	14.3	12.5	9.0	10.0	13.1	16.1	1.0
M40-62025XXR	25	16.3	14.5	11.0	12.0	15.1	18.1	1.0
M40-62031XXR	31	19.3	17.5	14.0	15.0	18.1	21.1	0.8
M40-62041XXR	41	24.3	22.5	19.0	20.0	23.1	26.1	0.8
M40-62051XXR	51	29.3	27.5	24.0	25.0	28.1	31.1	0.8

SPECIFICATIONS:

MATERIAL:

MOULDING = PA UL94V-0 (NATURAL)

CONTACTS = PHOSPHOR BRONZE

RETAINER = BRASS

FINISH:

CONTACTS = 1-2μ 100% REFLOW TIN

RETAINER = 2-6μ 100% MATTE TIN OVER 1.27μ MIN NICKEL

ELECTRICAL:

CURRENT RATING = 0.5 AMPS

VOLTAGE RATING = 100V AC

DIELECTRIC STRENGTH = 250V AC FOR 1 MINUTE

INSULATION RESISTANCE = 500 MEGOHMS MIN (100V DC)

CONTACT RESISTANCE = 50 MILLIOHMS MAX (0.1A DC)

MECHANICAL:

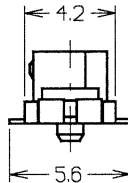
DURABILITY = 30 CYCLES

ENVIRONMENTAL:

TEMPERATURE RANGE = -55°C TO +85°C

FOR COMPLETE SPECIFICATIONS, SEE COMPONENT

SPECIFICATION C026XX (LATEST ISSUE)



NOTES:

1. MATES WITH M40-600XXXX TO GIVE 4.3mm BOARD-TO-BOARD HEIGHT.
2. ALL TOLERANCES ARE ±0.30 UNLESS OTHERWISE STATED.
3. SEE M40-620XXXX FOR NON-TAPE & REEL PRODUCT.
4. SUPPLIED WITH HIGH TEMPERATURE TAPE FOR PICK AND PLACE.
5. SEE SHEET 4 FOR TAPE AND REELING DETAILS.

ORDER CODE:

M40-620XX46R

No. OF WAYS:

09, 15, 21, 25,
31, 41, 51

FINISH:

46 = 100% TIN

JMB 7 22.06.06 9282

NAME ISS. DATE C/NOTE

APPROVED: *[Signature]*

CHECKED: *[Signature]*

DRAWN: W. J. BOURNE

CUSTOMER REF.:

ASSEMBLY DRG.:

HARWIN

HARWIN USA
TEL: 603 893 5376
FAX: 603 893 5396
mis@harwin.com

HARWIN Europe (UK)
TEL: 023 9231 4545
FAX: 023 9231 4590
mis@harwin.co.uk

HARWIN Asia
TEL: +65 6 779 4909
FAX: +65 6 779 3868
mis@harwin.com.sg

THIS DRAWING AND ANY INFORMATION OR DESCRIPTIVE MATTER SET OUT HEREON ARE CONFIDENTIAL AND COPYRIGHT PROPERTY OF THE HARWIN GROUP AND MUST NOT BE DISCLOSED, LOANED, COPIED OR USED FOR MANUFACTURING, TENDERING OR FOR ANY OTHER PURPOSE WITHOUT THEIR WRITTEN PERMISSION

TOLERANCES
X. = ±1mm
X.X = ±0.25mm
X.XX = ±0.10mm
X.XXX = ±0.01mm
ANGLES = ±5°
UNLESS STATED

MATERIAL:

SEE ABOVE

FINISH:

SEE ABOVE

S/AREA:

mm²

TITLE: 1.00mm PITCH SMT SOCKET CONNECTOR (WITH PICK & PLACE, TAPE & REELED)

DRAWING NUMBER:

M40-620XXXXR

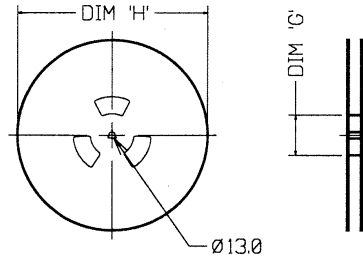
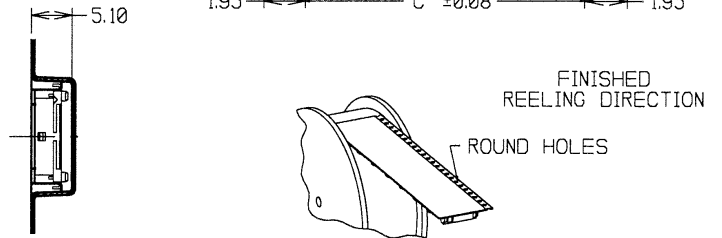
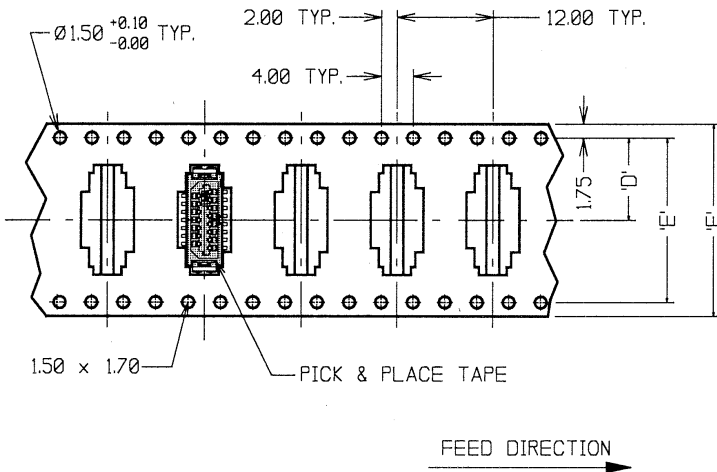
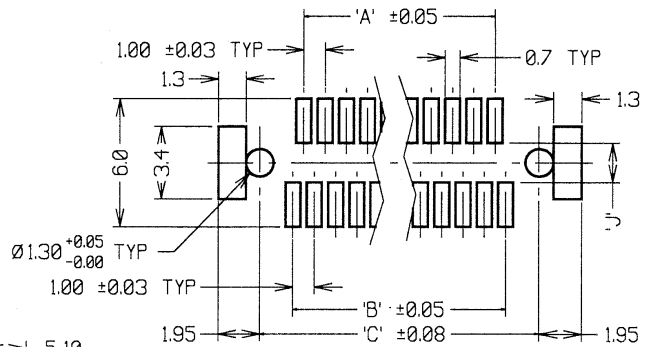
SHT
3
OF
4

Customer Information Sheet

DRAWING No.: M40-620XXXXR SHEET 4 OF 4 IF IN DOUBT - ASK © NOT TO SCALE THIRD ANGLE PROJECTION ALL DIMENSIONS IN mm

ASSEMBLY PART No.	DIM 'A'	DIM 'B'	DIM 'C'	DIM 'D'	DIM 'E'	DIM 'F'	DIM 'G'	DIM 'H'
M40-60009XXR	3.0	4.0	7.1	11.5	24.0	24.0	Ø80	Ø380
M40-60015XXR	6.0	7.0	10.1					Ø330
M40-60021XXR	9.0	10.0	13.1	14.2	28.4	32.0	Ø80	Ø380
M40-60025XXR	11.0	12.0	15.1					Ø380
M40-60031XXR	14.0	15.0	18.1					Ø380
M40-60041XXR	19.0	20.0	23.1	20.2	40.4	44.0	Ø80	Ø380
M40-60051XXR	24.0	25.0	28.1					Ø380

RECOMMENDED PAD LAYOUT



JMB	7	22.06.06	9282
NAME	ISS.	DATE	C/NOTE
APPROVED: <i>J.B.</i>			
CHECKED: <i>M. J. Bourne</i>			
DRAWN: W. J. BOURNE			
CUSTOMER REF.:			
ASSEMBLY DRG:			

NOTES:

- FOR CONNECTOR DIMENSIONS SEE SHEET 3.
- THIS PRODUCT IS TAPED AND REELED IN ACCORDANCE WITH EIA-481 (ELECTRONIC INDUSTRIES ASSOCIATION).
- QUANTITY PER REEL = 1,000 COMPONENTS.

HARWIN

HARWIN USA TEL: 603 893 5376 FAX: 603 893 5396 mis@harwin.com	HARWIN Europe (UK) TEL: 023 9231 4545 FAX: 023 9231 4590 mis@harwin.co.uk	HARWIN Asia TEL: +65 6 779 4909 FAX: +65 6 779 3868 mis@harwin.com.sg
--	--	--

THIS DRAWING AND ANY INFORMATION OR DESCRIPTIVE MATTER SET OUT HEREON ARE CONFIDENTIAL AND COPYRIGHT PROPERTY OF THE HARWIN GROUP AND MUST NOT BE DISCLOSED, LOANED, COPIED OR USED FOR MANUFACTURING, TENDERING OR FOR ANY OTHER PURPOSE WITHOUT THEIR WRITTEN PERMISSION.

TOLERANCES
 X. - ±1mm
 X.X - ±0.25mm
 X.XX - ±0.10mm
 X.XXX - ±0.01mm
 ANGLES = ±5°
 UNLESS STATED

MATERIAL: SEE ABOVE
 FINISH: SEE ABOVE
 S/AREA: mm²

TITLE: 1.00mm PITCH SMT SOCKET CONNECTOR (WITH PICK & PLACE, TAPE AND REELED)
 DRAWING NUMBER: M40-620XXXXR
 SHT 4 OF 4