

DRAWING No.: M40-302 XX 46R

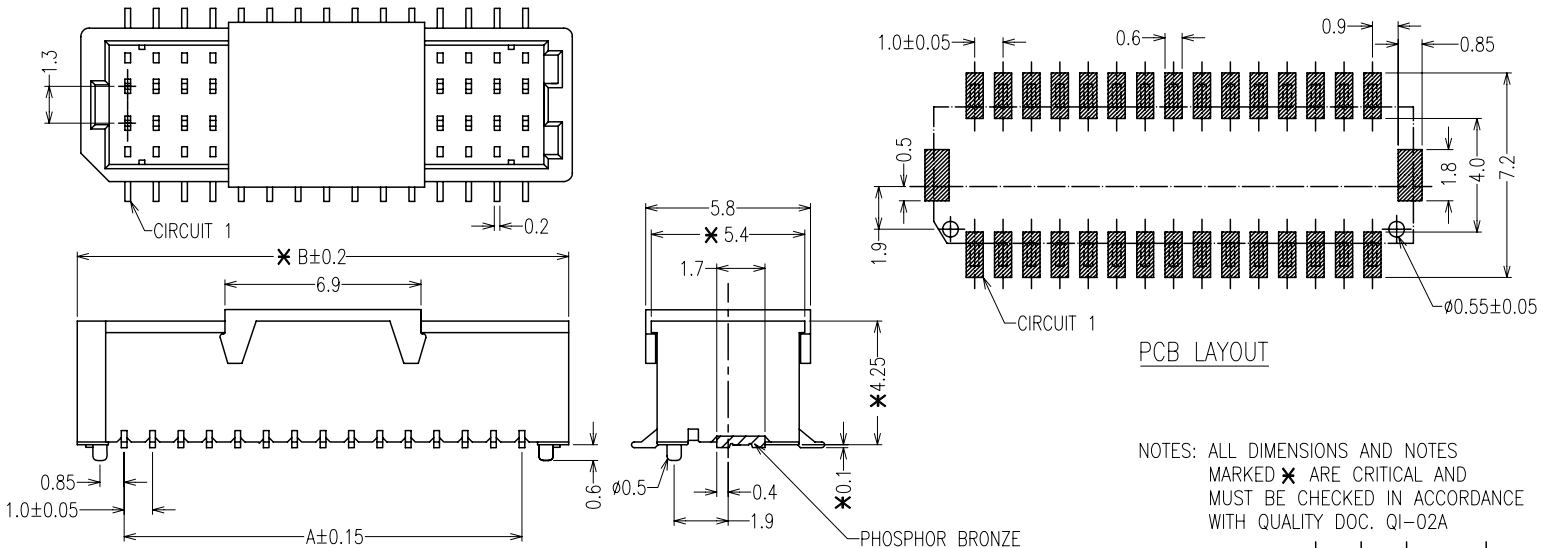
IF IN DOUBT - ASK

©

NOT TO SCALE

THIRD ANGLE PROJECTION

ALL DIMENSIONS IN mm



NOTES: ALL DIMENSIONS AND NOTES MARKED * ARE CRITICAL AND MUST BE CHECKED IN ACCORDANCE WITH QUALITY DOC. QI-02A

SPECIFICATIONS:
 MATERIAL:-
 MOULDING: NYLON 9T, UL94V-0
 CONTACT: PHOSPHOR BRONZE, T=0.2MM
 FINISH:-
 TIN (SEMI GLOSS)
 ELECTRICAL:-
 CURRENT RATING: 1A AC/DC
 WORKING VOLTAGE: 50V AC/DC
 WITHSTANDING VOLTAGE: 500V AC/MINUTE
 CONTACT RESISTANCE: 20 mΩ MAX.
 INSULATION RESISTANCE: 100 MΩ MIN.
 ENVIRONMENTAL:-
 TEMPERATURE RANGE: -25°C TO +85°C

*NOTE: FOR WAYS WITH *PLEASE CHECK WITH TECHNICAL SALES FOR AVAILABILITY

NO. OF WAYS PER ROW	PART NO	DIM (MM)	
		A	B
5	M40-3020546R	4.00	7.30
*6	M40-3020646R	5.00	8.30
*7	M40-3020746R	6.00	9.30
*8	M40-3020846R	7.00	10.30
*9	M40-3020946R	8.00	11.30
10	M40-3021046R	9.00	12.30
15	M40-3021546R	14.00	17.30

*NOTE: REMOVE R FOR LOOSE BAG PACKING

ORDER CODE
M40-302 XX 46R
 NO. OF WAYS: [] WITH R: REEL PACKING
 WITHOUT R: LOOSE BAG PACKING
 (10pcs Per Strip, 10 Strips per Bag)

NAME	ISS.	DATE	C/NOTE
Allan	7	28.07.09	A225
Allan	6	06.10.08	A166
Allan	5	25.06.08	A136
Allan	4	25.06.08	A132
Allan	3	19.06.08	A130
Allan	2	29.06.07	A056
Allan	1	01.08.06	-

APPROVED:	<i>Ben</i>
CHECKED:	
DRAWN:	Allan
CUSTOMER REF.:	
ASSEMBLY DRG:	

HARWIN

HARWIN USA
 TEL: 603 893 5376
 FAX: 603 893 5396
 mis@harwin.com

HARWIN Europe (UK)
 TEL: 023 9231 4545
 FAX: 023 9231 4590
 mis@harwin.co.uk

HARWIN Asia
 TEL: +65 6 779 4909
 FAX: +65 6 779 3868
 mis@harwin.com.sg

THIS DRAWING AND ANY INFORMATION OR DESCRIPTIVE MATTER SET OUT HEREON ARE CONFIDENTIAL AND COPYRIGHT PROPERTY OF THE HARWIN GROUP AND MUST NOT BE DISCLOSED, LOANED, COPIED OR USED FOR MANUFACTURING, TENDERING OR FOR ANY OTHER PURPOSE WITHOUT THEIR WRITTEN PERMISSION.

TOLERANCES
 X. = ±1mm
 X.X = ±0.25mm
 X.XX = ±0.15mm
 X.XXX = ±0.08mm
 ANGLES = ±5°
 UNLESS STATED

MATERIAL: SEE NOTES
 FINISH: SEE NOTES
 S/AREA: mm²

TITLE: WAFER 1.00MM DIL SMT TYPE

DRAWING NUMBER: M40-302 XX 46R

SHT 1 OF 1