

DRAWING No.: M30-3000046

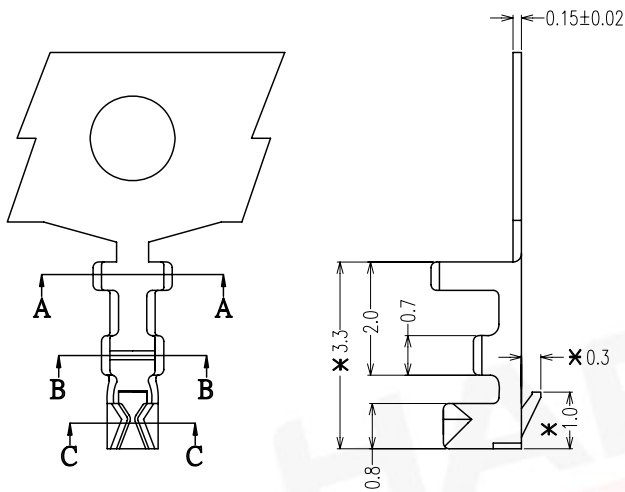
IF IN DOUBT - ASK

©

NOT TO SCALE

THIRD ANGLE PROJECTION

ALL DIMENSIONS IN mm



SPECIFICATIONS:

MATERIAL:-
PHOSPHOR BRONZEFINISH:-
TIN PLATED

ELECTRICAL:-

CURRENT RATING: 1A AC/DC

WORKING VOLTAGE: 100V AC/DC

WITHSTAND VOLTAGE: 500V AC/MINUTE

CONTACT RESISTANCE: 20 mΩ MIN.

INSULATION RESISTANCE: 1000 MΩ MIN.

ENVIRONMENTAL:-

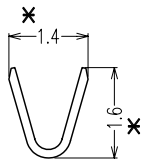
TEMPERATURE RANGE: -25°C TO +85°C

OTHERS:-

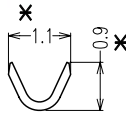
APPLICABLE WIRE: AWG #28 TO #32

INSULATION OD: 0.90MM MAX.

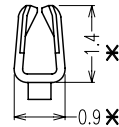
ACCEPTS: M30-130 XX 00 HOUSING

NOTES: ALL DIMENSIONS AND NOTES
MARKED * ARE CRITICAL AND
MUST BE CHECKED IN ACCORDANCE
WITH QUALITY DOC. QI-02A

SEC: A-A



SEC: B-B



SEC: C-C

Allan HTUT	2 1	02.07.08 14.02.07	A139 -
NAME	ISS.	DATE	C/NOTE
APPROVED:	_____		
CHECKED:	_____ <i>Boon</i>		
DRAWN:	Allan		
CUSTOMER REF.:	_____		
ASSEMBLY DRG.:	_____		

HARWINHARWIN USA
TEL: 603 893 5376
FAX: 603 893 5396
mis@harwin.comHARWIN Europe (UK)
TEL: 023 9231 4545
FAX: 023 9231 4590
mis@harwin.co.ukHARWIN Asia
TEL: +65 6 779 4909
FAX: +65 6 779 3868
mis@harwin.com.sgTHIS DRAWING AND ANY
INFORMATION OR DESCRIPTIVE
MATTER SET OUT HEREON ARE
CONFIDENTIAL AND COPYRIGHT
PROPERTY OF THE HARWIN
GROUP AND MUST NOT BE
DISCLOSED, LOANED, COPIED
OR USED FOR MANUFACTURING,
TENDERING OR FOR ANY
OTHER PURPOSE WITHOUT
THEIR WRITTEN PERMISSION.TOLERANCES
X. = ±1mm
X.X = ±0.25mm
X.XX = ±0.15mm
X.XXX = ±0.08mm
ANGLES = ±5°
UNLESS STATEDMATERIAL:
SEE NOTES

FINISH: SEE NOTES

S/AREA: mm²TITLE:
1.25MM PITCH CRIMP TERMINALDRAWING NUMBER:
M30-3000046SHT
1
OF
1