

Customer Information Sheet

DRAWING No.: M22-532XXXXR

SHEET 3 OF 4

IF IN DOUBT - ASK

©

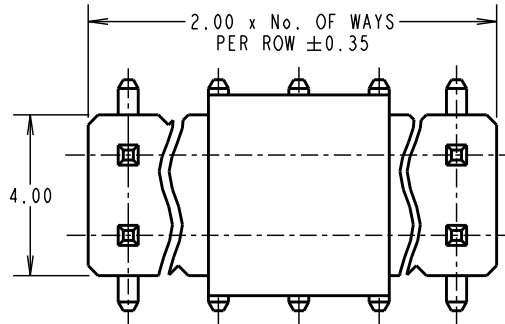
NOT TO SCALE

THIRD ANGLE PROJECTION

ALL DIMENSIONS IN mm

SPECIFICATIONS:

MATERIAL:
 MOULDING, PICK & PLACE CAP = NYLON 6T, UL94V-0, BLACK
 CONTACTS = PHOSPHOR BRONZE
FINISH:
 05 = GOLD
 46 = 100% TIN, OVER NICKEL
ELECTRICAL:
 CURRENT RATING = 1A
 CONTACT RESISTANCE = 20 mΩ MAX (GOLD), 30 mΩ MAX (TIN)
 INSULATION RESISTANCE = 100 MΩ MIN
MECHANICAL:
 DURABILITY = 300 OPERATIONS (GOLD), 50 OPERATIONS (TIN)
 DIELECTRIC STRENGTH = 650V AC/DC
ENVIRONMENTAL:
 TEMPERATURE RANGE = -40°C TO +105°C
 FOR COMPLETE SPECIFICATION, SEE COMPONENT SPECIFICATION C018XX (LATEST ISSUE)



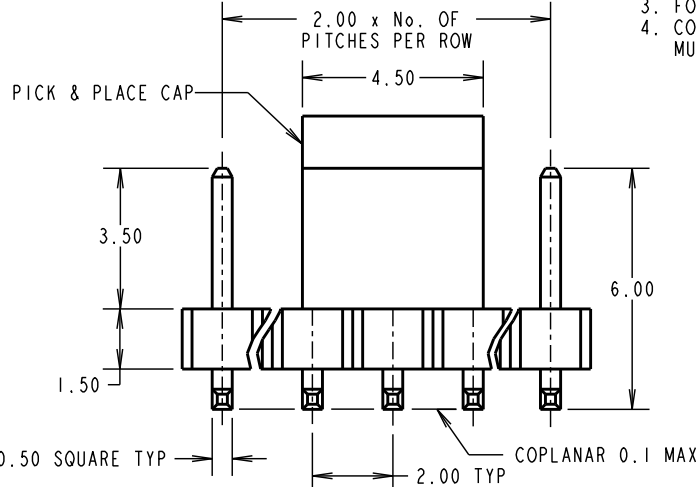
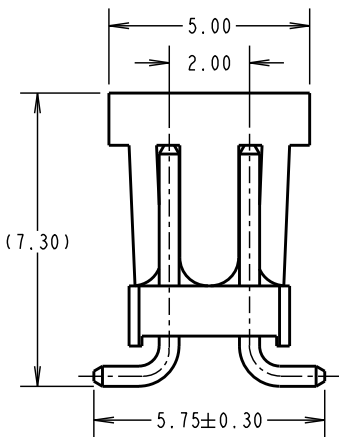
ORDER CODE:

M22-532XXXXR

No. OF WAYS PER ROW
 02, 03, 05, 07, 08, 09,
 10, 11
 FINISH:
 05 - GOLD
 46 - 100% TIN, OVER NICKEL

NOTES:

1. ALL TOLERANCES ARE ±0.25 UNLESS OTHERWISE STATED.
2. SEE DRAWING M22-532XXXXP FOR PICK AND PLACE VERSION, M22-532XXXX FOR STANDARD PRODUCT.
3. FOR TAPE & REEL DETAILS, SEE SHEET 4.
4. CO-PLANARITY: FLATNESS OF SMT TAILS MUST NOT EXCEED 0.1mm.



| | | | |
|-----------------------|------|----------|--------|
| RA | 11 | 24.08.10 | 10904 |
| NAME | ISS. | DATE | C/NOTE |
| APPROVED: R. ADDE | | | |
| CHECKED: M.G. PLESTED | | | |
| DRAWN: J. KEIR | | | |
| CUSTOMER REF.: | | | |
| ASSEMBLY DRG: | | | |

HARWIN

HARWIN USA
 TEL: 603 893 5376
 FAX: 603 893 5396
 mis@harwin.com

HARWIN Europe (UK)
 TEL: 023 9231 4545
 FAX: 023 9231 4590
 mis@harwin.co.uk

HARWIN Asia
 TEL: +65 6 779 4909
 FAX: +65 6 779 3868
 mis@harwin.com.sg

THIS DRAWING AND ANY INFORMATION OR DESCRIPTIVE MATTER SET OUT HEREON ARE CONFIDENTIAL AND COPYRIGHT PROPERTY OF THE HARWIN GROUP AND MUST NOT BE DISCLOSED, LOANED, COPIED OR USED FOR MANUFACTURING, TENDERING OR FOR ANY OTHER PURPOSE WITHOUT THEIR WRITTEN PERMISSION.

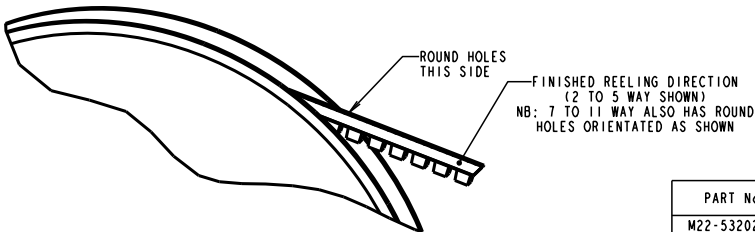
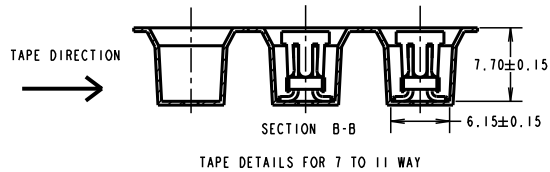
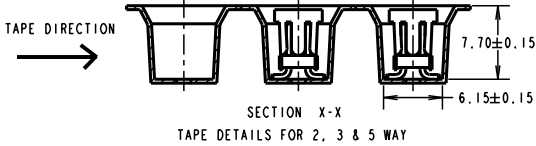
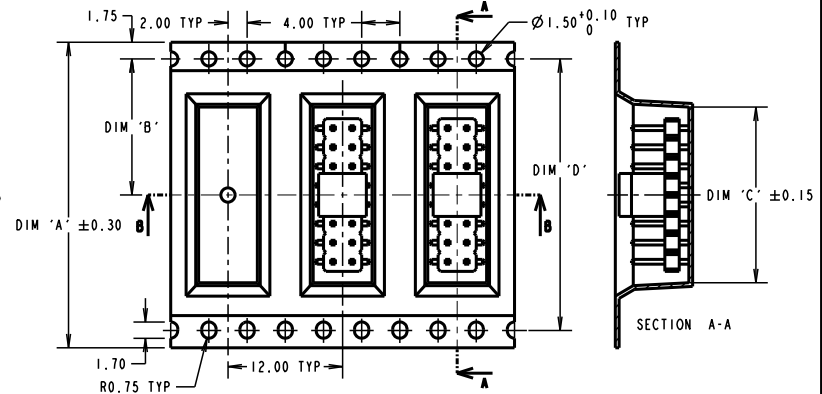
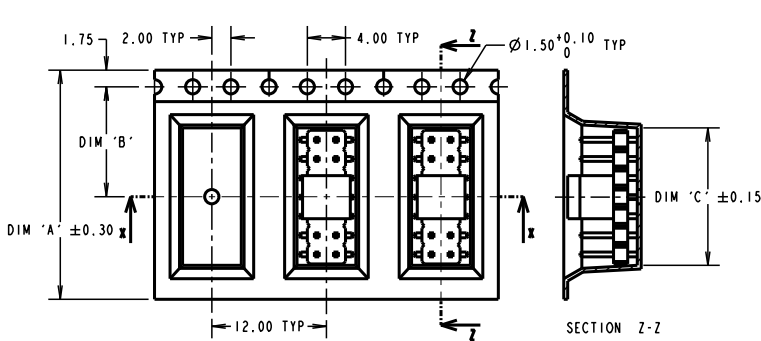
TOLERANCES
~~X = ±1mm~~
~~X.X = ±0.25mm~~
~~X.XX = ±0.10mm~~
~~X.XXX = ±0.05mm~~
 ANGLES = ±5°
 UNLESS STATED

MATERIAL:
 SEE ABOVE
FINISH:
 SEE ABOVE
S/AREA:
 mm²

TITLE: 2.00mm PITCH DIL SMT PIN HEADER ASSEMBLY (WITH P/PLACE CAP, T/REEL)
DRAWING NUMBER: M22-532XXXXR
 SHT 3 OF 4

Customer Information Sheet

DRAWING No.: M22-532XXXXR SHEET 4 OF 4 IF IN DOUBT - ASK (C) NOT TO SCALE THIRD ANGLE PROJECTION ALL DIMENSIONS IN mm



| PART No. | DIM 'A' | DIM 'B' | DIM 'C' | DIM 'D' |
|--------------|---------|---------|---------|---------|
| M22-53202XXR | 16.00 | 7.50 | 4.20 | N/A |
| M22-53203XXR | 16.00 | 7.50 | 6.20 | N/A |
| M22-53205XXR | 24.00 | 11.50 | 10.20 | N/A |
| M22-53207XXR | 32.00 | 14.20 | 14.40 | 28.40 |
| M22-53208XXR | 32.00 | 14.20 | 16.40 | 28.40 |
| M22-53209XXR | 32.00 | 14.20 | 18.40 | 28.40 |
| M22-53210XXR | 44.00 | 20.20 | 20.40 | 40.40 |
| M22-53211XXR | 44.00 | 20.20 | 22.40 | 40.40 |

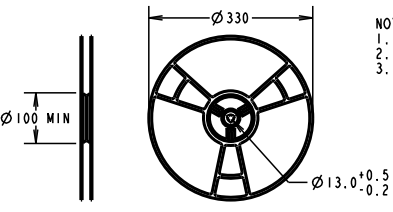
ORDER CODE:
M22-532XXXXR

No. OF WAYS PER ROW: 02, 03, 05, 07, 08, 09, 10, 11

FINISH:
05 - GOLD
46 - 100% TIN

| | | | |
|----------------|-----|--------------|--------|
| RA | 11 | 24.08.10 | 10904 |
| NAME | ISS | DATE | C/NOTE |
| APPROVED: | | B. ADDE | |
| CHECKED: | | M.G. PLESTED | |
| DRAWN: | | J. KEIR | |
| CUSTOMER REF.: | | | |
| ASSEMBLY DRG: | | | |

- NOTES:
1. QUANTITY PER REEL = 700 PIECES.
 2. FOR CONNECTOR DETAILS, SEE SHEET 3.
 3. SEE DRAWING M22-532XXXXP FOR PICK & PLACE VERSION & M22-532XXXX FOR STANDARD PRODUCT.



| | | | | | | |
|--|--|--|--|---|--|--|
| HARWIN | | | <small>THIS DRAWING AND ANY INFORMATION OR DESCRIPTIVE MATTER SET OUT HEREON ARE CONFIDENTIAL AND COPYRIGHT PROPERTY OF THE HARWIN GROUP AND MUST NOT BE DISCLOSED, LOANED, COPIED OR USED FOR MANUFACTURING, TENDERING OR FOR ANY OTHER PURPOSE WITHOUT THEIR WRITTEN PERMISSION.</small> | TOLERANCES X. = ±1mm X.X = ±0.25mm X.XX = ±0.10mm X.XXX = ±0.01mm ANGLES: ±2° UNLESS STATED | MATERIAL: SEE ABOVE | TITLE: 2.00mm PITCH DIL SMT PIN HEADER ASSEMBLY (WITH P/PLACE CAP, T/REEL) |
| HARWIN USA TEL: 603 893 5376 FAX: 603 893 5396 mis@horwin.com | HARWIN Europe (UK) TEL: 023 9231 4545 FAX: 023 9231 4590 mis@horwin.co.uk | HARWIN Asia TEL: +65 6 779 4909 FAX: +65 6 779 3868 mis@horwin.com.sg | | FINISH: SEE ABOVE S/AREA: mm² | DRAWING NUMBER: M22-532XXXXR | SHT 4 OF 4 |