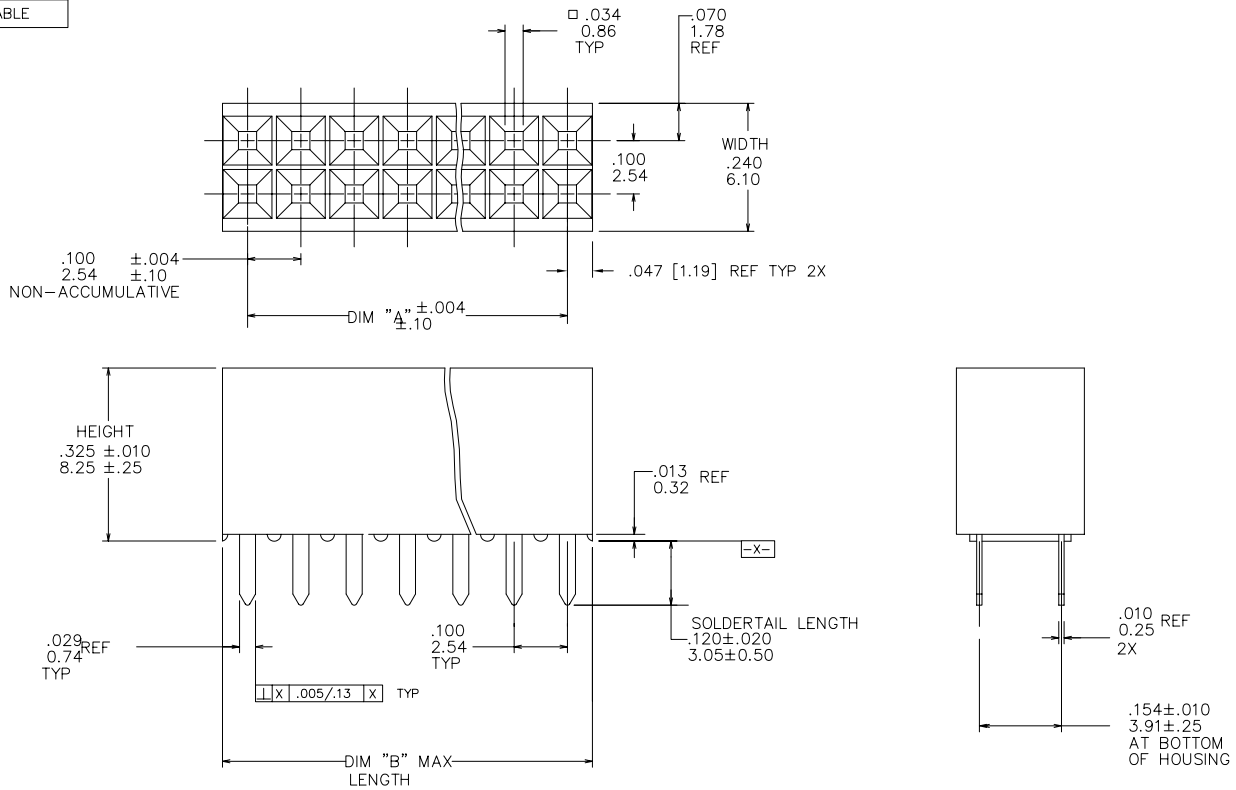


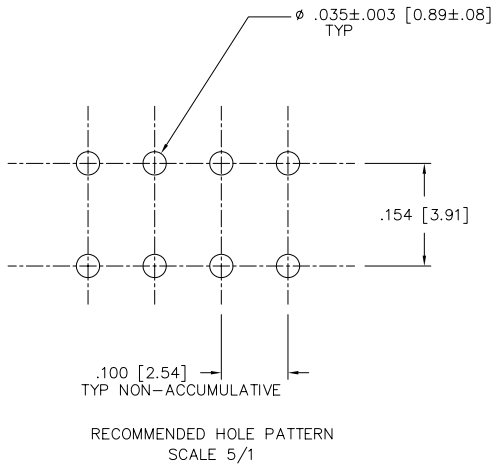
PRODUCT NUMBER  
SEE TABLE



mat'l. code		surface	tolerance	projection	product family
ISO 1302		ISO 1302	ISO 406	ISO 1101	CARD CONN
tolerances unless otherwise specified				INCH/MM	title
ltr	ecr	no	dr	date	VERT. CARD CONNECTOR
D	V23244	MRC	9/30/92		.154/3.91 CTR., DBL ROW
E	V70080	MDF	2/24/96		scale 4:1
F	M05-0216	ERE	10/11/05		FCJ
G	M06-0210	MHT	6/03/06		dwg no 65936 sheet 1 of 3 size A3
dr		M. CORNMAN	9/30/92	type Product Customer Drawing	
enrg		W. NORTHEY	9/30/92		
chr		C. GINGRICH	9/30/92		
appd		W. NORTHEY	9/30/92		
sheet	revision	G	G	G	
index	sheet	1	2	3	

PDM: Rev:G STATUS:Released Printed: Oct 13, 2010

PRODUCT NUMBER  
SEE TABLE



NOTES:

- ① HOUSING MAT'L: FILLED POLYESTER, FLAME RETARDANT PER UL 94V-0. COLOR : BLACK.
- ② TERMINAL MATERIAL AND PLATING:  
BODY: BRASS .010/0.25 THICK  
SPRING: Be-Cu, HEAT TREATED  
BODY PLATING: 15u"/.38u Au OVER 50u"/1.27u Ni IN CONTACT AREA.  
SPRING PLATING: Au FLASH
3. MARK FCJ PART NUMBER AND DATE CODE LEGIBLE ON TUBE LABEL
4. APPLICATION INFORMATION:  
A. RECOMMENDED MOUNTING HOLE PATTERN IS SHOWN IN DETAIL "A"  
B. ALL MATING PINS TO BE .025/.64 SQ ON TRUE CENTER OF GIVEN TERMINAL SPACING WITHIN .015/.38.  
C. SUGGESTED MATING PIN LENGTH .350±.020/8.89±0.51.
- ⑤ ADD "LF" SUFFIX AT THE END OF PART NUMBER FOR LEAD FREE OPTION.
6. THESE PRODUCTS MEET EUROPEAN UNION DIRECTIVES AND OTHER COUNTRY REGULATIONS AS DESCRIBED IN GS-22-008.
7. THIS PART WILL WITHSTAND EXPOSURE TO 260°C PEAK TEMPERATURE FOR 20 SECONDS IN WAVE SOLDER, INFRA-RED OR VAPOR PHASE SOLDER PROCESS.

mat'l. code		surface	tolerance	projection	product family
ISO 1302		ISO 1302	ISO 406		CARD CONN
ISO 1101		ISO 1101	ISO 1101		
ltr	ecr	no	dr	date	title
G					VERT. CARD CONNECTOR
tolerances unless otherwise specified angles linear .XX±.01/.XX±.3 O'±2" .XXX±.005/.XXX±.13 .XXX±.005/.XXX±.061					INCH/MM
dr M. CORNMAN 9/30/92 engr W. NORTHEY 9/30/92 chr C.GINGRICH 9/30/92 appd W. NORTHEY 9/30/92					scale 4:1
					sheet 2 of 3 size 65936 A3
type Product Customer Drawing					

sheet index	revision sheet																			
-------------	----------------	--	--	--	--	--	--	--	--	--	--	--	--	--	--	--	--	--	--	--

PRODUCT NO	SIZE	DIM A	DIM B MAX	LEAD FREE OPTION
65936-001	UNASSIGNED			
-002	2 X 2	.100/2.54	.200/5.08	NOTE 5
-003	2 X 3	.200/5.08	.300/7.62	
-004	2 X 4	.300/7.62	.400/10.16	
-005	2 X 5	.400/10.16	.500/12.70	
-006	2 X 6	.500/12.70	.600/15.24	
-007	2 X 7	.600/15.24	.700/17.78	
-008	2 X 8	.700/17.78	.800/20.32	
-009	2 X 9	.800/20.32	.900/22.86	
-010	2 X 10	.900/22.86	1.000/25.40	
-011	2 X 11	1.000/25.40	1.100/27.94	
-012	2 X 12	1.100/27.94	1.200/30.48	
-013	2 X 13	1.200/30.48	1.300/33.02	
-014	2 X 14	1.300/33.02	1.400/35.56	
-015	2 X 15	1.400/35.56	1.500/38.10	
-016	2 X 16	1.500/38.10	1.600/40.64	
-017	2 X 17	1.600/40.64	1.700/43.18	
-018	2 X 18	1.700/43.18	1.800/45.72	
-019	2 X 19	1.800/45.72	1.900/48.26	
-020	2 X 20	1.900/48.26	2.000/50.80	
-021	2 X 21	2.000/50.80	2.100/53.34	
-022	2 X 22	2.100/53.34	2.200/55.88	
-023	2 X 23	2.200/55.88	2.300/58.42	
-024	2 X 24	2.300/58.42	2.400/60.96	
-025	2 X 25	2.400/60.96	2.500/63.50	
-026	2 X 26	2.500/63.50	2.600/66.04	
-027	2 X 27	2.600/66.04	2.700/68.58	
65936-028	2 X 28	2.700/68.58	2.800/71.12	

PRODUCT NO	SIZE	DIM A	DIM B MAX	LEAD FREE OPTION
65936-029	2 X 29	2.800/71.12	2.900/73.66	NOTE 5
-030	2 X 30	2.900/73.66	3.000/76.20	
-031	2 X 31	3.000/76.20	3.100/78.74	
-032	2 X 32	3.100/78.74	3.200/81.28	
-033	2 X 33	3.200/81.28	3.300/83.82	
-034	2 X 34	3.300/83.82	3.400/86.36	
-035	2 X 35	3.400/86.36	3.500/88.90	
65936-036	2 X 36	3.500/88.90	3.600/91.44	

mat'l. code	surface	tolerance	projection	product family
ISO 1302	ISO 1302	ISO 406	ISO 1101	CARD CONN
ISO 1101	tolerances unless otherwise specified	XX4-01/XX4-3	INCH/MM	title
ISO 1101	angles	XXXX-0.005/XXXX-13	scale 4:1	VERT. CARD CONNECTOR
ISO 1101	linear	XXXX-0.025/XXXX-261	FCJ	.154/3.91 CTR., DBL ROW
ISO 1101	0°±2'	dr M. CORNMAN 9/30/92		dwg no sheet 3 of 3 size
ISO 1101	engr W. NORTHEY 9/30/92	chr C.GINGRICH 9/30/92		65936 A3
ISO 1101	appd W. NORTHEY 9/30/92			type Product Customer Drawing
sheet index	revision sheet			

PDM: Rev:G STATUS:Released Printed: Oct 13, 2010