

Customer Information Sheet

DRAWING No.: F10-280XX46R

SHEET 3 OF 4

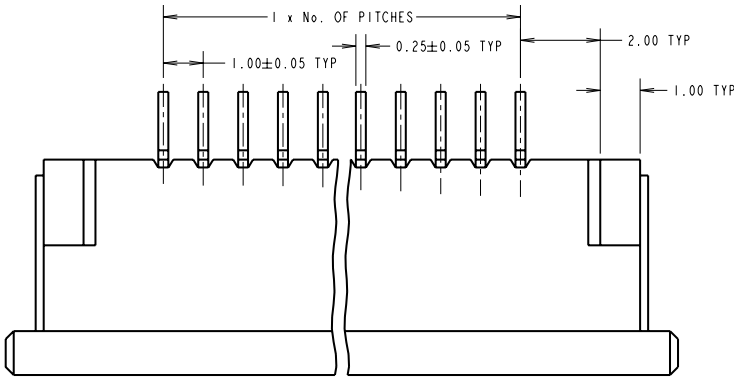
IF IN DOUBT - ASK

(C)

NOT TO SCALE

THIRD ANGLE PROJECTION

ALL DIMENSIONS IN mm



SPECIFICATIONS:

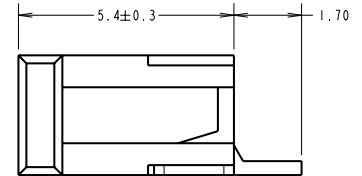
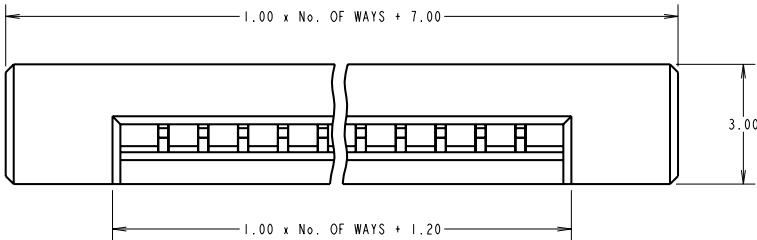
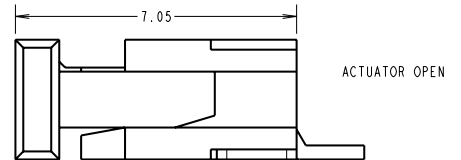
MATERIAL:
 MOULDINGS - PPS UL94V-0, BLACK
 CONTACTS & RETAINER: PHOSPHOR BRONZE

FINISH:
 CONTACTS & RETAINER: 0.4µ 100% TIN OVER 0.2µ NICKEL

ELECTRICAL:
 CURRENT RATING: 1A AC/DC MAX
 VOLTAGE RATING: 125V AC/DC MAX
 CONTACT RESISTANCE: 20 MILLIOHMS MAX
 INSULATION RESISTANCE: 100Ω MIN
 DIELECTRIC WITHSTANDING: 500V AC FOR 1 MINUTE

MECHANICAL:
 FPC RETENTION FORCE: 3.9 + (0.5 x No. OF WAYS) MIN
 DURABILITY: 30 CYCLES

ENVIRONMENTAL:
 TEMPERATURE RANGE: -20°C TO +85°C
 RESISTANCE TO SOLDER HEAT: 350°C FOR 3 SECONDS
 FOR COMPLETE SPECIFICATION SEE COMPONENT SPECIFICATION C030XX (LATEST ISSUE).



- NOTES:**
 1. ALL TOLERANCES ARE ±0.20 UNLESS OTHERWISE STATED.
 2. FOR REELING DETAILS SEE SHEET 4.

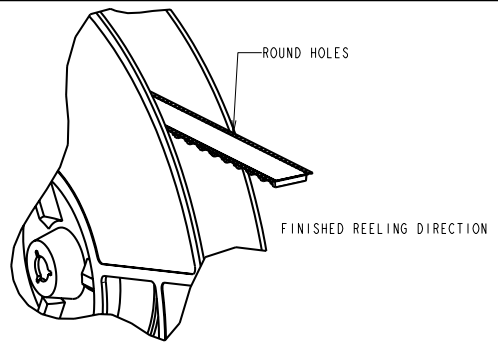
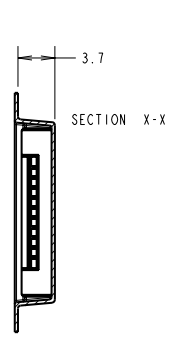
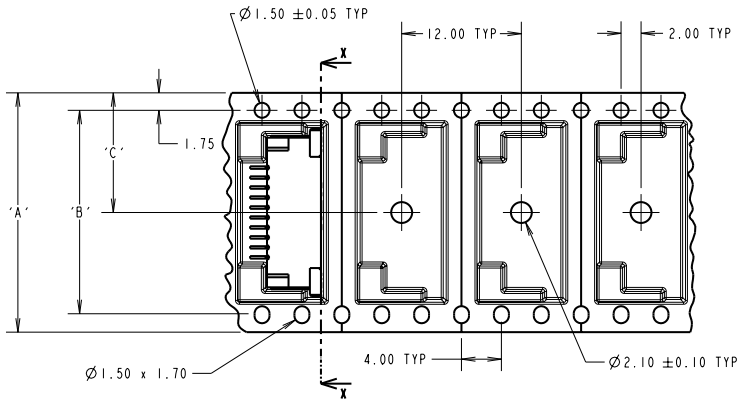
ORDER CODE:	
F10-280XX46R	
No. OF WAYS	03 TO 38
FINISH	46 - 100% TIN

SB	7	01.04.11	10825
NAME	ISS.	DATE	C/NOTE
APPROVED: S.BENNETT			
CHECKED: R.ADDE			
DRAWN: D.BECK			
CUSTOMER REF.:			
ASSEMBLY DRG:			

HARWIN			THIS DRAWING AND ANY INFORMATION OR DESCRIPTIVE MATTER SET OUT HEREON ARE CONFIDENTIAL AND COPYRIGHT PROPERTY OF THE HARWIN GROUP AND MUST NOT BE DISCLOSED, LOANED, COPIED OR USED FOR MANUFACTURING, TENDERING OR FOR ANY OTHER PURPOSE WITHOUT THEIR WRITTEN PERMISSION.	TOLERANCES X. : ±1mm X.X : ±0.25mm X.XX : ±0.10mm X.XXX : ±0.01mm ANGLES : ±5° UNLESS STATED	MATERIAL: SEE ABOVE	TITLE: 1.00mm PITCH SMT HORIZONTAL BOTTOM CONTACT FPC (TAPE & REEL)
HARWIN USA TEL: 603 893 5376 FAX: 603 893 5396 mis@harwin.com	HARWIN Europe (UK) TEL: 023 9231 4545 FAX: 023 9231 4590 mis@harwin.co.uk	HARWIN Asia TEL: +65 6 779 4909 FAX: +65 6 779 3868 mis@harwin.com.sg		FINISH: SEE ABOVE	S/AREA: mm²	DRAWING NUMBER: F10-280XX46R

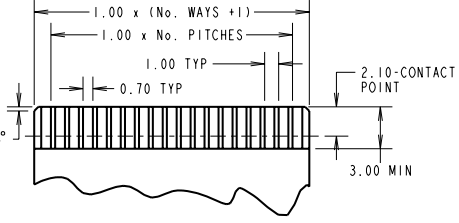
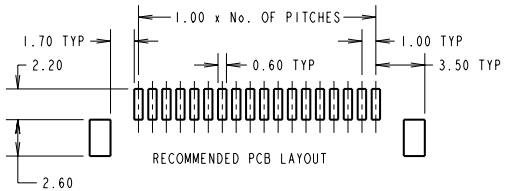
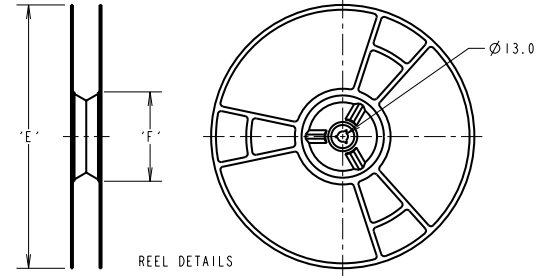
Customer Information Sheet

DRAWING No.: F10-280XX46R SHEET 4 OF 4 IF IN DOUBT - ASK (C) NOT TO SCALE THIRD ANGLE PROJECTION ALL DIMENSIONS IN mm



HARWIN PART No.	NO. OF WAYS	DIMENSION ±0.20					
		'A'	'B'	'C'	'D'	'E'	'F'
F10-2900346R	03				10.4		
F10-2900446R	04				11.4		
F10-2900546R	05				12.4		
F10-2900646R	06				13.4		
F10-2900746R	07	24.0		11.5	14.4	330	62
F10-2900846R	08				15.4		
F10-2900946R	09				16.4		
F10-2901046R	10				17.4		
F10-2901146R	11				18.4		
F10-2901246R	12				19.4		
F10-2901346R	13				20.4		
F10-2901446R	14	32.0	28.4	14.2	21.4		
F10-2901546R	15				22.4		
F10-2901646R	16				23.4		
F10-2901746R	17				24.4		
F10-2901846R	18				25.4		
F10-2901946R	19				26.4		
F10-2902046R	20				27.4		
F10-2902146R	21	44.0	40.4	20.2	28.4	360	100
F10-2902246R	22				29.4		
F10-2902346R	23				30.4		
F10-2902446R	24				31.4		
F10-2902546R	25				32.4		
F10-2902646R	26				33.4		
F10-2902746R	27				34.4		
F10-2902846R	28				35.4		
F10-2902946R	29	56.0	52.4	26.2	36.4		
F10-2903046R	30				37.4		

ORDER CODE:
F10-280XX46R
No. OF WAYS: 03 TO 38
FINISH: 46 - 100% TIN



- NOTES:
1. QUANTITY OF COMPONENTS PER REEL = 1500.
2. FOR CONNECTOR DIMENSIONS SEE SHEET 3.
3. TAPE & REELING TO BE IN ACCORDANCE WITH ELECTRONIC INDUSTRIES ASSOCIATION EIA-481-2-A.

SB	7	01.04.11	10825
NAME	ISS.	DATE	C/NOTE
APPROVED: S.BENNETT			
CHECKED: R.ADDÉ			
DRAWN: D.BECK			
CUSTOMER REF.:			
ASSEMBLY DRG:			

HARWIN			THIS DRAWING AND ANY INFORMATION OR DESCRIPTIVE MATTER SET OUT HEREON ARE CONFIDENTIAL AND COPYRIGHT PROPERTY OF THE HARWIN GROUP AND MUST NOT BE DISCLOSED, LOANED, COPIED OR USED FOR MANUFACTURING, TENDERING OR FOR ANY OTHER PURPOSE WITHOUT THEIR WRITTEN PERMISSION.	TOLERANCES X. : ± 1mm X.X : ± 0.25mm X.XXX : ± 0.10mm X.XXX : ± 0.01mm ANGLES : ± 5° UNLESS STATED	MATERIAL: SEE ABOVE FINISH: SEE ABOVE S/AREA: mm ²	TITLE: 1.00mm PITCH SMT HORIZONTAL BOTTOM CONTACT FPC (TAPE & REEL) DRAWING NUMBER: F10-280XX46R	SHT 4 of 4
HARWIN USA TEL: 603 893 5376 FAX: 603 893 5396 mis@harwin.com	HARWIN Europe (UK) TEL: 023 9231 4545 FAX: 023 9231 4590 mis@harwin.co.uk	HARWIN Asia TEL: +65 6 779 4909 FAX: +65 6 779 3868 mis@harwin.com.sg		HARWIN USA TEL: 603 893 5376 FAX: 603 893 5396 mis@harwin.com			