

# Customer Information Sheet

DRAWING No.: F10-290XX46R

SHEET 3 OF 4

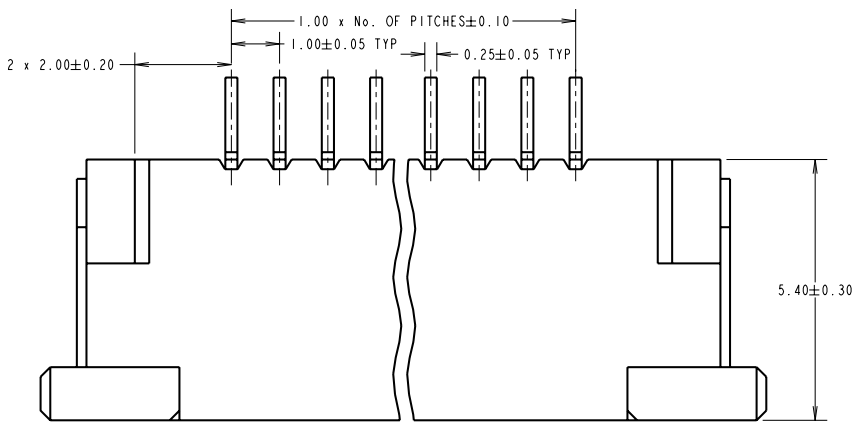
IF IN DOUBT - ASK

©

NOT TO SCALE

THIRD ANGLE PROJECTION

ALL DIMENSIONS IN mm



**SPECIFICATIONS:**

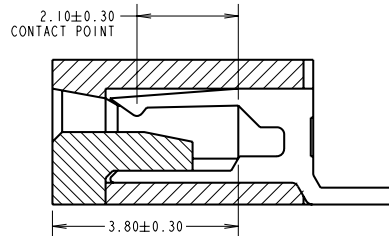
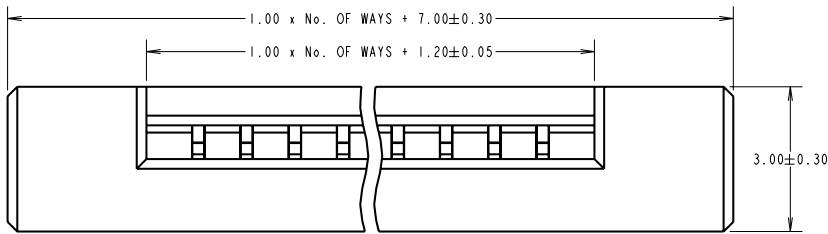
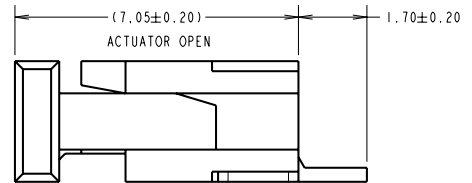
**MATERIAL:**  
 MOULDINGS - PPS UL94V-0, BLACK  
 CONTACTS & RETAINER: PHOSPHOR BRONZE

**FINISH:**  
 CONTACTS & RETAINER: 0.4µ 100% TIN OVER 0.2µ NICKEL

**ELECTRICAL:**  
 CURRENT RATING: 1A AC/DC MAX  
 VOLTAGE RATING: 125V AC/DC MAX  
 CONTACT RESISTANCE: 20 MILLIOHMS MAX  
 INSULATION RESISTANCE: 100Ω MIN  
 DIELECTRIC WITHSTANDING: 500V AC FOR 1 MINUTE

**MECHANICAL:**  
 FPC RETENTION FORCE: 3.9 + (0.5 x No. OF WAYS) MIN  
 DURABILITY: 30 CYCLES

**ENVIRONMENTAL:**  
 TEMPERATURE RANGE: -20°C TO +85°C  
 RESISTANCE TO SOLDER HEAT: 350°C FOR 3 SECONDS  
 FOR COMPLETE SPECIFICATION SEE COMPONENT SPECIFICATION C030XX (LATEST ISSUE).



ORDER CODE:  
**F10-290XX46R**  
 No. OF WAYS  
 03 TO 38  
 FINISH  
 46 - 100% TIN

NOTES:  
 1. FOR REELING DETAILS SEE SHEET 4.

SB	8	01.04.11	10825
NAME	ISS.	DATE	C/NOTE
APPROVED: S.BENNETT			
CHECKED: R.ADDE			
DRAWN: D.BECK			
CUSTOMER REF.:			
ASSEMBLY DRG:			

<b>HARWIN</b>			THIS DRAWING AND ANY INFORMATION OR DESCRIPTIVE MATTER SET OUT HEREON ARE CONFIDENTIAL AND COPYRIGHT PROPERTY OF THE HARWIN GROUP AND MUST NOT BE DISCLOSED, LOANED, COPIED OR USED FOR MANUFACTURING, TENDERING OR FOR ANY OTHER PURPOSE WITHOUT THEIR WRITTEN PERMISSION.	TOLERANCES X = ±1mm X.X = ±0.25mm X.XX = ±0.10mm X.XXX = ±0.07mm ANGLES : ±5° UNLESS STATED	MATERIAL: SEE ABOVE	TITLE: 1.00mm PITCH SMT HORIZONTAL TOP CONTACT FPC (TAPE & REEL)
HARWIN USA TEL: 603 893 5376 FAX: 603 893 5396 mis@harwin.com	HARWIN Europe (UK) TEL: 023 9231 4545 FAX: 023 9231 4590 mis@harwin.co.uk	HARWIN Asia TEL: +65 6 779 4909 FAX: +65 6 779 3868 mis@harwin.com.sg		FINISH: SEE ABOVE	DRAWING NUMBER: <b>F10-290XX46R</b>	SHT 3 OF 4

# Customer Information Sheet

DRAWING No.: F10-290XX46R

SHEET 4 OF 4

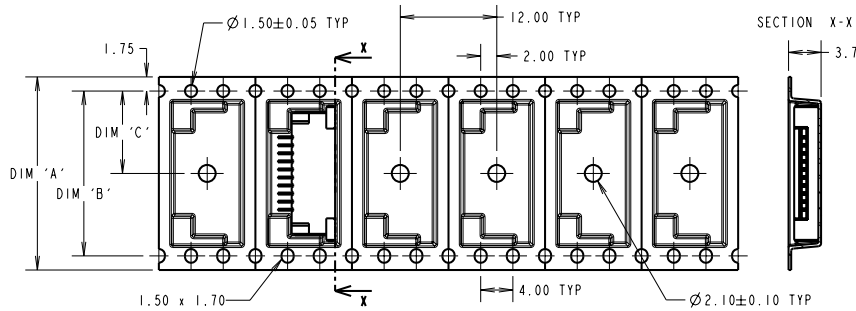
IF IN DOUBT - ASK

(C)

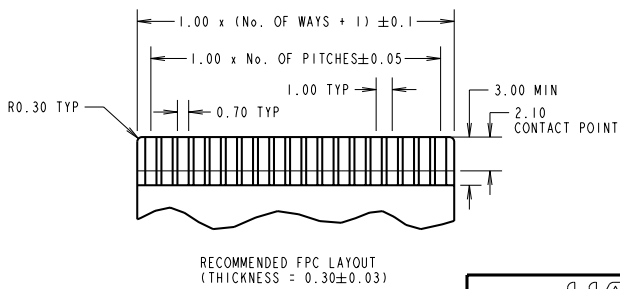
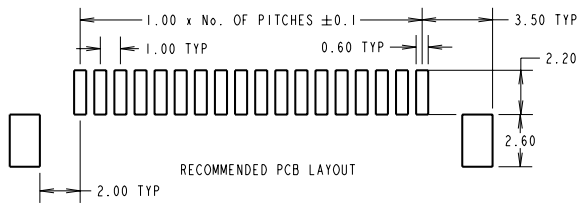
NOT TO SCALE

THIRD ANGLE PROJECTION

ALL DIMENSIONS IN mm



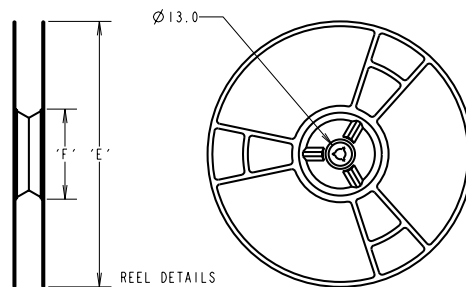
FINISHED REELING DIRECTION



NOTES:

1. FOR CONNECTOR DIMENSIONS SEE SHEET 3.
2. QUANTITY OF COMPONENTS PER REEL = 1500
3. TAPE & REELING TO BE IN ACCORDANCE WITH ELECTRONIC INDUSTRIES ASSOCIATION EIA-481-2-A.

HARWIN PART No.	NO. OF WAYS	DIMENSION ±0.20				
		'A'	'B'	'C'	'E'	'F'
F10-290XX46R	03 TO 11	24.0	11.5	330	62	
F10-290XX46R	12 TO 15	32.0	28.4	14.2		
F10-290XX46R	16 TO 26	44.0	40.4	20.2	360	100
F10-290XX46R	27 TO 38	56.0	52.4	26.2		



SB	8	01.04.11	10825
NAME	ISS.	DATE	C/NOTE
APPROVED: S.BENNETT			
CHECKED: R.ADDE			
DRAWN: D.BECK			
CUSTOMER REF.:			
ASSEMBLY DRG:			

<b>HARWIN</b>			THIS DRAWING AND ANY INFORMATION OR DESCRIPTIVE MATTER SET OUT HEREON ARE CONFIDENTIAL AND COPYRIGHT PROPERTY OF THE HARWIN GROUP AND MUST NOT BE DISCLOSED, LOANED, COPIED OR USED FOR MANUFACTURING, TENDERING OR FOR ANY OTHER PURPOSE WITHOUT THEIR WRITTEN PERMISSION.	TOLERANCES: X = ±1mm X.X = ±0.25mm X.XX = ±0.10mm X.XXX = ±0.01mm ANGLES : ±5° UNLESS STATED	MATERIAL:  FINISH:  S/AREA: mm <sup>2</sup>	TITLE: 1.00mm PITCH SMT HORIZONTAL TOP CONTACT FPC (TAPE & REEL)  DRAWING NUMBER: <b>F10-290XX46R</b>	SHT 4 OF 4
HARWIN USA TEL: 603 893 5376 FAX: 603 893 5396 mis@harwin.com	HARWIN Europe (UK) TEL: 023 9231 4545 FAX: 023 9231 4590 mis@harwin.co.uk	HARWIN Asia TEL: +65 6 779 4909 FAX: +65 6 779 3868 mis@harwin.com.sg					