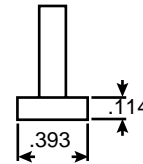
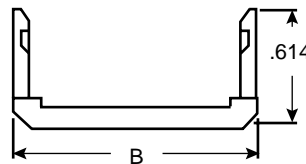
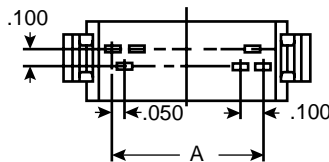
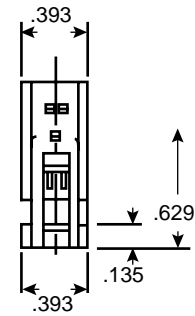
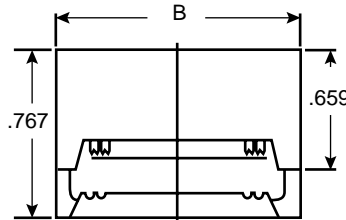
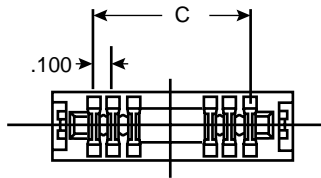


Dimensions (In.)



Mouser Stock No.	No. Of Contacts	A	B	C
151-1020	20 contact IDC card edge connector	.950	1.374	.900
151-1326	26 contact IDC card edge connector	1.250	1.673	1.200
151-1734	34 contact IDC card edge connector	1.650	2.074	1.600
151-2040	40 contact IDC card edge connector	1.950	2.370	1.900
151-2550	50 contact IDC card edge connector	2.465	2.874	2.400

Specifications:

- Current rating: 1amp DC
- Insulation resistance: 1000MΩ
- Breakdown voltage: 500VAC/1 minute
- IDC wire size: 28AWG/.050" spacing
- Contact resistance: 30mΩ max. @ 6VDC

Your source for quality electronics. Toll-free full service

(800) 346-6873