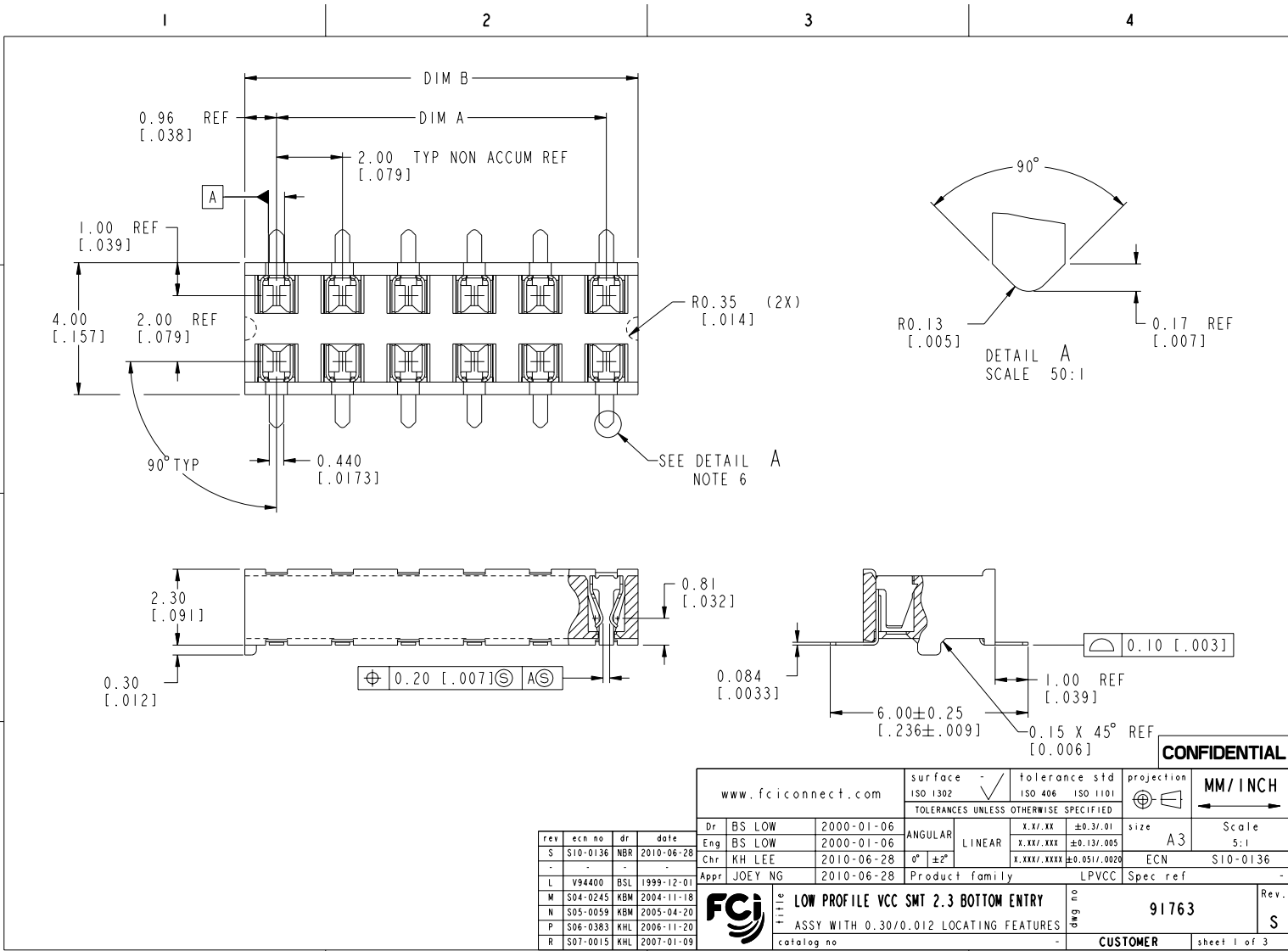


Copyright FCI.



**CONFIDENTIAL**

rev	ecn no	dr	date
S	S10-0136	NBR	2010-06-28
-	-	-	-
L	V94400	BSL	1999-12-01
M	S04-0245	KBM	2004-11-18
N	S05-0059	KBM	2005-04-20
P	S06-0383	KHL	2006-11-20
R	S07-0015	KHL	2007-01-09

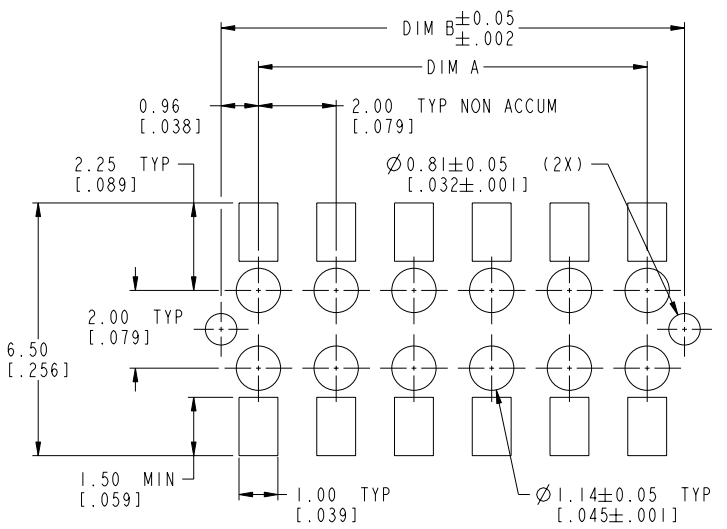
www.fciconnect.com		surface -	tolerance std	projection	MM/INCH
		ISO 1302	ISO 406 ISO 1101	⊕	←→
		TOLERANCES UNLESS OTHERWISE SPECIFIED			
Dr	BS LOW	2000-01-06	ANGULAR	size	Scale
Eng	BS LOW	2000-01-06	LINEAR	A3	5:1
Chr	KH LEE	2010-06-28	0° ±2°	ECN	S10-0136
Appr	JOEY NG	2010-06-28	Product family	LPVCC	Spec ref
FCI		TITLE		AWG no	Rev.
		LOW PROFILE VCC SMT 2.3 BOTTOM ENTRY		91763	S
		ASSY WITH 0.30/0.012 LOCATING FEATURES		CUSTOMER	sheet 1 of 3
		catalog no			

REV F - 2006-04-17

FDM: Rev:S STATUS:Released Printed: Nov 27, 2010

PRODUCT NO SEE NOTE 4	POSITIONS	DIM. A	DIM. B
91763-X04	2 X 2	2.00 / .079	3.92 / .154
-X06	2 X 3	4.00 / .158	5.92 / .233
-X08	2 X 4	6.00 / .236	7.92 / .312
-X10	2 X 5	8.00 / .315	9.92 / .391
-X12	2 X 6	10.00 / .394	11.92 / .469
-X14	2 X 7	12.00 / .472	13.92 / .548
-X16	2 X 8	14.00 / .551	15.92 / .627
-X18	2 X 9	16.00 / .630	17.92 / .706
-X20	2 X 10	18.00 / .709	19.92 / .784
-X22	2 X 11	20.00 / .787	21.92 / .863
-X24	2 X 12	22.00 / .866	23.92 / .942
-X26	2 X 13	24.00 / .945	25.92 / 1.020
-X28	2 X 14	26.00 / 1.024	27.92 / 1.099
-X30	2 X 15	28.00 / 1.102	29.92 / 1.178

CONTACT AREA PLATING OPTIONS	
0	= 0.20µm/8µ" Au CONTACT AREA
1	= 0.76µm/30µ" Au CONTACT AREA
3	= 0.38µm/15µ" Au CONTACT AREA



**RECOMMENDED PAD LAYOUT**

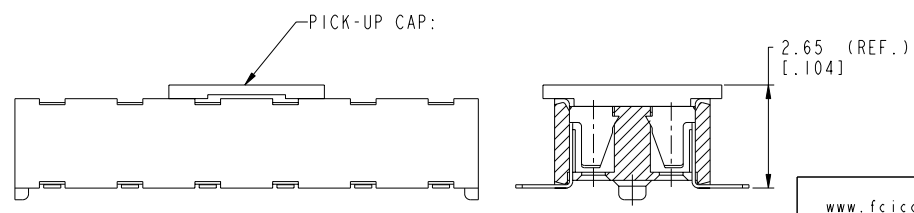


FIG. 1  
NOTE 5(b) & (d)

**CONFIDENTIAL**

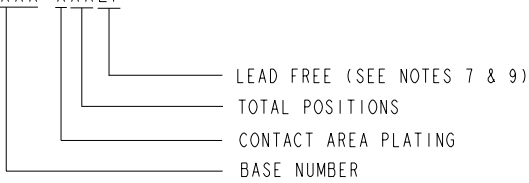
www.fciconnect.com			surface	tolerance std	projection	MM / INCH
			ISO 1302	ISO 406 ISO 1101	⊕	← →
			TOLERANCES UNLESS OTHERWISE SPECIFIED			
Dr	BS LOW	2000-01-06	ANGULAR	X.X/XX	±0.3/.01	size A3 Scale 10:1
Eng	BS LOW	2000-01-06	LINEAR	X.XX/XXX	±0.13/.005	ECN S10-0136
Chr	KH LEE	2010-06-28	0° ±2°	X.XXX/XXXX	±0.051/.0022	Spec ref -
Appr	JOEY NG	2010-06-28	Product family		LPVCC	
			<b>LOW PROFILE VCC SMT 2.3 BOTTOM ENTRY</b> ASSY WITH 0.30/0.012 LOCATING FEATURES		dwg no <b>91763</b>	Rev. <b>S</b>
catalog no			CUSTOMER		sheet 2 of 3	

NOTES:

- 1. HOUSING MATERIAL : HIGH TEMP PLASTIC.
- 2. TERMINAL MATERIAL : BeCu.
- 3. TERMINAL RETENTION 0.5Kg/1.1 Lbs.

④ PRODUCT DESCRIPTION CODE :

XXXXX-XXXLF



- ⑤ PACKAGING :  
 (a) XXXXX-XXX --- STD PACKAGING IN TUBE.  
 (b) XXXXX-XXXTR --- TAPE AND REEL (CONDUCTIVE) PACKAGING WITH PICK-UP CAP ( SEE FIG 1).  
 (c) XXXXX-XXXTRN --- TAPE AND REEL (CONDUCTIVE) PACKAGING WITHOUT PICK-UP CAP.

6. "V" CUT OPTINAL - MANUFACTURING PROCESS OPTION.

- ⑦ SOLDERING PLATING:  
 (a) SOLDER OF P/N:91763-XXX IS TIN/LEAD PLATED.  
 (b) SOLDER OF P/N:91763-XXXLF IS GOLD FLASH PLATED.

8. THE HOUSING WILL WITHSTAND EXPOSURE TO 255°C PEAK TEMPERATURE FOR 10 SECONDS IN A CONVECTION, INFRA-RED OR VAPOR PHASE REFLOW OVEN.

⑨ THIS PRODUCT MEETS EUROPEAN UNION DIRECTIVES AND OTHER COUNTRY REGULATIONS AS DESCRIBED IN GS-22-008.

- ⑩ A SYMBOL WILL BE NEXT TO ANY DIMENSION, VIEW OR NOTE WHICH HAS BEEN MODIFIED WITH THE CURRENT DRAWING REVISION.

**CONFIDENTIAL**

www.fciconnect.com			surface - ✓ ISO 1302	tolerance std ISO 406 ISO 1101	projection MM / INCH	← →		
			TOLERANCES UNLESS OTHERWISE SPECIFIED					
Dr	BS LOW	2000-01-06	ANGULAR	LINEAR	X.X/XX	±0.3/01	size A3	Scale 5:1
Eng	BS LOW	2000-01-06			X.XX/XXX	±0.13/005	ECN	S10-0136
Chr	KH LEE	2010-06-28	0° ±2°		X.XXX/XXXX	±0.051/0022	LPVCC	Spec ref -
Appr	JOEY NG	2010-06-28	Product family					
		TITLE LOW PROFILE VCC SMT 2.3 BOTTOM ENTRY			dwg no	91763		Rev. S
		ASSY WITH 0.30/0.012 LOCATING FEATURES			CUSTOMER		sheet 3 of 3	

REV F - 2006-04-17