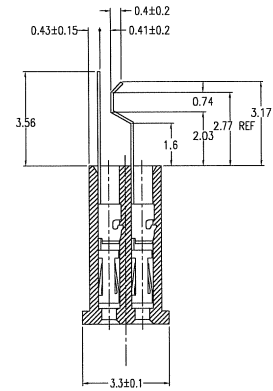
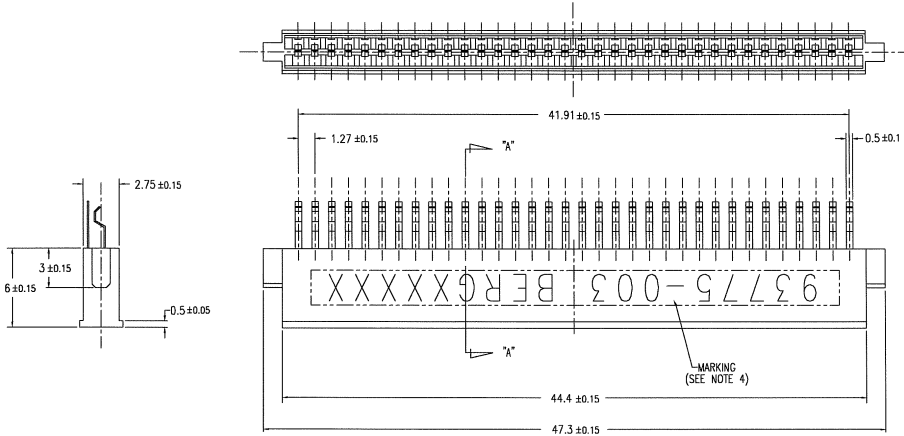
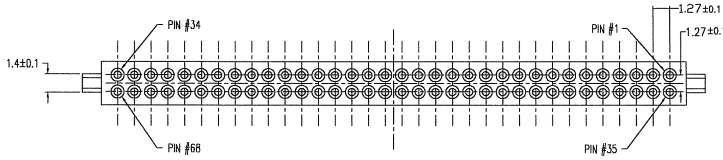


PRODUCT NO.	HOUSING COLOR	PACKAGING	FINISH
93775-003	BLACK	STANDARD TRAY	SEE NOTE ①
93775-003LF	BLACK	STANDARD TRAY	SEE NOTE ②

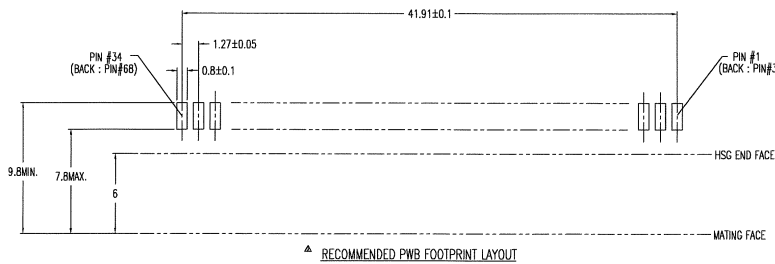


SECTION "A-A"



NOTE

- MATERIAL
CONTACT : BeCu 0.08t
HSG : LCP UL94V-0
FINISH(PLATING)
CONTACT : ALL OVER ----- Ni UNDER 0.5 μm THK.MIN.
SELECTIVE ----- Au PLATING 0.1 μm THK.MIN.
OVER Pd-Ni PLATING.
SOLDER TAIL ----- TIN LEAD 2.5 μm THK. MIN.
- FOR MATING MALE CONN.(HDR./EJECTOR HDR.)
TO APPLY 68POS. MALE CONN.(HDR./EJECTOR HDR.) BASED ON
JEIDA AND PCMCIA SPECIFICATION
- GENERAL TOLERANCE : ±0.25
- MARKING: "93775-003 BERGXXXX" (XXXXX : LOT No.)
- RECOMMENDED PWB THICKNESS : 0.34 TO 0.6
- 93775-003LF FINISH(PLATING)
CONTACT : ALL OVER ----- Ni UNDER 0.5 μm THK.MIN.
SELECTIVE ----- Au PLATING 0.1 μm THK.MIN.
OVER Pd-Ni PLATING.
SOLDER TAIL ----- Au FLASH
- THIS LF SUFFIX PRODUCT MEETS EUROPEAN UNION DIRECTIVES
AND OTHER COUNTRY REGULATIONS AS DESCRIBED IN GS-22-00B.



RECOMMENDED PWB FOOTPRINT LAYOUT

itr	description	rev no	dr	date	surface	tolerance	projection	product family	CODE
1	REVISED		KS	4/20/93	ISO 1302	ISO 1101	ISO 1101	SBI-F-PCMCIA RECEPTACLE	JP
2	REVISED		KS	1/31/94	ISO 1302	ISO 1101	ISO 1101	JEIDA/PCMCIA	
A	RELEASED	J40064	KS	2/28/94	0.1XX ±0.25	0.0XX ±0.25	scale 5:1	68 POS. RECEPTACLE	
B	REVISED	006-0159	R.S	4/18/08	R.SHOUJI	9/9/08		dwg no	sheet 1 of 1 size
C	REVISED	006-0354	R.S	9/16/08	R.SHOUJI	9/16/08		93775	A2
sheet	revision							Type	Product Customer Drawing
index	sheet	1						Rev.	C