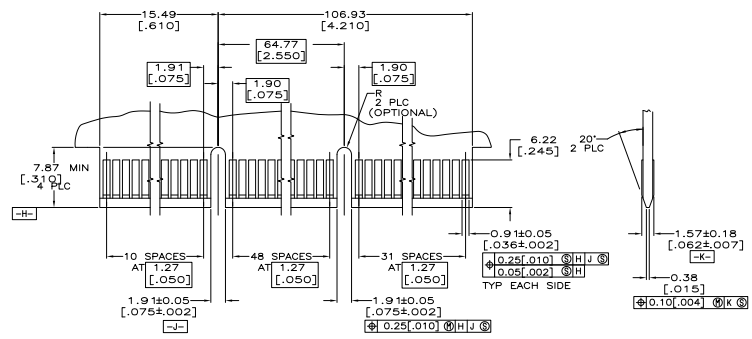


RECOMMENDED CONNECTOR MOUNTING HOLE PATTERN
 (CONNECTOR SIDE SHOWN)



RECOMMENDED MATING BOARD EDGE CONFIGURATION

- △ HOUSING: HIGH TEMPERATURE THERMOPLASTIC.
COLOR - NATURAL
- △ CONTACT: PHOSPHOR BRONZE.
- △ CONTACT FINISH: 0.00127[0.00050] MIN NICKEL ALL OVER.
GOLD FLASH OVER NICKEL IN CONTACT AREA.
0.00254[0.00100] MIN TIN-LEAD OVER NICKEL ON SOLDER TAILS.
- △ CONTACT FINISH: 0.00127[0.00050] MIN NICKEL ALL OVER.
0.00038[0.00015] GOLD OVER NICKEL IN CONTACT AREA.
0.00254[0.00100] MIN TIN-LEAD OVER NICKEL ON SOLDER TAILS.
- △ CONTACT FINISH: 0.00127[0.00050] MIN NICKEL ALL OVER.
0.00076[0.00030] GOLD OVER NICKEL IN CONTACT AREA.
0.00254[0.00100] MIN TIN-LEAD OVER NICKEL ON SOLDER TAILS.
- △ DISTANCE FROM CONTACT POINT TO BOTTOM OF CARD SLOT.
- △ AMP PART NUMBER, DATE CODE AND CSA LOGO MARKED IN APPROXIMATE LOCATION SHOWN.
- △ CORED OR SOLID SIDE WALLS ARE AT DISCRETION OF AMP INCORPORATED.
- △ OBSOLETE PARTS: OBSOLETE CIS STREAMLINING PER D.RENAUD/D.SINISI

THIS DRAWING IS A CONTROLLED DOCUMENT.		REV	DATE	TE Connectivity
BY: [Signature]		BY	DATE	
DRAWN BY: [Signature]		BY	DATE	CONNECTOR ASSEMBLY, 92 DUAL POSITION, 050 SERIES.
CHECKED BY: [Signature]		BY	DATE	
PROJECT NAME: 108-14034		REV	DATE	DRAWN TO: [Signature]
CUSTOMER: 114-26012		REV	DATE	
PART: [Signature]		REV	DATE	PART NO: 100779 (G=145165)
CUSTOMER DRAWING		REV	DATE	