

EMI Power Line Filter, CA Series



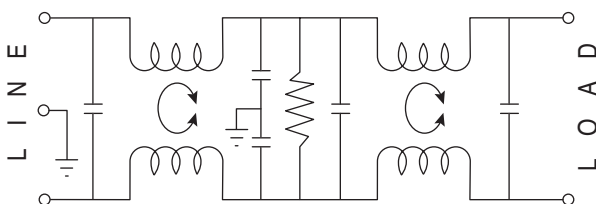
437-01CA1, 437-01CA2, 437-01CA3, 437-02CA1, 437-02CA2, 437-02CA3, 437-03CA1, 437-03CA2, 437-03CA3, 437-05CA1, 437-05CA2, 437-05CA3, 437-10CA1, 437-10CA2, 437-10CA3, 437-10CA4, 437-20CA5, 437-20CA6

EMI Power Line Filter, CA Series (Page 1 of 2)

Introduction:

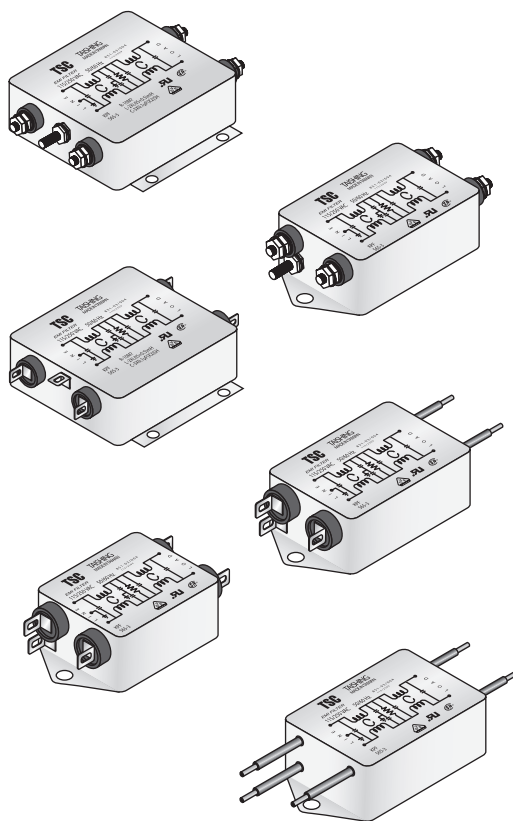
The CA series RFI/EMI power line filters are designed for low impedance loads to suppress line-to-ground and line-to-line interference. These filters are enclosed with metal cases of various termination styles for mounting on any equipment. The CA series power line filters are ideal for computers and peripheral equipment where pulsed, continuous and/or intermittent EMI interference is present. By dual T type circuit, the CA series provides extremely low leakage current and premium performance at moderate cost.

Electrical Schematic

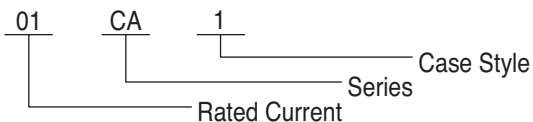


Specifications:

SPECIFICATIONS	
Rated Voltage:	115/250 VAC
Power Line Frequency:	50/60 Hz
Rated Current:	1, 2, 3, 5, 10, and 20 Amps
Maximum Leakage Current:	Line-to-Ground @ 115 VAC 60 Hz 0.5 mA, @ 115 VAC 60 Hz 0.5 mA
Test Voltage:	Line-to-Ground: 2250 VDC, one minute Line-to-Ground: 1450 VDC, one minute



Part Numbering System



Typical insertion loss (dB):
Line-to-Ground in 50 ohm system.

Current Rating	Frequency (MHz)					
	0.15	0.5	1	5	10	30
1A 2A 3A	30	65	65	65	65	60
5A 10A 20A	11	50	62	65	65	60

437-01CA1, 437-01CA2, 437-01CA3, 437-02CA1, 437-02CA2, 437-02CA3, 437-03CA1, 437-03CA2, 437-03CA3, 437-05CA1, 437-05CA2, 437-05CA3, 437-10CA1, 437-10CA2, 437-10CA3, 437-10CA4, 437-20CA5, 437-20CA6

Date Last Revised: 10-18-05

Available from Mouser Electronics
1-800-346-6873
www.mouser.com

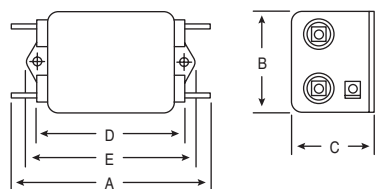
KC-300089

EMI Power Line Filter, CA Series



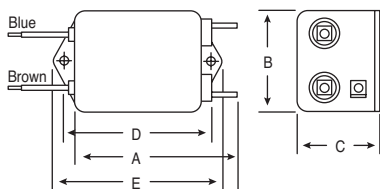
437-01CA1, 437-01CA2, 437-01CA3, 437-02CA1, 437-02CA2, 437-02CA3, 437-03CA1, 437-03CA2, 437-03CA3, 437-05CA1, 437-05CA2, 437-05CA3, 437-10CA1, 437-10CA2, 437-10CA3, 437-10CA4, 437-20CA5, 437-20CA6

Dimensions: mm (In.)



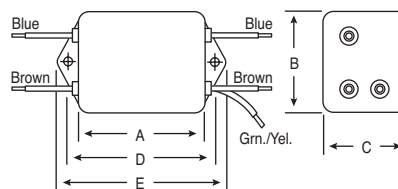
Fastons: $\frac{.250}{6.35}$ (5) Holes: $\frac{.07}{1.8}$ Dia.
Mounting Holes: $\frac{.188}{4.78}$ Dia.(2)

FIG. 1



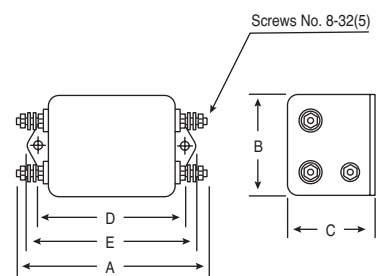
Fastons: $\frac{.250}{6.35}$ (3) Holes: $\frac{.07}{1.8}$ Dia.
Wire Leads: $\frac{.40}{101.6}$ Min.(2)
Mounting Holes: $\frac{.188}{4.78}$ Dia.(2)

FIG. 2



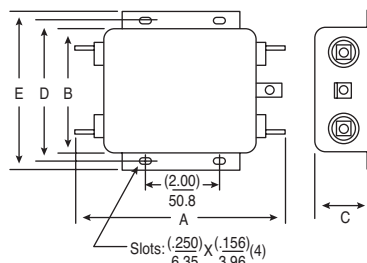
Wire Leads: $\frac{.40}{101.6}$ Min.(5)
Mounting Holes: $\frac{.188}{4.78}$ Dia.(2)

FIG. 3



Mounting Holes: $\frac{.188}{4.78}$ Dia.(2)

FIG. 4



Fastons: $\frac{.250}{6.35}$ (5) Holes: $\frac{.07}{1.8}$ Dia.

FIG. 5

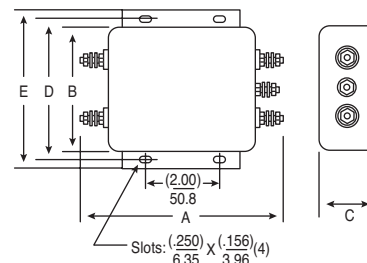


FIG. 6

EMI Power Line Filter, CA Series (Page 2 of 2)

437-01CA1, 437-01CA2, 437-01CA3, 437-02CA1, 437-02CA2, 437-02CA3, 437-03CA1, 437-03CA2, 437-03CA3, 437-05CA1, 437-05CA2, 437-05CA3, 437-10CA1, 437-10CA2, 437-10CA3, 437-10CA4, 437-20CA5, 437-20CA6

Current Rating	Part No.	Fig.	Dimensions mm (In.)									
			A (max)		B (max)		C (max)		D*	E (max)		
1A	437-01CA1	1	82.0	(3.23)	45.9	(1.81)	29.4	(1.16)	60.4	(2.38)	70.6	(2.78)
	437-01CA2	2	67.2	(2.65)	45.9	(1.81)	29.4	(1.16)	60.4	(2.38)	70.6	(2.78)
	437-01CA3	3	52.4	(2.06)	45.9	(1.81)	29.4	(1.16)	60.4	(2.38)	70.6	(2.78)
2A	437-02CA1	1	82.0	(3.23)	45.9	(1.81)	29.4	(1.16)	60.4	(2.38)	70.6	(2.78)
	437-02CA2	2	67.2	(2.65)	45.9	(1.81)	29.4	(1.16)	60.4	(2.38)	70.6	(2.78)
	437-02CA3	3	52.4	(2.06)	45.9	(1.81)	29.4	(1.16)	60.4	(2.38)	70.6	(2.78)
3A	437-03CA1	1	94.7	(3.73)	52.4	(2.06)	29.4	(1.16)	74.7	(2.94)	85.1	(3.35)
	437-03CA2	2	79.9	(3.15)	52.4	(2.06)	29.4	(1.16)	74.7	(2.94)	85.1	(3.35)
	437-03CA3	3	65.0	(2.56)	52.4	(2.06)	29.4	(1.16)	74.7	(2.94)	85.1	(3.35)
5A	437-05CA1	1	94.7	(3.73)	52.4	(2.06)	29.4	(1.16)	74.7	(2.94)	85.1	(3.35)
	437-05CA2	2	79.9	(3.15)	52.4	(2.06)	29.4	(1.16)	74.7	(2.94)	85.1	(3.35)
	437-05CA3	3	65.0	(2.56)	52.4	(2.06)	29.4	(1.16)	74.7	(2.94)	85.1	(3.35)
10A	437-10CA1	1	94.7	(3.73)	52.4	(2.06)	29.4	(1.16)	74.7	(2.94)	85.1	(3.35)
	437-10CA2	2	79.9	(3.15)	52.4	(2.06)	29.4	(1.16)	74.7	(2.94)	85.1	(3.35)
	437-10CA3	3	65.0	(2.56)	52.4	(2.06)	29.4	(1.16)	74.7	(2.94)	85.1	(3.35)
	437-10CA4	4	100.6	(3.96)	52.4	(2.06)	29.4	(1.16)	74.7	(2.94)	85.1	(3.35)
20A	437-20CA5	5	129.7	(5.11)	85.6	(3.37)	38.8	(1.53)	95.3	(3.75)	106.7	(4.20)
	437-20CA6	6	135.6	(5.34)	85.6	(3.37)	38.8	(1.53)	95.3	(3.75)	106.7	(4.20)

* Tolerance $\pm 0.38\text{mm}$ (± 0.015 inch)

Date Last Revised: 10-18-05

Available from Mouser Electronics
1-800-346-6873
www.mouser.com

KC-300089