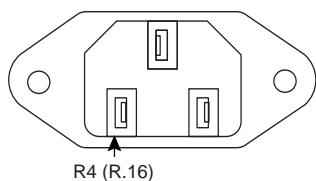
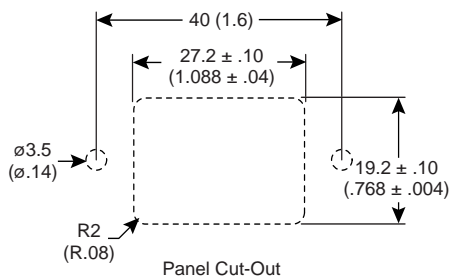
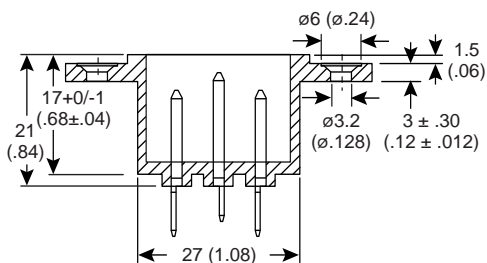
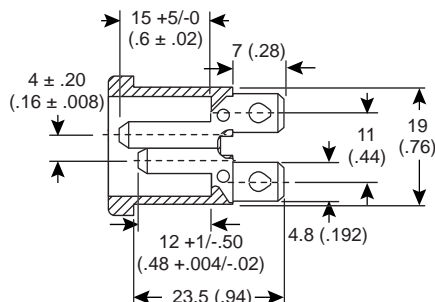
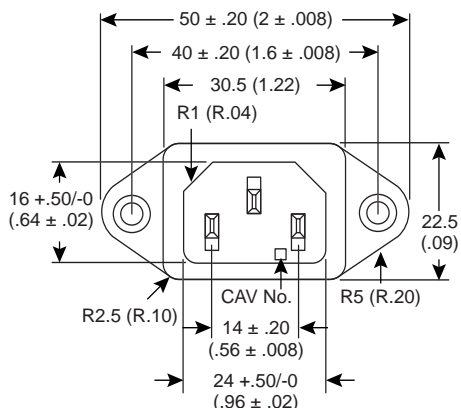


Inlet Socket

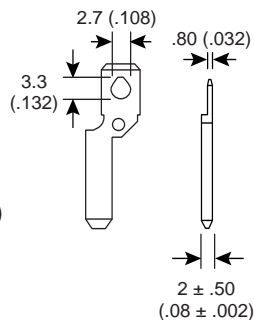
161-R30100

KOBICONN

Inlet Socket



Dimensions: mm (In.)



SPECIFICATIONS

Rating:	10A, 250VAC: VDE, SEMKO, NEMKO, DEMKO, FIMKO; 15A/250VAC: UL, CSA
Insulation Resistance:	Over 100MΩ at 500VDC
Dielectric Strength:	2000VAC for 1 minute

MATERIALS

Body:	Black Glass-Fiber Thermoplastic UL 94-0
--------------	---

Date Last Revised: 5-6-05

Available from Mouser Electronics
1-800-346-6873
www.mouser.com

KC- 300197

161-R30100