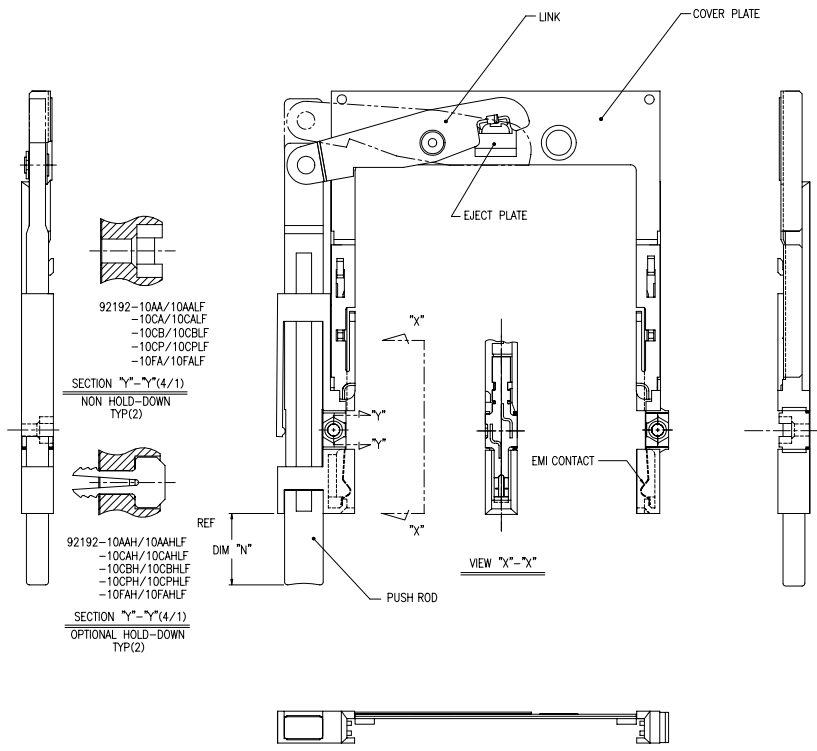


PRODUCT NO.	
92192-10AA/10AALF	△
92192-10AAH/10AAHLF	△
92192-10CA/10CALF	△
92192-10CAH/10CAHLF	△
92192-10CB/10CBLF	△
92192-10CBH/10CBHLF	△
92192-10CP/10CPLF	△
92192-10CPH/10CPHLF	△
92192-10FA/10FALF	△
92192-10FAH/10FAHLF	△

REVISIONS				
REV	DESCRIPTION	ECN	BY	DATE
A	RELEASED	J30263	N.T	2/17/93
B	REVISED	J40163	M.N	5/26/94
C	REVISED	V40646	M.K	6/24/94
D	REVISED	V40840	M.K	7/5/94
E	REVISED	J40198	M.K	7/19/94
F	REVISED	V32113	M.K	12/21/94
G	REVISED	J40349	M.K	1/9/95
H	REVISED	N05-0260	M.Z	11/09/05
N				



NOTE

- EJECT PLATE MOVE ALONG INSIDE WALL OF COVER PLATE SMOOTHLY AFTER ASSEMBLING WITH HDR ASSY.
- MATERIAL
 - GUIDE : POLYPHTHARAMID UL94V-0 BLACK
 - PUSH ROD : FLAME RETARDANT UL94V-0 BLACK/BLUE
 - PLATE : STAINLESS
 - EMI CONTACT : PHOSPHOR BRONZE
 - HOLD-DOWN : BRASS
- FINISH
 - EMI CONTACT UNDER PLATING : 2.0μm MIN. Ni CONTACT AREA : 0.5μm MIN. Au
- RECOMMENDED PCB HOLE (OPTIONAL HOLD-DOWN) : 2.3±0.1

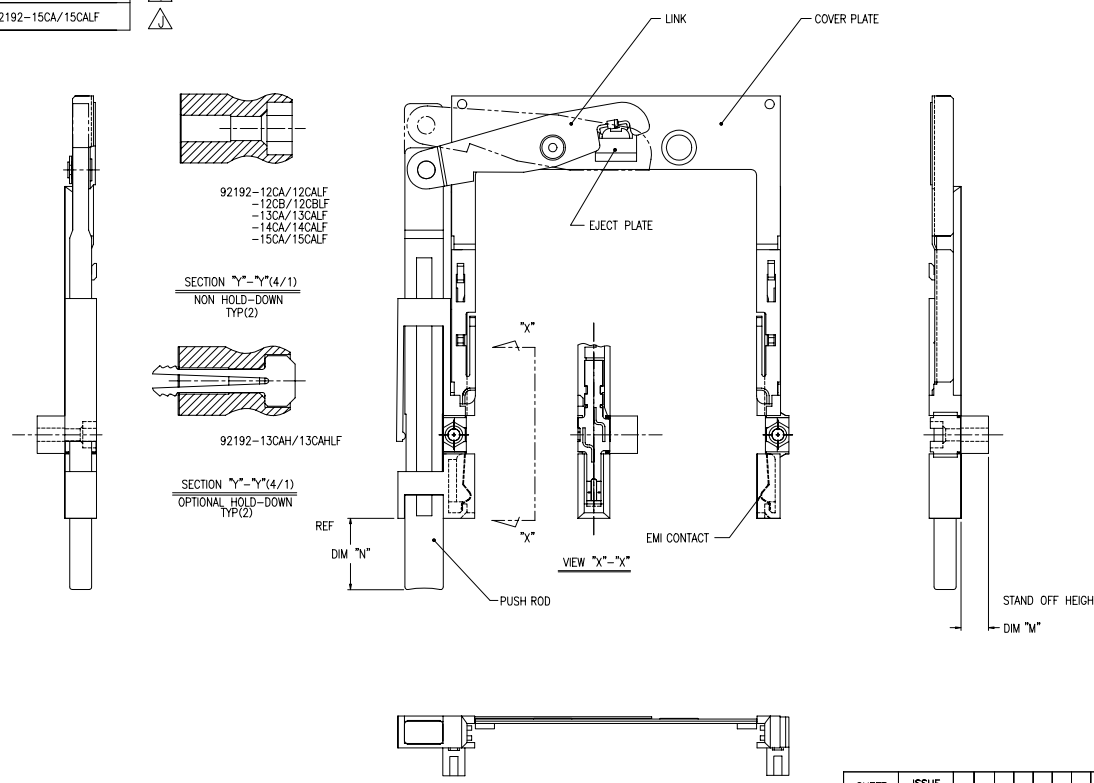
SHEET INDEX	ISSUE SH. NO.	MAT	DR	DATE	CUSTOMER COPY	TITLE
		SEE NOTE ②	J. Omoto	11/11/11		68P EJECTOR HEADER TYPE 1 I/II
LINEAR	TOLERANCES UNLESS OTHERWISE SPECIFIED	FINISH	CHK			MECHANISM ASSY
ANGLES		SEE NOTE ③	M. Koyama	11/11/11		SCALE: 2/1
		APPD				UNIT: MM INCHES
						SIZE: C
						TWG. NO. 92192
						REV: N
						SHEET 4 OF

PDM: Rev:N STATUS: Released Printed: Oct 12, 2010



PRODUCT NO.	
92192-12CAH/12CAHLF	△
92192-12CB/12CBLF	△
92192-12FA/12FALF	△
92192-13CA/13CALF	△
92192-13CAH/12CAHLF	△
92192-14CA/14CALF	△
92192-15CA/15CALF	△

REVISIONS				
REV	DESCRIPTION	ECN	BY	DATE
A	RELEASED	J33263	N.T	2/17/93
B	REVISED	J40163	M.K	5/26/94
C	REVISED	V46840	M.K	7/ 5/94
D	REVISED	J40198	M.K	7/19/94
E	REVISED	V32113	M.K	12/20/94
F	REVISED	J40349	M.K	1/9/95
G	REVISED (ADDED -13CA -13CAH)	J70134	K.S	8/8/97
H	REVISED (ADDED -12FA)	N90076	M.K	7/22/99
J	REVISED (ADDED "LF")	N05-0360	MZ	11/09/05
N				



NOTE
 1. EJECT PLATE MOVE ALONG INSIDE WALL OF COVER PLATE SMOOTHLY AFTER ASSEMBLING WITH HDR ASSY.
 ② MATERIAL
 GUIDE : POLYPHTHARAMID UL94V-0 BLACK
 PUSH ROD : FLAME RETARDANT UL94V-0 BLACK
 PLATE : STAINLESS
 EMI CONTACT : PHOSPHOR BRONZE
 STAND OFF : ZINC ALLOYS DIE CASTING
 ③ FINISH
 EMI CONTACT
 UNDER PLATING : 2.0µm MIN. Ni
 CONTACT AREA : 0.5µm MIN. Au
 STAND OFF : 3~5µm Ni OVER 5~10µm Cu.

DF-003A REV.0
 DO NOT SCALE PRINT THIS INFORMATION IS CONFIDENTIAL AND IS OBSOLETE TO YOU ON CONDITION THAT NO FURTHER DISCLOSURE IS MADE BY YOU TO OTHER THAN FCI PERSONNEL WITHOUT WRITTEN AUTHORIZATION FROM FCI JAPAN K.K.

SHEET INDEX	ISSUE SH NO.	TOLERANCES UNLESS OTHERWISE SPECIFIED	MAT	DATE	CUSTOMER COPY	TITLE
			SEE NOTE ② 3/1 (411)	7/22/99		68P EJECTOR HEADER TYPE I / II / III MECHANISM ASSY
LINEAR			SEE NOTE ③ 3/1 (411)			SCALE: 2/1 C
ANGLES						SIZE: N
						DWG. NO.: 92192
						REV: N
						SHEET 5 OF

