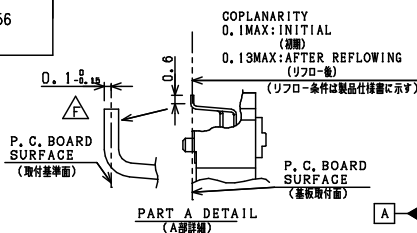
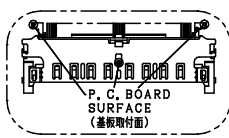
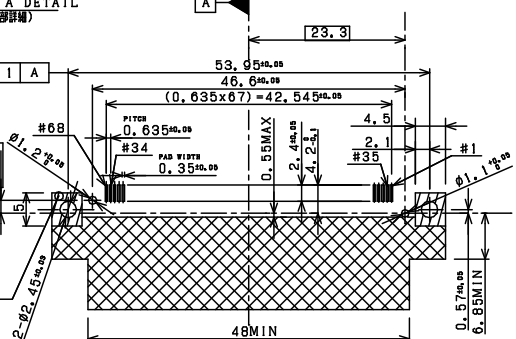
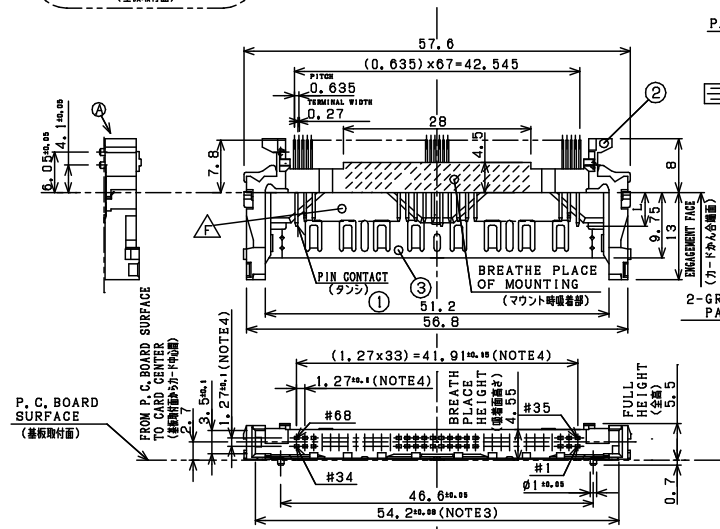


PRODUCT NO.	SOLDERTAIL PLATING	STAND OFF	MOUNT STYLE	PACKAGING SPEC.
62597-00B	Sn-Pb OVER Ni	0 mm	BELOW	GES-14-656
△62597-00BLF	Sn OVER Ni			

REVISIONS				
REV	DESCRIPTION	ECN	BY	DATE
A	RELEASED	J90470	N.T	12/21/99
B	REVISED	J00242	N.T	3/23/00
C	REVISED	J10717	N.T	11/22/01
D	REVISED	J04-0155	N.T	11/1/04
E	REVISED	T05-179	S LIN	08/10/05
F	REVISED	T05-021	S LIN	09/27/05



PIN # (タンシ番号)	LENGTH L(mm) (タンシ長さ)
1, 17, 34, 35, 51, 68	5.00±0.1
36, 67	3.50±0.1
OTHER (上記以外)	4.25±0.1



NO	DESCRIPTION	QTY	MATERIAL	FINISH	REMARKS
③	SHROUD	1	COPPER ALLOY	GOLD OVER NICKEL	
②	HOUSING	1	GLASS FILED LCP		94-V0
①	PIN	68	COPPER ALLOY	CONTACT AREA: GOLD OVER NICKEL SOLDER AREA: Sn OVER NICKEL	

10 以下	±0.3
10 をこえ 100 未満	±0.5
100 以上	±0.8
角 度	±3°

4. SHOW PIN ROOT DIMENSIONS. (タンシ根元寸法を表示.)
 3. SHOW DIMENSIONS WITHIN 10mm OF END OF INSERTED CARD. (カードかん合部より10mm範囲の寸法を表示.)
 2. SEE TABLE 1 FOR PIN CONTACT LENGTH. (タンシ長さは表1に示す.)
 NOTE 1. THIS PRODUCT IS BELOW MOUNT TYPE, STAND OFF 0mm.
 注記 (本品は基板下実装タイプ、スタンドオフ0mm.)

DO NOT SCALE PRINT THIS INFORMATION IS CONFIDENTIAL AND IS DISCLOSED TO YOU ON CONDITION THAT NO FURTHER DISCLOSURE IS MADE BY YOU TO OTHER THAN FCI PERSONNEL WITHOUT WRITTEN AUTHORIZATION FROM FCI JAPAN K.K.
 DF-004A REV F

SHEET INDEX	ISSUE	F	A																	
	SH NO.	1	2																	
TOLERANCES UNLESS OTHERWISE SPECIFIED		MAT		DR	DATE	CUSTOMER COPY	TITLE													
		—H—		STERLING LIN	10/11/05		S/D SMTIL CARDBUS HDR													
				ENGR	10/11/05		BELOW MOUNT													
LINEAR				CHK	10/11/05	THIRD ANGLE PROJ	PRODUCT FAMILY		Header CB SMT IL											CODE
				APPD	10/11/05	UNIT	5A1F													
ANGLES		—H—		H.C LIU	10/11/05	MM	SCALE	SIZE	DWG. NO.	REV	SHEET									
						INCH	—#—	B	62597	F	10F2									



All rights strictly reserved. Reproduction or issue to third parties in any form without written authority from the proprietor.
 Property of FCI. Copyright FCI.

PROD. NO.
 62997-00BPLF

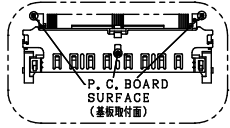
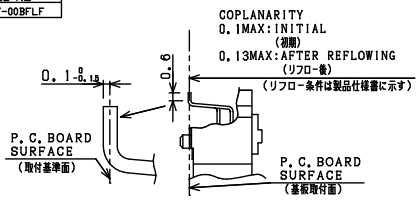
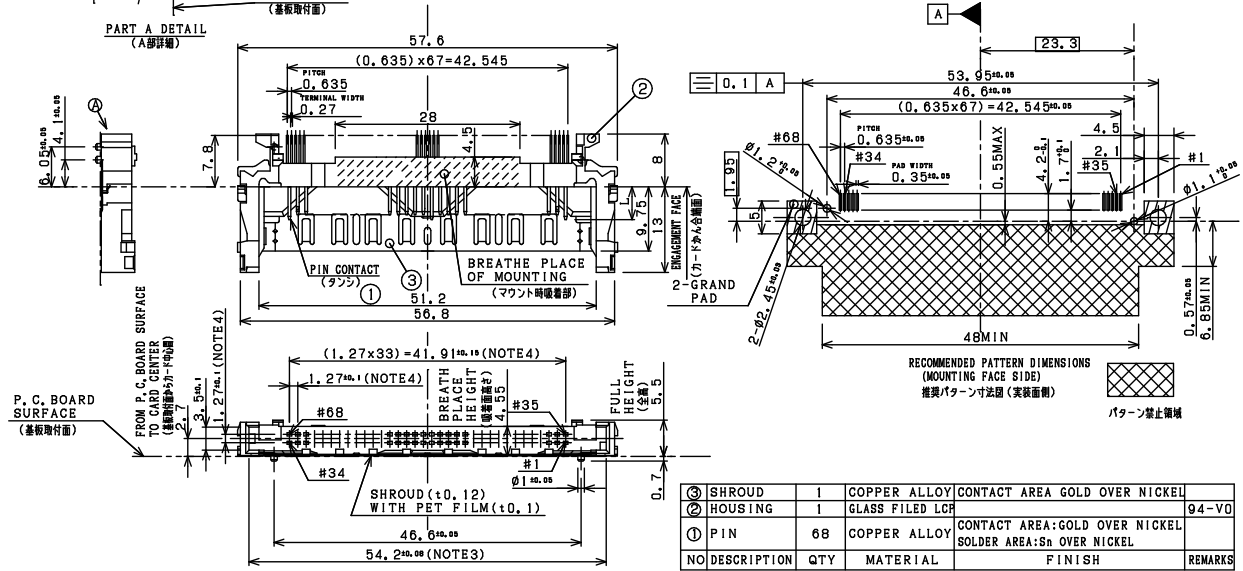


TABLE1 PIN CONTACT LENGTH LIST
(表1 タンシ長さ一覧)

PIN # (タンシ番号)	LENGTH L(mm) (タンシ長)
1, 17, 34, 35, 51, 56	5.00±0.1
36, 67	3.50±0.1
OTHER (上記以外)	4.25±0.1



NO	DESCRIPTION	QTY	MATERIAL	FINISH	REMARKS
③	SHROUD	1	COPPER ALLOY	CONTACT AREA GOLD OVER NICKEL	
②	HOUSING	1	GLASS FILLED LCP		94-V0
①	PIN	68	COPPER ALLOY	CONTACT AREA: GOLD OVER NICKEL SOLDER AREA: Sn OVER NICKEL	

4. SHOW PIN ROOT DIMENSIONS.
 (タンシ根元寸法を表す.)
 3. SHOW DIMENSIONS WITHIN 10mm OF END OF INSERTED CARD.
 (カード挿入部10mm範囲の寸法を表す.)
 2. SEE TABLE1 FOR PIN CONTACT LENGTH.
 (タンシ長さを表す.)
 NOTE 1. THIS PRODUCT IS BELOW MOUNT TYPE, STAND OFF 0mm.
 注記 1. (本品は基板下実装タイプ、スタンドオフ0mm.)

許容差の指定なき寸法公差

10以下	±0.3
10をこえ100未満	±0.5
100以上	±0.8
角 度	±3°

mat'l. code		tolerances unless otherwise specified		CUSTOMER COPY	
lir	ecn no	dr	date	projection	title
A	T05-179	S. Lin	8/10/05	MM	S/D SMTIL CARBUS HDR BELOW MOUNT
		linear		scale	product family Header CB SMT
		angles		N/A	size dwg no
		dr	Sterling Lin 8/10/05		62597
		enrg	Sterling Lin 8/10/05		sheet
		chr	Minerva Wang 8/10/05		2 of 2
		opdr	HC LIQU 8/10/05		
sheet index	revision sheet	E	A	cage code	
	1 2			22526	