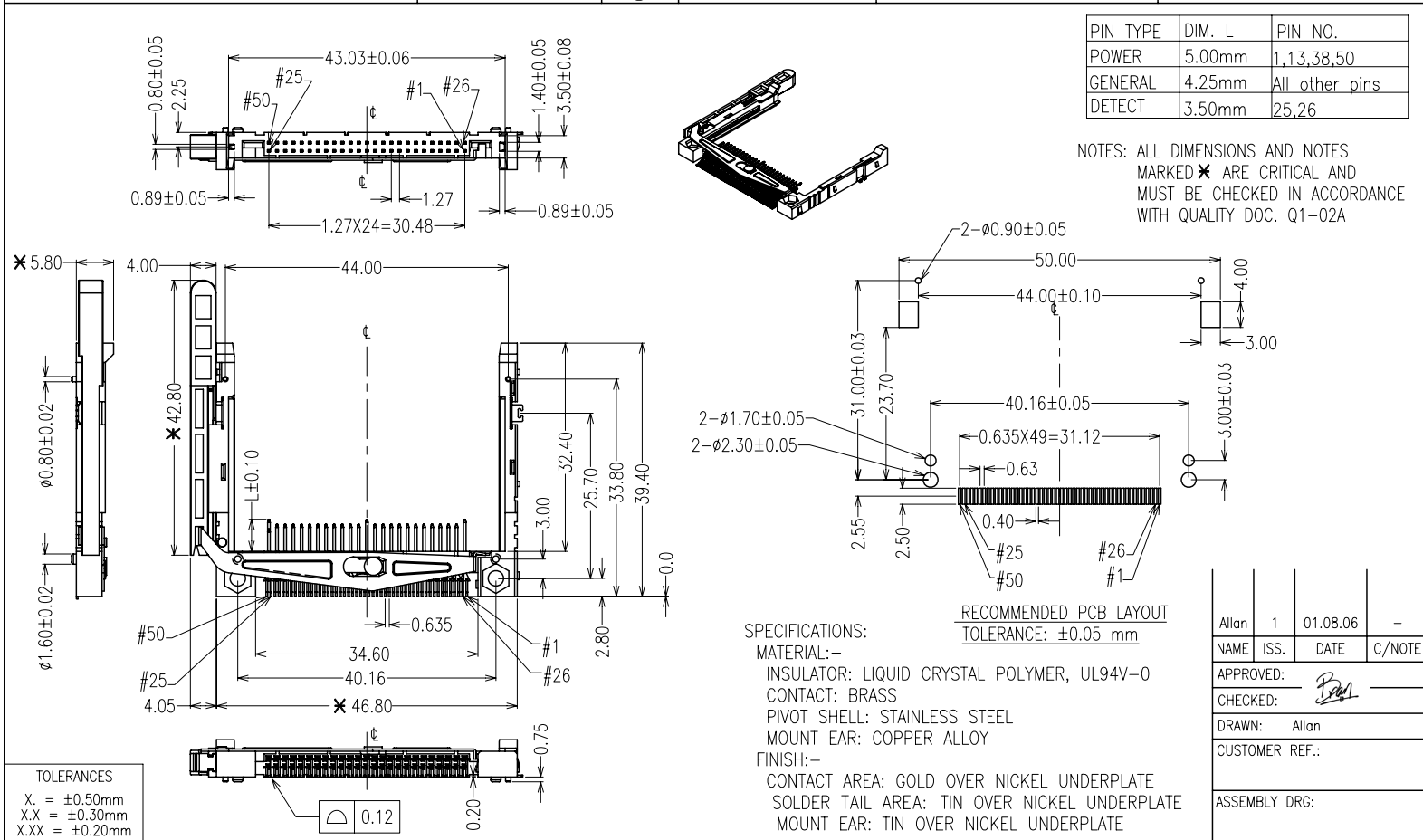


DRAWING No.: M504-7805042	IF IN DOUBT - ASK	©	NOT TO SCALE	THIRD ANGLE PROJECTION	ALL DIMENSIONS IN mm
---------------------------	-------------------	---	--------------	------------------------	----------------------



<div>HARWIN</div>			<div>THIS DRAWING AND ANY INFORMATION OR DESCRIPTIVE MATTER SET OUT HEREON ARE CONFIDENTIAL AND COPYRIGHT PROPERTY OF THE HARWIN GROUP AND MUST NOT BE DISCLOSED, LOANED, COPIED OR USED FOR MANUFACTURING, TENDERING OR FOR ANY OTHER PURPOSE WITHOUT THEIR WRITTEN PERMISSION.</div>		<div>TOLERANCES</div> <div>X. = ±1mm X.X = ±0.25mm X.XX = ±0.10mm X.XXX = ±0.01mm</div> <div>ANGLES = ±5° UNLESS STATED</div>		<div>MATERIAL:</div> <div>SEE NOTES</div> <div>FINISH:</div> <div>SEE NOTES</div> <div>S/AREA:</div> <div>mm<sup>2</sup></div>		<div>TITLE:</div> <div>CF2 W/EJECTOR CONNECTOR STANDARD</div> <div>DRAWING NUMBER:</div> <div>M504-7805042</div>		<div>SHT</div> <div>1</div> <div>OF</div> <div>1</div>		
<div>HARWIN USA</div> <div>TEL: 603 893 5376</div> <div>FAX: 603 893 5396</div> <div>mis@harwin.com</div>		<div>HARWIN Europe (UK)</div> <div>TEL: 023 9231 4545</div> <div>FAX: 023 9231 4590</div> <div>mis@harwin.co.uk</div>		<div>HARWIN Asia</div> <div>TEL: +65 6 779 4909</div> <div>FAX: +65 6 779 3868</div> <div>mis@harwin.com.sg</div>									