

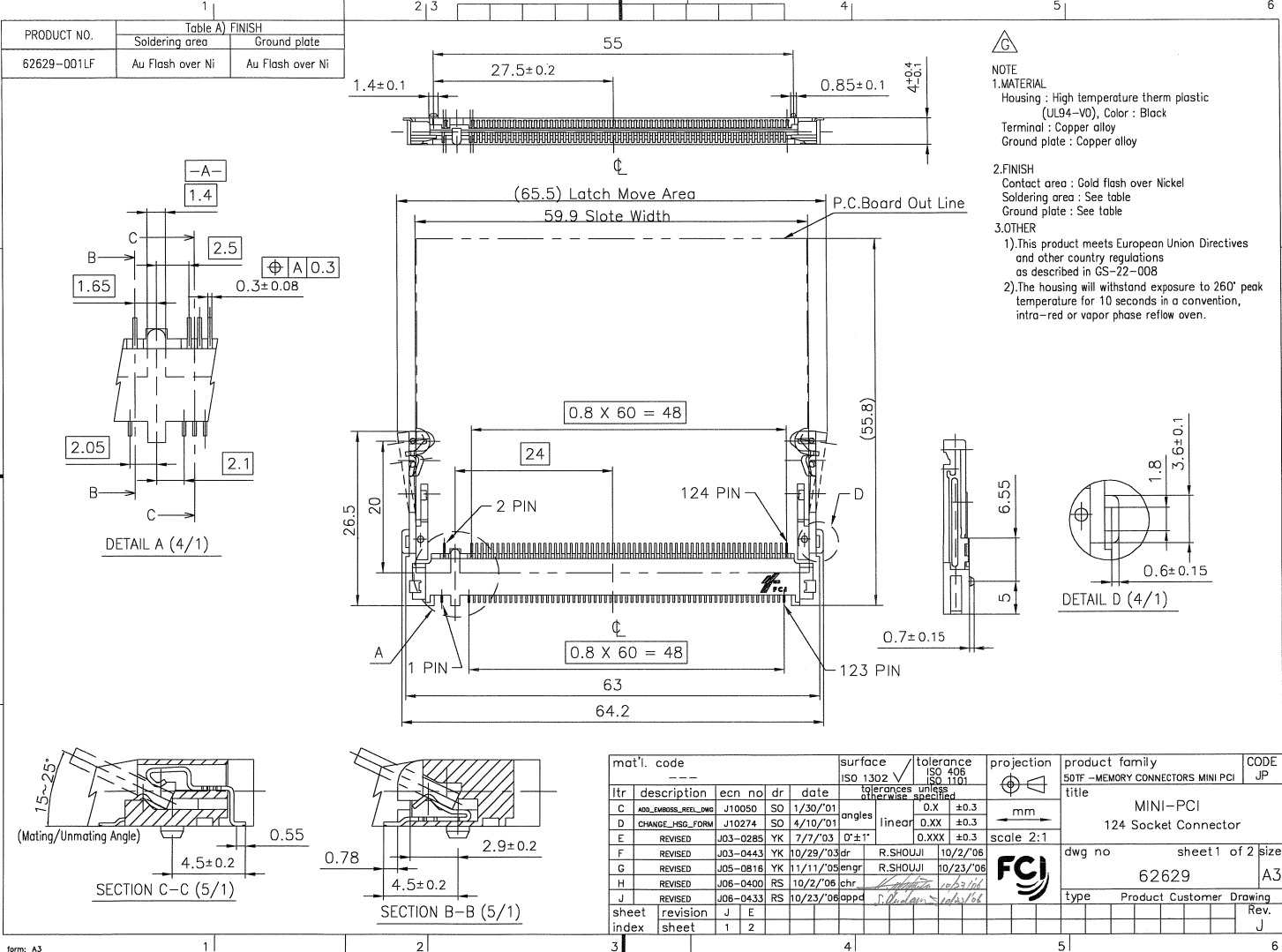
FCI CONFIDENTIAL

FCI

This document is the property of and embodies CONFIDENTIAL and PROPRIETARY information of FCI. No part of the information shown herein may be reproduced, stored in a retrieval system, or transmitted in any form or by any means, electronic, mechanical, photocopying, recording, or otherwise, without the written consent of FCI. Copyright FCI.

FCI

FCI



**NOTE**

**1. MATERIAL**  
 Housing : High temperature therm plastic (UL94-V0), Color : Black  
 Terminal : Copper alloy  
 Ground plate : Copper alloy

**2. FINISH**  
 Contact area : Gold flash over Nickel  
 Soldering area : See table  
 Ground plate : See table

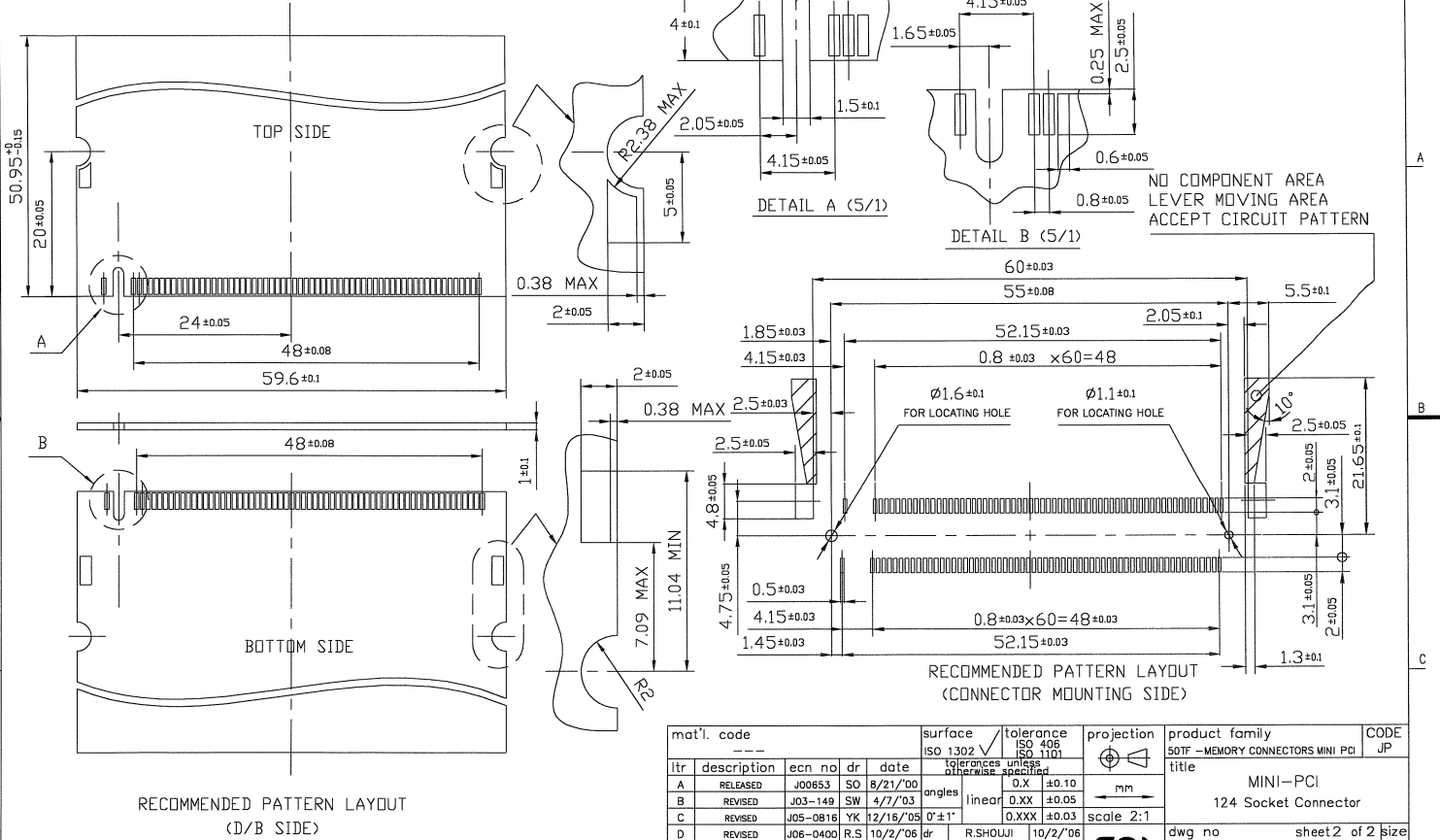
**3. OTHER**  
 1) This product meets European Union Directives and other country regulations as described in GS-22-008  
 2) The housing will withstand exposure to 260° peak temperature for 10 seconds in a convection, infra-red or vapor phase reflow oven.

FCI CONFIDENTIAL

FCI  
Fciconnect.com

This document is the property of and embodies CONFIDENTIAL and PROPRIETARY information of FCI. No part of the information shown here may be reproduced, stored in a retrieval system, or transmitted in any form or by any means, electronic, mechanical, photocopying, recording, or otherwise, without the written consent of FCI. Copyright FCI.

PRODUCT NO.  
62629-001LF



RECOMMENDED PATTERN LAYOUT (D/B SIDE)

RECOMMENDED PATTERN LAYOUT (CONNECTOR MOUNTING SIDE)

| mat'l. code |             | surface        |     | tolerance |                                       | projection |          | product family                    |                                   | CODE                     |  |
|-------------|-------------|----------------|-----|-----------|---------------------------------------|------------|----------|-----------------------------------|-----------------------------------|--------------------------|--|
| ---         |             | ISO 1302       |     | ISO 406   |                                       | ISO 1101   |          | 50TF - MEMORY CONNECTORS MINI PCI |                                   | JP                       |  |
| ltr         | description | ecn no         | dr  | date      | tolerances unless otherwise specified |            | mm       |                                   | title                             |                          |  |
| A           | RELEASED    | J00653         | SO  | 8/21/00   | angles                                | linear     | 0.X      | ±0.10                             | MINI-PCI                          |                          |  |
| B           | REVISED     | J03-149        | SW  | 4/7/03    |                                       |            | 0.XX     | ±0.05                             | 124 Socket Connector              |                          |  |
| C           | REVISED     | J05-0816       | YK  | 12/16/05  | 0'±1"                                 |            | 0.XXX    | ±0.03                             | scale 2:1                         |                          |  |
| D           | REVISED     | J06-0400       | R.S | 10/2/06   | dr                                    | R.SHOUJI   | 10/2/06  |                                   | FCI                               |                          |  |
| E           | REVISED     | J06-0433       | R.S | 10/23/06  | enr                                   | R.SHOUJI   | 10/23/06 |                                   | dwg no 62629 sheet 2 of 2 size A3 |                          |  |
| sheet index |             | revision sheet |     | chr       |                                       | appd       |          | type                              |                                   | Product Customer Drawing |  |
| 1           |             | 1              |     | 10/2/06   |                                       | 10/23/06   |          | Rev. E                            |                                   | Rev. E                   |  |

form: A3