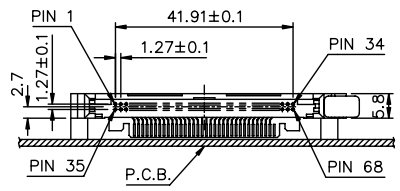
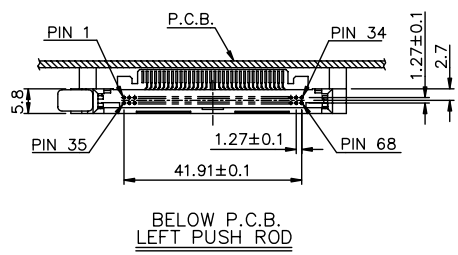
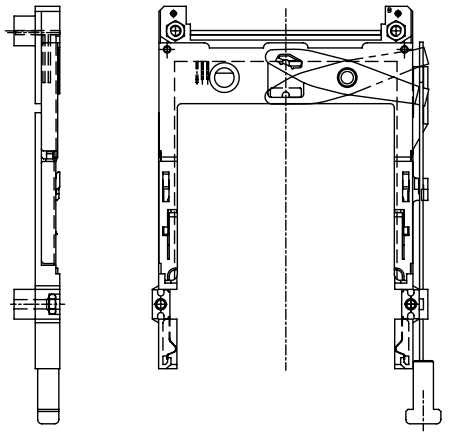
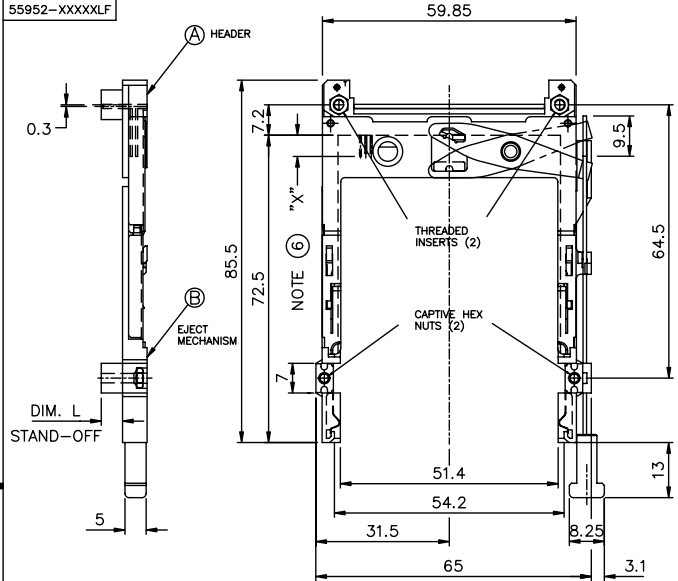


Tous droits strictement réservés. Reproduction ou communication à des tiers interdite sous quelque forme que ce soit sans autorisation écrite du propriétaire. Propriété de FCI. Droits de reproduction FCI.

All rights strictly reserved. Reproduction or issue to third parties in any form whatever is not permitted without written authority from the proprietor. Property of FCI. Copyright FCI.

PRODUCT NO.
55952-XXXXX
55952-XXXXXLF



ABOVE P.C.B.
RIGHT PUSH ROD

BELOW P.C.B.
LEFT PUSH ROD

mat'l. code		tolerances unless otherwise specified		CUSTOMER COPY		A FCI www.fciconnect.com	
ltr	ecr no	dr	date	linear	.X±.3	projection	title
A	V01768	RJR	8/22/00		.XX±.13		EJECTOR HEADER ASS'Y
B	V03-0512	WL	05/29/03		.XXX±.051		3.3V, SMT TYPE 1/2/3
C	T03-0540	WL	12/05/03	angles	0° ±2°	product family	PCMCIA
D	N05-135	WB	05/27/05	dr	R. RINEHART 8/22/00	size	dwg no
				enrg	D. BRANN 8/22/00	scale	55952
				chr	D. BRANN 8/22/00	1:1	A4
				appd	D. BRANN 8/22/00		
sheet	revision	C	C	D	B	cage code	4
index	sheet	1	2	3	4	STATUS	Released

ACAD

PDM: Rev:D

STATUS: Released

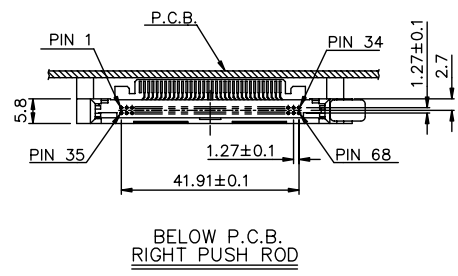
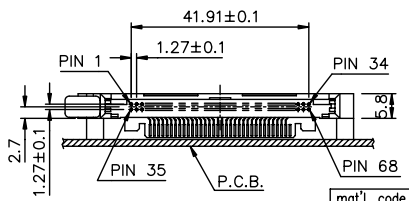
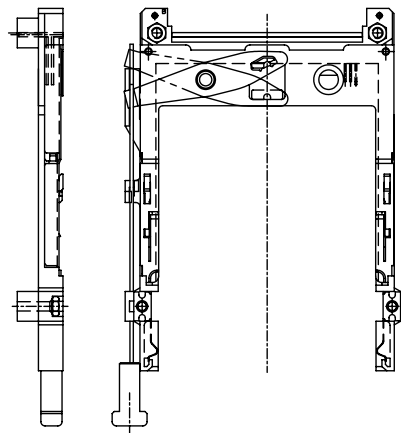
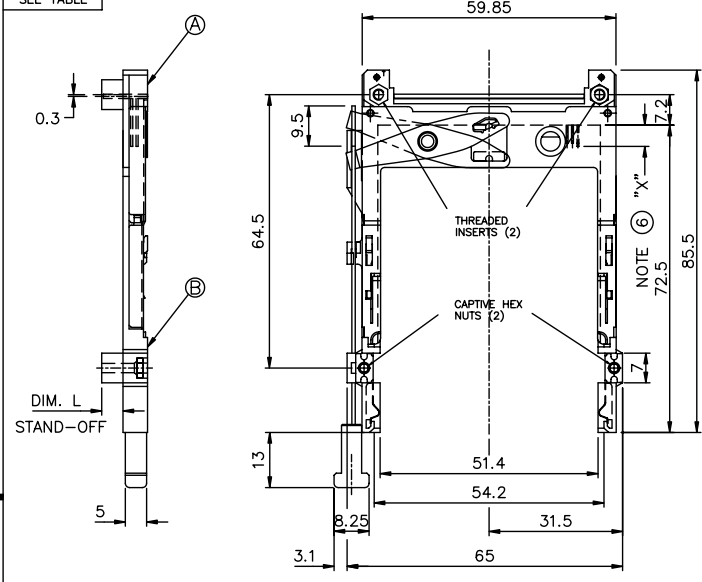
Printed: Oct 12, 2010

Tous droits strictement réservés. Reproduction ou communication à des tiers interdite sous quelque forme que ce soit sans autorisation écrite du propriétaire. Propriété de FCI. Droits de reproduction FCI.

All rights strictly reserved. Reproduction or issue to third parties in any form whatever is not permitted without written authority from the proprietor. Property of FCI. Copyright FCI.



PRODUCT NO.
SEE TABLE



mat'l. code		tolerances unless otherwise specified		CUSTOMER COPY	www.fcconnect.com
ltr	ecr no	dr	date	linear	
c				.X±.3	
				.XX±.13	title
				.XXX±.051	EJECTOR HEADER ASS'Y
				angles	3.3V, SMT TYPE 1/2/3
				0° ±2°	product family
		dr	R. RINEHART 8/22/00	← MM	PCMCIA
		enrg	D. BRANN 8/22/00	scale	size
		chr	D. BRANN 8/22/00	1:1	dwg no
		appd	D. BRANN 8/22/00		A4 55952
sheet	revision				code
index	sheet				2 of 4

ACAD

PDM: Rev:D

STATUS: Released

Printed: Oct 12, 2010

PRODUCT NO.
SEE TABLE

P.C.B. SIDE	PUSH ROD LOCATION	DIM. L	PRODUCT NO.	HDR & PWB ASS'Y	EJ ASS'Y	INSERT(2 pcs)
BELOW	LEFT	5	55952-650CALF	10003528-5050LF	95627-05CA	93260-005
		4.3	55952-640CALF	10003528-5043LF	95627-043CA	93260-013
		2.2	55952-620CALF	10003528-5022LF	95627-022CA	93260-011
	RIGHT	5	55952-550CALF	10003528-5050LF	95627-15CA	93260-005
		4.3	55952-540CALF	10003528-5043LF	95627-143CA	93260-013
		2.2	55952-520CALF	10003528-5022LF	95627-122CA	93260-011
ABOVE	LEFT	5	55952-150CALF	10003528-0050LF	95627-15CA	93260-005
		4.3	55952-140CALF	10003528-0043LF	95627-143CA	93260-013
		2.2	55952-120CALF	10003528-0022LF	95627-122CA	93260-011
	RIGHT	5	55952-050CALF	10003528-0050LF	95627-05CA	93260-005
		4.3	55952-040CALF	10003528-0043LF	95627-043CA	93260-013
		2.2	55952-020CALF	10003528-0022LF	95627-022CA	93260-011
BELOW	LEFT	5	55952-650CA	10003528-5050	95627-05CA	93260-005
		4.3	55952-640CA	10003528-5043	95627-043CA	93260-013
		2.2	55952-620CA	10003528-5022	95627-022CA	93260-011
	RIGHT	5	55952-550CA	10003528-5050	95627-15CA	93260-005
		4.3	55952-540CA	10003528-5043	95627-143CA	93260-013
		2.2	55952-520CA	10003528-5022	95627-122CA	93260-011
ABOVE	LEFT	5	55952-150CA	10003528-0050	95627-15CA	93260-005
		4.3	55952-140CA	10003528-0043	95627-143CA	93260-013
		2.2	55952-120CA	10003528-0022	95627-122CA	93260-011
	RIGHT	5	55952-050CA	10003528-0050	95627-05CA	93260-005
		4.3	55952-040CA	10003528-0043	95627-043CA	93260-013
		2.2	55952-020CA	10003528-0022	95627-022CA	93260-011

NOTES:

- 8mm MIN. CARD EJECT.
- EJECT TRAVEL: 9.5mm
- PUSH ROD LOCATION AND P.C.B. SIDE ARE AS APPEARS INSTALLED.

4. MATERIAL

4.1 PART (A) (HEADER ASS'Y)

PLASTIC : HOUSING ...LCP UL94V-0
 PIN : PHOSPHOR BRONZE
 PCB : FR4

4.2 PART (B) (EJECT MECHANISM ASS'Y)

PLASTIC : GUIDE: POLYPHTHARAMID UL94V-0 BLACK
 : PUSH ROD CAP: POLYPHTHARAMID UL94V-0 BLACK
 PLATE AND PUSH ROD : STAINLESS
 EMI CONTACT: PHOSPHOR BRONZE

5. FINISH (PIN)

UNDER PLATING : 0.5µm Ni
 CONTACT AREA : 0.1µm GOLD OVER
 : 0.5µm Pd-Ni
 SOLDER TAIL : 2.5µm Sn-Pb
 : 2.5µm PURE Sn(-*****LF)

(6) DIM "X"

4.25±0.1	3.5±0.1	5.0±0.1
OTHERS	36,67	1,17,34,35,51,68

7. RECOMMENDED MATING CONNECTOR

P/N 91931-31169

8. RECOMMENDED SCREW TORQUE:

1.0 TO 1.5 MAX in-lbs (1.2-1.7 cm-kgs)


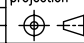
9. IF LEAD FREE P.N.THE HOUSING WILL WITHSTAND EXPOSURE TO

260°C PEAK TEMPERATURE FOR 10 SECONDS IN A WAVE SOLDER APPLICATION WITH A 1.00MM MINIMUM THICK CIRCUIT BOARD.

10. IF LEAD FREE P/N.THE PRODUCT MEETS EUROPEAN UNION DIRECTIVES

AND OTHER COUNTRY REGULATIONS AS DESCRIBED IN GS-22-008

11. LEAD FREE P/N PACKAGING MEETS GS-14-920 SPECIFICATION

mat'l. code				tolerances unless otherwise specified		CUSTOMER COPY		 www.fciconnect.com	
ltr	ecn no	dr	date	linear	.X±.3	projection	title	EJECTOR HEADER ASS'Y	
d					.XX±.13		3.3V, SMT TYPE 1/2/3		
				angles	.XXX±.051			product family PCMCIA code	
				dr	0° ±2'	MM	size	dwg no	
				enrg	R. RINEHART 8/22/00	1:1	A4	55952	
				chr	D. BRANN 8/22/00			sheet 3 of 4	
				appd	D. BRANN 8/22/00				
sheet index	revision sheet							cage code	

Tous droits strictement reserves. Reproduction ou communication a des tiers interdite sous quelque forme que ce soit sans autorisation écrite du propriétaire. Propriete de c FCI. Droits de reproduction FCI.

All rights strictly reserved. Reproduction or issue to third parties in any form whatever is not permitted without written authority from the proprietor. Property of FCI. Copyright FCI.

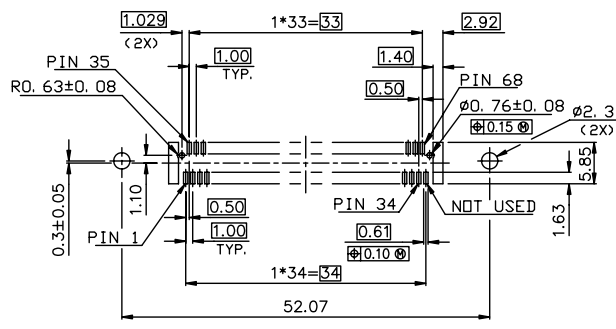


Tous droits strictement réservés. Reproduction ou communication à des tiers interdite sous quelque forme que ce soit sans autorisation écrite du propriétaire. Propriété de c FCI. Droits de reproduction FCI.

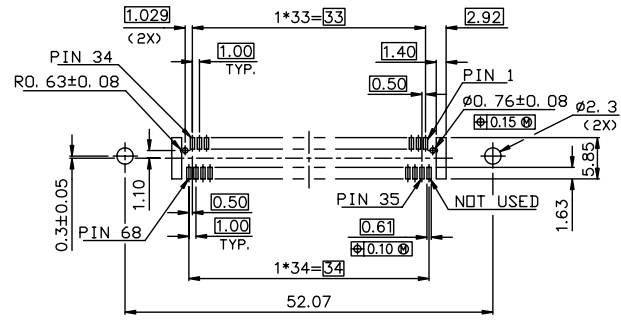
All rights strictly reserved. Reproduction or issue to third parties in any form whatever is not permitted without written authority from the proprietor. Property of FCI. Copyright FCI.

1 | 2
FOR P/N: 55952-0**CA/0**CALF/1**CA/1**CALF

3 | 4
FOR P/N: 55952-5**CA/5**CALF/6**CA/6**CALF



RECOMMENDED PCB LAYOUT ABOVE PCB MOUNT



RECOMMENDED PCB LAYOUT BELOW PCB MOUNT

mat'l. code		tolerances unless otherwise specified		CUSTOMER COPY		Electronics www.fciconnect.com	
ltr	ecn no	dr	date	linear	.XX±.13		title EJECTOR HEADER ASS'Y 3.3V, SMT TYPE 1/2/3
B				angles	.XXX±.051 0° ±2'		
				dr	R. RINEHART 8/22/00	MM	PCMCIA
				engr	D. BRANN 8/22/00	scale	size
				chr	D. BRANN 8/22/00	1:1	dwg no
				appd	D. BRANN 8/22/00	A4	55952
sheet	revision						code
index	sheet						26

1 | 2

3 |

4

ACAD

PDM: Rev:D

STATUS Released 26 Printed: Oct 12, 2014