

4

3

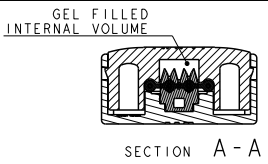
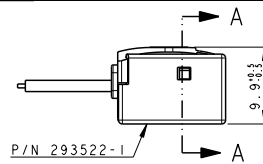
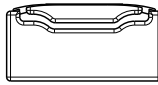
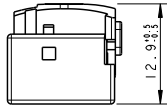
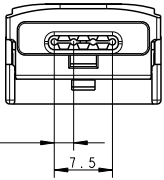
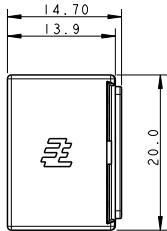
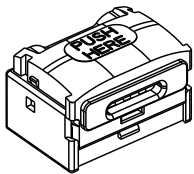
2

1

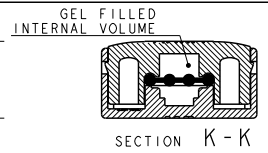
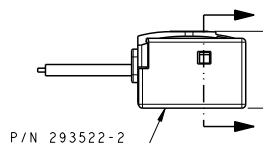
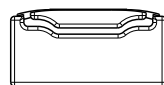
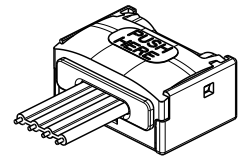
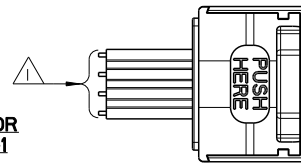
THIS DRAWING IS UNPUBLISHED. RELEASED FOR PUBLICATION 2009  
 COPYRIGHT 2009 BY TYCO ELECTRONICS CORPORATION. ALL INTERNATIONAL RIGHTS RESERVED.

LOC	DIST	REVISIONS			
P	LTR	DESCRIPTION	DATE	DWN	APVD
A		REVISED PER ECR-10-014988	27JUL2010	HMR	PP

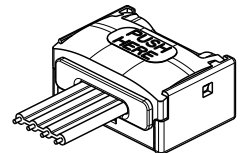
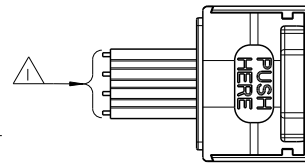
PART NUMBER	BRIDGE	COLOR
0-293522-1	YES	TRANSP LIGHT BLUE
5-293522-1	YES	TRANSP LIGHT BLUE
0-293522-2	NO	TRANSP LIGHT GREEN
5-293522-2	NO	TRANSP LIGHT GREEN



APPLICATION FOR  
P/N X-293522-1



APPLICATION FOR  
P/N X-293522-2



- 1 RIBBON CABLE, 4 WIRES  
PITCH 2.50±0.10mm, MAX WIDTH: 8.7mm  
AWG26/7 (FUSED TINNED STRANDS)  
OR AWG24/7 (FUSED AND NON FUSED TINNED STRANDS);  
INSULATION MATERIAL: PVC.
- 2 CONNECTOR TERMINATIONS ACHIEVED BY ALLIGATOR PLIERS.  
APPLICATION ACCORDING TE APPLICATION SPEC 114-19131

<small>THIS DRAWING IS A CONTROLLED DOCUMENT FOR TYCO ELECTRONICS CORPORATION IT IS SUBJECT TO CHANGE AND THE CONTROLLING ENGINEERING ORGANIZATION SHOULD BE CONTACTED FOR THE LATEST REVISION.</small>		DWN Erik Derks 29APR2009 CHK Erik Derks 29APR2009 APVD GTU 22jun09	<b>Tyco Electronics</b> Tyco Electronics AMP Italia S.r.l. C.so F.lli Cervi, 15 - Collegno (TO)
DIMENSIONS: mm 	TOLERANCES UNLESS OTHERWISE SPECIFIED: 0 PLC ±0.5 1 PLC ±0.3 2 PLC ±0.1 3 PLC ± 4 PLC ± ANGLES ±	NAME <b>4 POS. SEALED CONNECTOR FOR LED LIGHTING APPLICATION</b>	RESTRICTED TO
MATERIAL PC UNFILLED TRANSPARENT COLOURS ACC. TO UL94-V0 (3mm)	FINISH	SIZE CAGE CODE DRAWING NO <b>A300779C-293522</b>	WEIGHT -
CUSTOMER DRAWING		SCALE 2:1	SHEET 1 OF 1 REV A

1470-19 (2/09)