

## P Series Through Hole PLCC Socket

**Features** 

- Applications Include All Electronic PC Boards Requiring the Conversion of a .050" Pitch Chip Carrier to a .100" x .100" Grid Through Board Application
- Accepts Molded Plastic Chip Carriers Conforming to JEDEC Specification MO-047 for Square and MO-052 for Rectangular Configuration
- Visual and Mechanical Polarization for PLCC Insertion
- Closed Bottom for Excellent Protection from Solder Wicking Into Contact Area
- Molded-In Stand-Offs Allow Easy Removal of Flux Residue
- Extraction Tool Slots\*
- Open Top Design for Cooler Running Chip Carrier
- Automatic Insertion Machine Compatible
- CSA/NRTL Certified File No. LR78160

### Performance Specifications

#### Materials and Finish

##### Body

LCC: PBT Thermoplastic, 30% Glass Filled,   
UL94V-0 Rated, Black Color

LCC-1: PPS Thermoplastic, 40% Glass Filled,  
UL94V-0 Rated, Brown Color

##### Contact Material

Phosphor Bronze

##### Contact Finish

Copper Alloy, Tin Plated

### Electrical Characteristics

**Contact Current Rating:** 1 Amp

**Contact Resistance:** 30 Milliohms Max.

**Dielectric Withstanding Voltage:** 500V AC Min. for 1 Minute

**Insulation Resistance:** 1000 Megohms Min.

**Temperature Rating:** -55°C to +105°C

\* PLCC Extraction Tool P/N TLP-PLCC

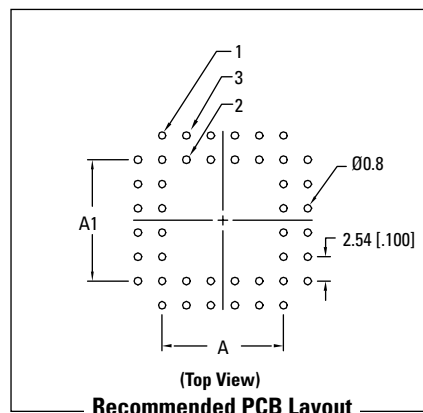
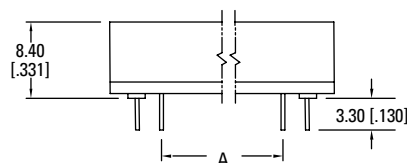
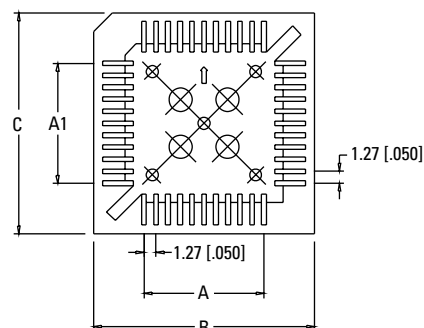
## CHIP CARRIER SOCKETS

### P Series

### Ordering Information

P	—	44	LCC
Series		Number of Contacts	LCC: PBT LCC-1: PPS

### Dimensions



Dimensions in mm [In]

Number of Contacts	A ±0.1	A1 ±0.1	B ±0.2	C ±0.2
20	5.08	5.08	15.56	15.56
28	7.62	7.62	17.78	17.78
32	7.62	10.16	18.10	20.64
44	12.70	12.70	23.58	23.58
52	15.24	15.24	25.72	25.72
68 - PBT	20.32	20.32	31.80	31.80
68 - PPS	20.32	20.32	31.10	31.10
84 - PBT	25.40	25.40	36.70	36.70
84 - PPS	25.40	25.40	36.00	36.00