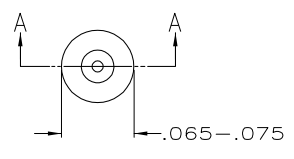
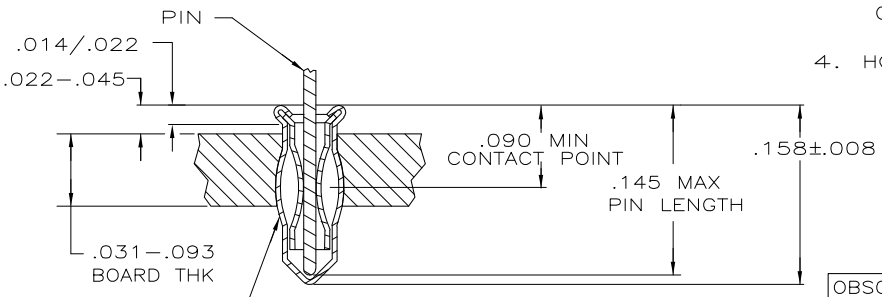


THIS DRAWING IS UNPUBLISHED. RELEASED FOR PUBLICATION .19 .
 © COPYRIGHT 19 BY AMP INCORPORATED. ALL RIGHTS RESERVED.

LOC	DIST	REVISIONS					
AG	53	P	LTR	DESCRIPTION	DATE	DWN	APVD
		12		REVISED PER ECO-06-018765	13APR07	DH	DB



- MATERIAL:
 EYELET - COPPER (QQ-C-576)
 SPRING - BERYLLIUM COPPER (QQ-C-533)
- PLATING:
 TIN (MIL-T-10727) .000150 MIN THK
 GOLD (MIL-G-45204) .000030 MIN THK OVER NICKEL
 (QQ-N-290) .000011 MIN THK ON CONTACT AREA.
- TO INSURE 1/2 OZ MIN RETENTION DO NOT EXCEED .004 DIFFERENCE IN PIN DIA WHEN CHANGING TO A SMALLER DIA PIN
- HOLE SIZE FOR HAND INSERTION .053-.055



INSERTION MACHINE CAPABLE OF OVALIZING SOCKET FOR RETENTION IN PC BOARD WITH .052±.003 DIA HOLE PRIOR TO SOLDERING OPERATION

SECTION A-A

OBSOLETE	.090/.145	.014/.022	GOLD	TIN	645951-5
			TIN		645951-4
OBSOLETE		.020/.026	GOLD	TIN	645951-2
			TIN		645951-1
	LENGTH	DIA	SPRING	EYELET	PART NO
	PIN		FINISH		
	NO. 2 SERIES SHORT				

THIS DRAWING IS A CONTROLLED DOCUMENT.

DIMENSIONS: INCHES	TOLERANCES UNLESS OTHERWISE SPECIFIED:	DWN M. BOWERS 12-10-82	AMP Incorporated Harrisburg, PA 17105-3608		
0 PLC ±-	1 PLC ±-	CHK P. MUTZABAUGH 6-10-85			
2 PLC ±-	3 PLC ±-	APVD G.D. MILLER 6-10-85			
4 PLC ±-	ANGLES ±-	NAME			
MATERIAL -	FINISH -	PRODUCT SPEC			
		APPLICATION SPEC	MINIATURE SPRING SOCKET ASSEMBLY		
		WEIGHT -	SIZE A3	CAGE CODE 00779	DRAWING NO 645951
		CUSTOMER DRAWING	RESTRICTED TO		
			SCALE NTS	SHEET 1 OF 1	REV 1

AMP 1470-19 REV 11JUN97 Translated 070209.135414 (YMMDDJHMMSS) from Computervision, Inc., Medusa Revision 12.2.51